

Product datasheet

Anti-PPP1A antibody [4G3] ab66955

画像数 1

製品の概要

製品名	Anti-PPP1A antibody [4G3]
製品の詳細	Mouse monoclonal [4G3] to PPP1A
アプリケーション	適用あり: WB, ELISA
種交差性	交差種: Human
免疫原	Recombinant fragment, corresponding to amino acids 30-299 of Human PPP1A, purified from E. coli.
ポジティブ・コントロール	HepG2 cell lysate.
特記事項	This antibody was derived from the hybridization of mouse FO myeloma cells with spleen cells from BALB/c mice.

製品の特性

製品の状態	Liquid
保存方法	Shipped at 4°C. Upon delivery aliquot and store at -20°C or -80°C. Avoid repeated freeze / thaw cycles.
バッファー	Preservative: 0.1% Sodium Azide Constituents: PBS, pH 7.4
精製度	Protein G purified
一次抗体 備考	This antibody was derived from the hybridization of mouse FO myeloma cells with spleen cells from BALB/c mice.
ポリ/モノ	モノクローナル
クローン名	4G3
アイソタイプ	IgG2a
軽鎖の種類	kappa

アプリケーション

Our [Abpromise guarantee](#) covers the use of **ab66955** in the following tested applications.

The application notes include recommended starting dilutions; optimal dilutions/concentrations should be determined by the end user.

アプリケーション	Abreviews	特記事項
WB		1/500 - 1/2000. Detects a band of approximately 38 kDa (predicted molecular weight: 38 kDa). Blocking: 5% skim milk in PBS-Tween, for 1hr at room temperature. Incubate overnight.
ELISA		Use at an assay dependent concentration.

ターゲット情報

機能

Protein phosphatase 1 (PP1) is essential for cell division, and participates in the regulation of glycogen metabolism, muscle contractility and protein synthesis. Involved in regulation of ionic conductances and long-term synaptic plasticity. May play an important role in dephosphorylating substrates such as the postsynaptic density-associated Ca(2+)/calmodulin dependent protein kinase II. Component of the PTW/PP1 phosphatase complex, which plays a role in the control of chromatin structure and cell cycle progression during the transition from mitosis into interphase.

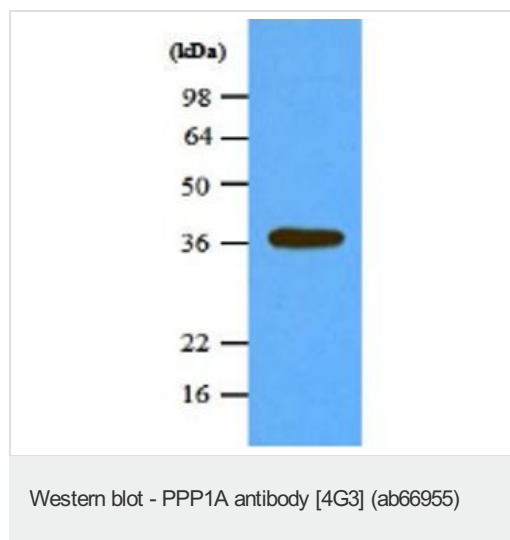
配列類似性

Belongs to the PPP phosphatase family. PP-1 subfamily.

細胞内局在

Cytoplasm. Nucleus. Nucleus > nucleoplasm. Nucleus > nucleolus. Primarily nuclear and largely excluded from the nucleolus. Highly mobile in cells and can be relocalized through interaction with targeting subunits. NOM1 plays a role in targeting this protein to the nucleolus. In the presence of PPP1R8 relocalizes from the nucleus to nuclear speckles.

画像



Anti-PPP1A antibody [4G3] (ab66955) at
1/1000 dilution + HepG2 cell lysate at 45 µg

Secondary

goat anti-mouse
Developed using the ECL technique

Predicted band size : 38 kDa

Observed band size : 38 kDa

Please note: All products are "FOR RESEARCH USE ONLY AND ARE NOT INTENDED FOR DIAGNOSTIC OR THERAPEUTIC USE"

Our Promise to you: Quality guaranteed and expert technical support

- Replacement or refund for products not performing as stated on the datasheet
- Valid for 12 months from date of delivery
- Response to your inquiry within 24 hours

- We provide support in Chinese, English, French, German, Japanese and Spanish
- Extensive multi-media technical resources to help you
- We investigate all quality concerns to ensure our products perform to the highest standards

If the product does not perform as described on this datasheet, we will offer a refund or replacement. For full details of the Abpromise, please visit <http://www.abcam.co.jp/abpromise> or contact our technical team.

Terms and conditions

- Guarantee only valid for products bought direct from Abcam or one of our authorized distributors