

Product datasheet

Anti-PPM1G antibody ab84503

画像数 2

製品の概要

製品名	Anti-PPM1G antibody
製品の詳細	Rabbit polyclonal to PPM1G
アプリケーション	適用あり: IHC-P
種交差性	交差種: Mouse, Human 交差が予測される動物種: Rabbit, Horse, Chicken, Guinea pig, Cow, Dog, Turkey, Pig, Xenopus laevis, Chimpanzee, Rhesus monkey, Gorilla, Orangutan, Xenopus tropicalis, Platypus ▲
免疫原	Synthetic peptide corresponding to a region between residues 400 and 450 of human PPM1G (NP_817092.1).
ポジティブ・コントロール	Human breast adenocarcinoma; mouse squamous cell carcinoma.

製品の特性

製品の状態	Liquid
保存方法	Shipped at 4°C. Upon delivery aliquot and store at -20°C. Avoid freeze / thaw cycles.
バッファー	Preservative: 0.09% Sodium Azide Constituents: 0.1% BSA, Tris buffered saline
精製度	Immunogen affinity purified
特記事項 (精製)	ab84503 was affinity purified using an epitope specific to PPM1G immobilized on solid support.
ポリ/モノ	ポリクローナル
アイソタイプ	IgG

アプリケーション

Our [Abpromise guarantee](#) covers the use of **ab84503** in the following tested applications.

The application notes include recommended starting dilutions; optimal dilutions/concentrations should be determined by the end user.

アプリケーション	Abreviews	特記事項
----------	-----------	------

IHC-P

追加情報

IHC-P: 1/100 - 1/500.

Epitope exposure is recommended.  
Epitope exposure with citrate buffer will enhance staining.

Likely to work with frozen sections.

Not yet tested in other applications.  
Optimal dilutions/concentrations should be determined by the end user.

## ターゲット情報

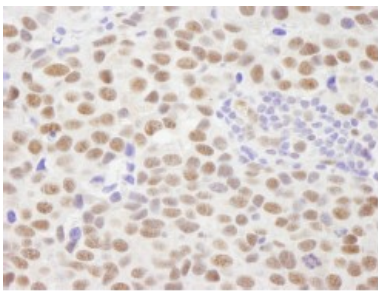
---

組織特異性	Widely expressed. Most abundant in testis, skeletal muscle, and heart.
配列類似性	Belongs to the PP2C family.
翻訳後修飾	Phosphorylated upon DNA damage, probably by ATM or ATR.
細胞内局在	Cytoplasm.

---

## 画像

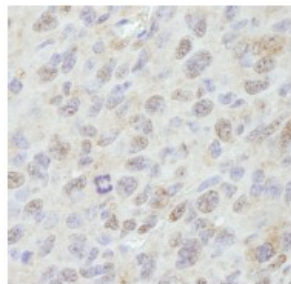
---



Staining of PPM1G by Immunohistochemistry on a formalin fixed, paraffin embedded section of human breast adenocarcinoma using a 1/500 dilution of ab84503. Detection: by DAB staining.

Immunohistochemistry (Formalin/PFA-fixed paraffin-embedded sections) - PPM1G antibody (ab84503)

---



Staining of PPM1G by Immunohistochemistry on a formalin fixed, paraffin embedded section of mouse squamous cell carcinoma using a 1/100 dilution of ab84503. Detection: by DAB staining.

Immunohistochemistry (Formalin/PFA-fixed paraffin-embedded sections) - PPM1G antibody (ab84503)

---

**Please note:** All products are "FOR RESEARCH USE ONLY AND ARE NOT INTENDED FOR DIAGNOSTIC OR THERAPEUTIC USE"

## **Our Abpromise to you: Quality guaranteed and expert technical support**

---

- Replacement or refund for products not performing as stated on the datasheet
- Valid for 12 months from date of delivery
- Response to your inquiry within 24 hours
  
- We provide support in Chinese, English, French, German, Japanese and Spanish
- Extensive multi-media technical resources to help you
- We investigate all quality concerns to ensure our products perform to the highest standards

If the product does not perform as described on this datasheet, we will offer a refund or replacement. For full details of the Abpromise, please visit <http://www.abcam.co.jp/abpromise> or contact our technical team.

## **Terms and conditions**

---

- Guarantee only valid for products bought direct from Abcam or one of our authorized distributors