


Product datasheet

Anti-PPAPDC3 antibody ab118576

画像数 3

製品の概要

製品名	Anti-PPAPDC3 antibody
製品の詳細	Rabbit polyclonal to PPAPDC3
アプリケーション	適用あり: WB, ELISA, IHC-P
種交差性	交差種: Mouse, Human 交差が予測される動物種: Rat 
免疫原	Synthetic peptide conjugated to KLH, corresponding to a region from the N-Terminus of Human PPAPDC3.
ポジティブ・コントロール	Human Heart and Human Skeletal Muscle tissues, Mouse heart tissue lysate

製品の特性

製品の状態	Liquid
保存方法	Shipped at 4°C. Store at +4°C short term (1-2 weeks). Store at -20°C or -80°C. Avoid freeze / thaw cycle.
バッファー	Preservative: 0.02% Sodium azide Constituent: 99% PBS
精製度	Immunogen affinity purified
ポリ/モノ	ポリクローナル
アイソタイプ	IgG

アプリケーション

Our [Abpromise guarantee](#) covers the use of **ab118576** in the following tested applications.

The application notes include recommended starting dilutions; optimal dilutions/concentrations should be determined by the end user.

アプリケーション	Abreviews	特記事項
WB		Use a concentration of 1 - 2 µg/ml. Predicted molecular weight: 29 kDa.
ELISA		Use at an assay dependent concentration.

アプリケーション	Abreviews	特記事項
----------	-----------	------

IHC-P Use a concentration of 5 µg/ml.

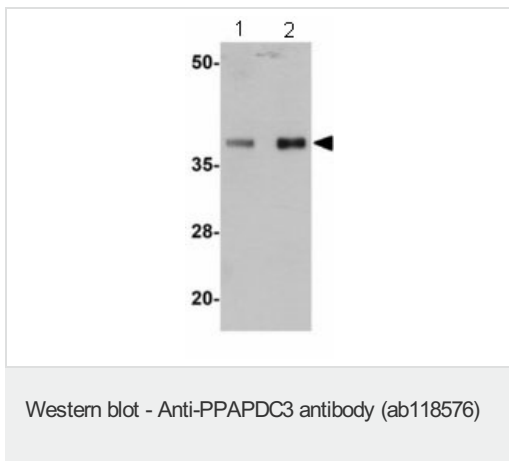
ターゲット情報

機能 Plays a role as negative regulator of myoblast differentiation, in part through effects on MTOR signaling. Has no detectable enzymatic activity.

配列類似性 Belongs to the PA-phosphatase related phosphoesterase family.

細胞内局在 Nucleus envelope. Endoplasmic reticulum membrane. Membrane. Both the N-and C-terminal are exposed to the cytoplasm/nucleoplasm.

画像



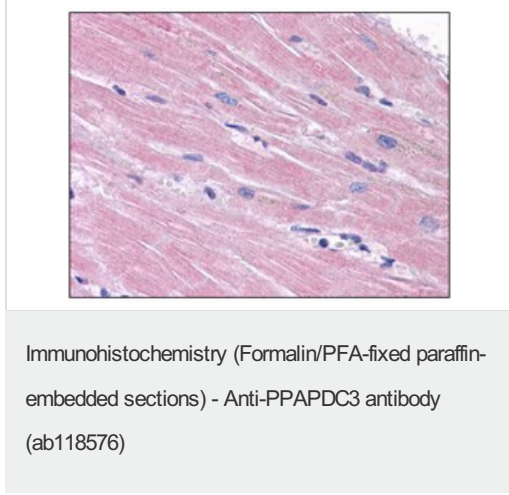
Lane 1 : Anti-PPAPDC3 antibody (ab118576) at 1 µg/ml

Lane 2 : Anti-PPAPDC3 antibody (ab118576) at 2 µg/ml

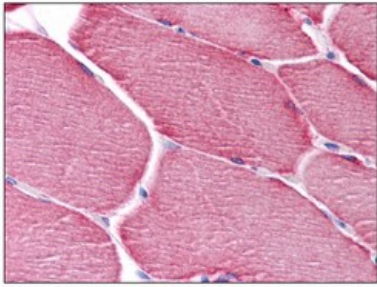
Lane 1 : Mouse heart lysate

Lane 2 : Mouse heart lysate

Predicted band size : 29 kDa



Human Heart: Formalin-Fixed, Paraffin-Embedded (FFPE) using ab118576 at a concentration of 5 µg/ml.



Human Skeletal Muscle: Formalin-Fixed,
Paraffin-Embedded (FFPE) using ab118576
at a concentration of 5 µg/ml.

Immunohistochemistry (Formalin/PFA-fixed paraffin-
embedded sections) - Anti-PPAPDC3 antibody
(ab118576)

Please note: All products are "FOR RESEARCH USE ONLY AND ARE NOT INTENDED FOR DIAGNOSTIC OR THERAPEUTIC USE"

Our Abpromise to you: Quality guaranteed and expert technical support

- Replacement or refund for products not performing as stated on the datasheet
- Valid for 12 months from date of delivery
- Response to your inquiry within 24 hours
- We provide support in Chinese, English, French, German, Japanese and Spanish
- Extensive multi-media technical resources to help you
- We investigate all quality concerns to ensure our products perform to the highest standards

If the product does not perform as described on this datasheet, we will offer a refund or replacement. For full details of the Abpromise, please visit <http://www.abcam.co.jp/abpromise> or contact our technical team.

Terms and conditions

- Guarantee only valid for products bought direct from Abcam or one of our authorized distributors