


## Product datasheet

# Anti-PP5 antibody ab71150

画像数 3

### 製品の概要

製品名	Anti-PP5 antibody
製品の詳細	Rabbit polyclonal to PP5
由来種	Rabbit
アプリケーション	適用あり: WB, IP, IHC-P
種交差性	交差種: Mouse, Human 交差が予測される動物種: Rat, Guinea pig, Cow, Pig, Chimpanzee, Rhesus monkey, Gorilla, Orangutan 
免疫原	A synthetic peptide corresponding to a region between residue 1 and 50 of human PP5 (NP_006238.1).
ポジティブ・コントロール	Whole cell lysate from Hela cells, 293T cells and NIH3T3 cells.

### 製品の特性

製品の状態	Liquid
保存方法	Shipped at 4°C. Upon delivery aliquot and store at -20°C. Avoid freeze / thaw cycles.
バッファー	Preservative: 0.09% Sodium Azide Constituents: 0.1% BSA, Tris buffered saline
精製度	Immunogen affinity purified
ポリ/モノ	ポリクローナル
アイソタイプ	IgG

### アプリケーション

Our [Abpromise guarantee](#) covers the use of **ab71150** in the following tested applications.

The application notes include recommended starting dilutions; optimal dilutions/concentrations should be determined by the end user.

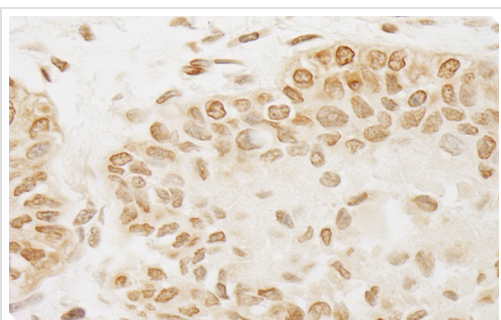
アプリケーション	Abreviews	特記事項
WB		1/2000 - 1/10000. Detects a band of approximately 60 kDa (predicted molecular weight: 55 kDa).

アプリケーション	Abreviews	特記事項
IP		Use at 2-5 µg/mg of lysate.
IHC-P		1/200 - 1/1000. Perform heat mediated antigen retrieval with Tris/EDTA buffer pH 9.0 before commencing with IHC staining protocol.

## ターゲット情報

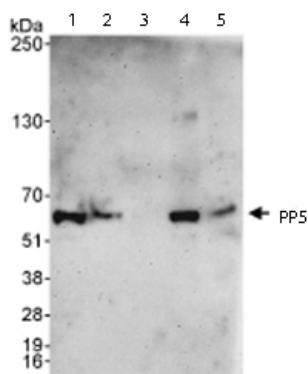
機能	May play a role in the regulation of RNA biogenesis and/or mitosis. In vitro, dephosphorylates serine residues of skeletal muscle phosphorylase and histone H1.
組織特異性	Ubiquitous.
配列類似性	Belongs to the PPP phosphatase family. PP-5 (PP-T) subfamily. Contains 3 TPR repeats.
細胞内局在	Nucleus. Cytoplasm. Predominantly nuclear. But also present in the cytoplasm.

## 画像



Immunohistochemistry (Formalin/PFA-fixed paraffin-embedded sections) analysis of human prostate carcinoma tissue labelling PPP5 with ab71150 at 1/200 (1µg/ml).  
Detection: DAB.

Immunohistochemistry (Formalin/PFA-fixed paraffin-embedded sections) - Anti-PP5 antibody (ab71150)



Western blot - Anti-PP5 antibody (ab71150)

**All lanes :** Anti-PP5 antibody (ab71150) at 0.04 µg/ml

**Lane 1 :** Whole cell lysate from HeLa cells at 50 µg

**Lane 2 :** Whole cell lysate from HeLa cells at 15 µg

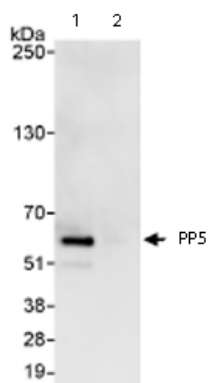
**Lane 3 :** Whole cell lysate from HeLa cells at 5 µg

**Lane 4 :** Whole cell lysate from 293T cells at 50 µg

**Lane 5 :** Whole cell lysate from NIH3T3 cells at 50 µg

**Predicted band size:** 55 kDa

**Observed band size:** 60 kDa



Immunoprecipitation - Anti-PP5 antibody (ab71150)

Immunoprecipitation/ Western Blot of PP5

Lane 1: ab71150 at 3µg/mg whole cell lysate.

Lane 2: IgG control IP

Whole cell lysate from HeLa cells at 1mg for IP, 20% of IP loaded.

Subsequent WB detection was performed using 1 µg/ml ab71150.

Chemiluminescence with an exposure time of 5 seconds.

**Please note:** All products are "FOR RESEARCH USE ONLY AND ARE NOT INTENDED FOR DIAGNOSTIC OR THERAPEUTIC USE"

### Our Abpromise to you: Quality guaranteed and expert technical support

- Replacement or refund for products not performing as stated on the datasheet
- Valid for 12 months from date of delivery
- Response to your inquiry within 24 hours
- We provide support in Chinese, English, French, German, Japanese and Spanish
- Extensive multi-media technical resources to help you
- We investigate all quality concerns to ensure our products perform to the highest standards

If the product does not perform as described on this datasheet, we will offer a refund or replacement. For full details of the Abpromise, please visit <http://www.abcam.co.jp/abpromise> or contact our technical team.

## Terms and conditions

---

- Guarantee only valid for products bought direct from Abcam or one of our authorized distributors