

Product datasheet

PLK4 overexpression 293T lysate (whole cell) ab94256

画像数 2

製品の概要

製品名	PLK4 overexpression 293T lysate (whole cell)
製品の詳細	PLK4 overexpression lysate
特記事項	ab94256 is a 293T cell transfected lysate in which Human PLK4 has been transiently over-expressed using a pCMV-PLK4 plasmid. The lysate is provided in 1X Sample Buffer. Note: For more details about how the transfected lysate was prepared view preparation notes
アプリケーション	適用あり: WB

法規制情報

医薬用外劇物

製品の特性

製品の状態	Liquid
保存方法	Shipped on dry ice. Upon delivery aliquot and store at -20°C. Avoid freeze / thaw cycles.
バッファー	pH: 6.80 Constituent: 100% 1x Sample Buffer
精製度	Whole Cell Lysate
背景	Function: Serine/threonine-protein kinase that plays a central role in centriole duplication. Able to trigger procentriole formation on the surface of the parental centriole cylinder, leading to the recruitment of centriole biogenesis proteins such as SASS6, CENPJ/CPAP, CP110, CEP135 and gamma-tubulin. When overexpressed, it is able to induce centrosome amplification through the simultaneous generation of multiple procentrioles adjoining each parental centriole during S phase. Its central role in centriole replication suggests a possible role in tumorigenesis, centrosome aberrations being frequently observed in tumors. Also involved in trophoblast differentiation by phosphorylating HAND1, leading to disrupt the interaction between HAND1 and MDFIC and activate HAND1. Phosphorylates CDC25C and CHEK2/CHK2. Similarity: Belongs to the protein kinase superfamily. Ser/Thr protein kinase family. CDC5/Polo subfamily. Contains 1 POLO box domain. Contains 1 protein kinase domain. PTM: Ubiquitinated; leading to its degradation by the proteasome. Tyrosine-phosphorylated by TEC.

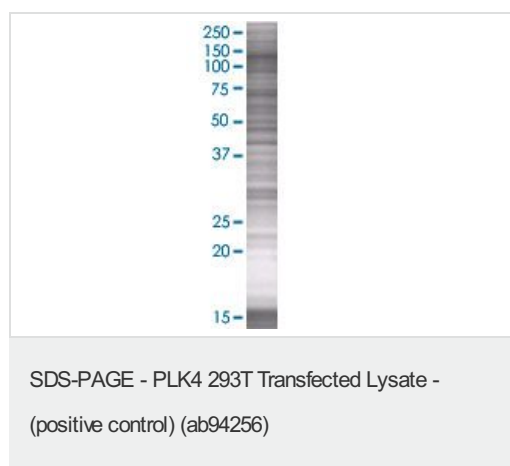
アプリケーション

Our [Abpromise guarantee](#) covers the use of **ab94256** in the following tested applications.

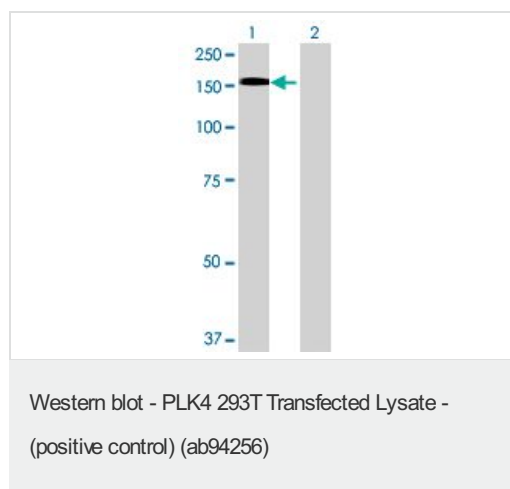
The application notes include recommended starting dilutions; optimal dilutions/concentrations should be determined by the end user.

アプリケーション	Abreviews	特記事項
WB		Use at an assay dependent dilution.

画像



ab94256 at 15µg/lane on an SDS-PAGE gel.



All lanes : Anti-PLK4 antibody ([ab56752](#)) at 1/500 dilution

Lane 1 : PLK4 overexpression 293T lysate (whole cell) (ab94256)

Lane 2 : 293T non-transfected lysate

Lysates/proteins at 25 µg per lane.

Secondary

All lanes : Goat Anti-mouse IgG (H and L) HRP conjugated at 1/2500 dilution

Please note: All products are "FOR RESEARCH USE ONLY AND ARE NOT INTENDED FOR DIAGNOSTIC OR THERAPEUTIC USE"

Our Abpromise to you: Quality guaranteed and expert technical support

- Replacement or refund for products not performing as stated on the datasheet
- Valid for 12 months from date of delivery
- Response to your inquiry within 24 hours
- We provide support in Chinese, English, French, German, Japanese and Spanish
- Extensive multi-media technical resources to help you

- We investigate all quality concerns to ensure our products perform to the highest standards

If the product does not perform as described on this datasheet, we will offer a refund or replacement. For full details of the Abpromise, please visit <http://www.abcam.co.jp/abpromise> or contact our technical team.

Terms and conditions

- Guarantee only valid for products bought direct from Abcam or one of our authorized distributors