

Product datasheet

Anti-PKA alpha/beta/gamma (catalytic subunit) (phospho T197) antibody [EP2606Y] ab75991

リコンビナント RabMAb®

★★★★★ 1 Abreviews 8 References 画像数 5

製品の概要

製品名	Anti-PKA alpha/beta/gamma (catalytic subunit) (phospho T197) antibody [EP2606Y]
製品の詳細	Rabbit monoclonal [EP2606Y] to PKA alpha/beta/gamma (catalytic subunit) (phospho T197)
由来種	Rabbit
特異性	Detects PKA alpha/beta/gamma (catalytic subunit) phosphorylated on threonine 197. Moreover, the antibody will cross-react with PRKX/Y (pT203).
アプリケーション	適用あり: WB, IP, IHC-P, ICC 適用なし: Flow Cyt
種交差性	交差種: Mouse, Rat, Human
免疫原	Synthetic peptide within Human PKA alpha/beta/gamma (catalytic subunit) aa 150-250 (phospho T197). The exact sequence is proprietary.
ポジティブ・コントロール	WB: HeLa cell lysate treated with calyculin A.
特記事項	

Our RabMAb® technology is a patented hybridoma-based technology for making rabbit monoclonal antibodies. For details on our patents, please refer to [RabMAb® patents](#)

This product is a recombinant rabbit monoclonal antibody.

製品の特性

製品の状態	Liquid
保存方法	Shipped at 4°C. Upon delivery aliquot and store at -20°C. Avoid repeated freeze / thaw cycles.
バッファー	PBS 49%, Sodium azide 0.01%, Glycerol 50%, BSA 0.05%
精製度	Tissue culture supernatant
ポリ/モノ	モノクローナル
クローン名	EP2606Y
アイソタイプ	IgG

アプリケーション

Our [Abpromise guarantee](#) covers the use of **ab75991** in the following tested applications.

The application notes include recommended starting dilutions; optimal dilutions/concentrations should be determined by the end user.

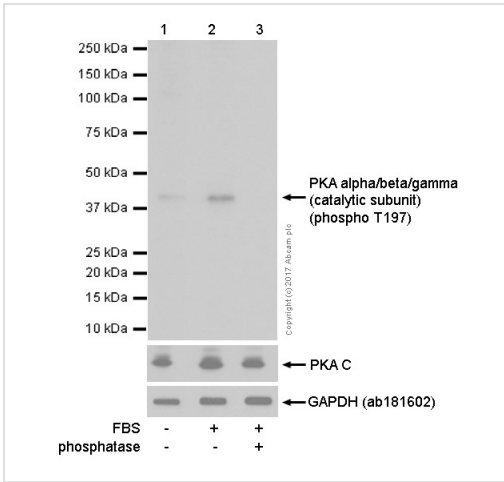
アプリケーション	Abreviews	特記事項
WB	★★★★★	1/2500 - 1/5000. Predicted molecular weight: 40 kDa.
IP		1/30.
IHC-P		1/100 - 1/250. Perform heat mediated antigen retrieval before commencing with IHC staining protocol. Use of HRP-conjugated or polymerized HRP secondary antibodies recommended, stronger signals have been found using the polymerized HRP secondary.
ICC		1/100 - 1/250.

追加情報

Is unsuitable for Flow Cyt.

ターゲット情報

画像



Western blot - Anti-PKA alpha/beta/gamma (catalytic subunit) (phospho T197) antibody [EP2606Y] (ab75991)

All lanes : Anti-PKA alpha/beta/gamma (catalytic subunit) (phospho T197) antibody [EP2606Y] (ab75991) at 1/1000 dilution

Lane 1 : Jurkat (Human T cell leukemia T lymphocyte) 10% FBS all the time. Whole cell lysates

Lane 2 : Jurkat (Human T cell leukemia T lymphocyte) serum starve for 24h then 20% FBS 20h. Whole cell lysates

Lane 3 : Jurkat (Human T cell leukemia T lymphocyte) serum starve for 24h then 20% FBS 20h. Whole cell lysates. Then the membrane was incubated with phosphatase.

Lysates/proteins at 15 µg per lane.

Secondary

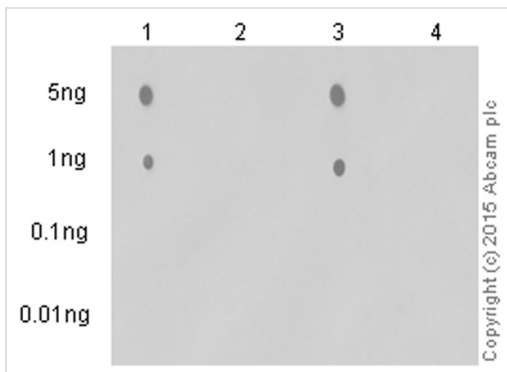
All lanes : Goat Anti-Rabbit IgG H&L (HRP) (ab97051) at 1/20000 dilution

Predicted band size: 40 kDa

Observed band size: 40 kDa

Exposure time: 1 second

Blocking and diluting buffer and concentration: 5% NFDN/TBST.



Dot Blot - Anti-PKA alpha/beta/gamma (catalytic subunit) (phospho T197) antibody [EP2606Y] (ab75991)

Dot blot analysis of various peptides labelling PKA gamma (catalytic subunit) (phospho T197) with ab75991 at a dilution of 1/1000. [ab97051](#), a peroxidase-conjugated goat anti-rabbit IgG (H+L) was used as the secondary antibody (1/100000).

Lane 1 - PKA alpha/beta/gamma (catalytic subunit) (pT197) phospho peptide.

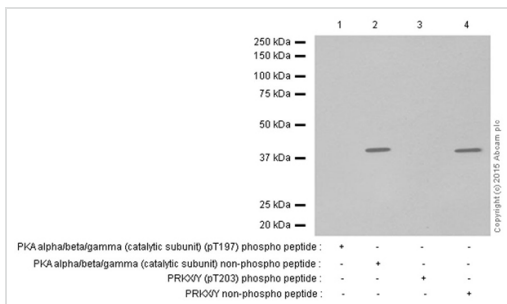
Lane 2 - PKA alpha/beta/gamma (catalytic subunit) non-phospho peptide.

Lane 3 - PRKX/Y (pT203) phospho peptide.

Lane 4 - PRKX/Y non-phospho peptide.

Blocking and dilution buffer: 5% NFD/MTBST.

Exposure time: 3 minutes.



Western blot - Anti-PKA alpha/beta/gamma (catalytic subunit) (phospho T197) antibody [EP2606Y] (ab75991)

All lanes : Anti-PKA alpha/beta/gamma (catalytic subunit) (phospho T197) antibody [EP2606Y] (ab75991) at 1/5000 dilution

Lane 1 : HeLa whole cell lysate - treated with Calyculin A with PKA alpha/beta/gamma (catalytic subunit) (pT197) phospho peptide

Lane 2 : HeLa whole cell lysate - treated with Calyculin A with PKA alpha/beta/gamma (catalytic subunit) non-phospho peptide

Lane 3 : HeLa whole cell lysate - treated with Calyculin A with PRKXX/Y (pT203) phospho peptide

Lane 4 : HeLa whole cell lysate - treated with Calyculin A with PRKXX/Y non-phospho peptide

Secondary

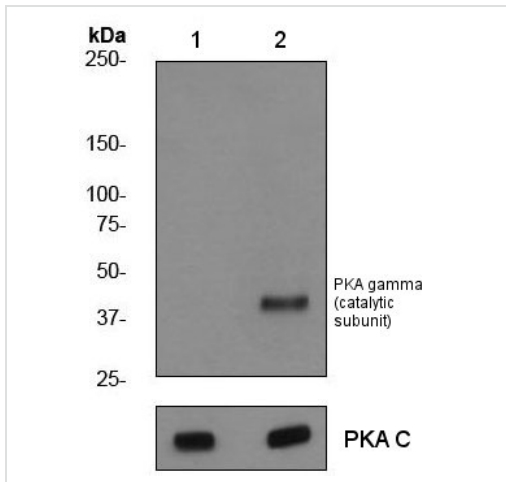
All lanes : Goat Anti-Rabbit IgG H&L (HRP) (ab97051) at 1/20000 dilution

Predicted band size: 40 kDa

Observed band size: 40 kDa

Exposure time: 3 minutes

Blocking and dilution buffer: 5% NFDN/TBST.



Western blot - Anti-PKA alpha/beta/gamma (catalytic subunit) (phospho T197) antibody [EP2606Y] (ab75991)

All lanes : Anti-PKA alpha/beta/gamma (catalytic subunit) (phospho T197) antibody [EP2606Y] (ab75991) at 1/5000 dilution

Lane 1 : HeLa cell lysates, untreated

Lane 2 : HeLa cell lysates treated with calyculin A

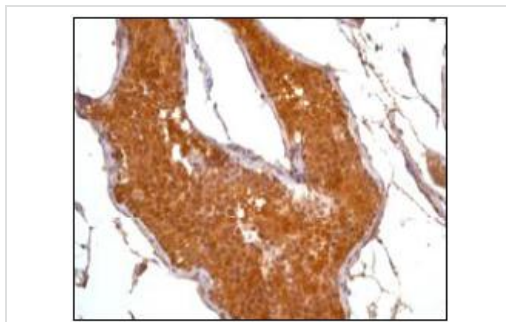
Lysates/proteins at 10 µg per lane.

Secondary

All lanes : HRP-conjugated goat-anti rabbit IgG at 1/2000 dilution

Predicted band size: 40 kDa

Observed band size: 40 kDa



Immunohistochemistry (Formalin/PFA-fixed paraffin-embedded sections) - Anti-PKA alpha/beta/gamma (catalytic subunit) (phospho T197) antibody [EP2606Y] (ab75991)

ab75991, at a 1/100 dilution, staining PKA gamma (catalytic subunit) in formalin fixed, paraffin embedded human testis tissue by Immunohistochemistry.

Please note: All products are "FOR RESEARCH USE ONLY AND ARE NOT INTENDED FOR DIAGNOSTIC OR THERAPEUTIC USE"

Our Abpromise to you: Quality guaranteed and expert technical support

- Replacement or refund for products not performing as stated on the datasheet
- Valid for 12 months from date of delivery
- Response to your inquiry within 24 hours
- We provide support in Chinese, English, French, German, Japanese and Spanish
- Extensive multi-media technical resources to help you
- We investigate all quality concerns to ensure our products perform to the highest standards

If the product does not perform as described on this datasheet, we will offer a refund or replacement. For full details of the Abpromise,

please visit <http://www.abcam.co.jp/abpromise> or contact our technical team.

Terms and conditions

- Guarantee only valid for products bought direct from Abcam or one of our authorized distributors