


## Product datasheet

# Anti-PI4 kinase beta antibody ab94604

### 画像数 1

#### 製品の概要

製品名	Anti-PI4 kinase beta antibody
製品の詳細	Rabbit polyclonal to PI4 kinase beta
由来種	Rabbit
アプリケーション	<b>適用あり:</b> WB
種交差性	<b>交差種:</b> Human <b>交差が予測される動物種:</b> Mouse, Rat, Rabbit, Horse, Chicken, Guinea pig, Cow, Cat, Dog, Zebrafish 
免疫原	Synthetic peptide corresponding to a region within N terminal amino acids 252-301 (ILSDELKPAH RKRELPSLSP APDTGLSPSK RTHQRSKSDA TASISLSSNL) of Human PI4 kinase beta (NP_002642). <a href="#">Run BLAST with ExPASy</a> <a href="#">Run BLAST with NCBI</a>
ポジティブ・コントロール	Jurkat cell lysate

#### 製品の特性

製品の状態	Liquid
保存方法	Shipped at 4°C. Upon delivery aliquot and store at -20°C. Avoid freeze / thaw cycles.
バッファー	Preservative: None Constituents: 2% Sucrose, PBS
精製度	Immunogen affinity purified
ポリ/モノ	ポリクローナル
アイソタイプ	IgG

#### アプリケーション

Our [Abpromise guarantee](#) covers the use of **ab94604** in the following tested applications.

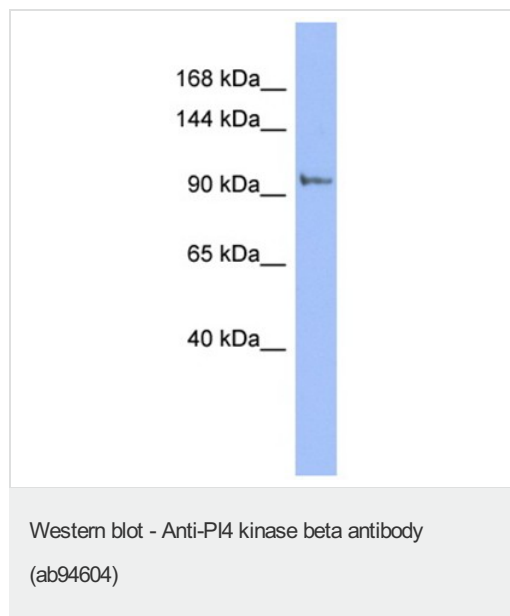
The application notes include recommended starting dilutions; optimal dilutions/concentrations should be determined by the end user.

アプリケーション	Abreviews	特記事項
WB		Use a concentration of 1 µg/ml. Predicted molecular weight: 91 kDa. Good results were obtained when blocked with 5% non-fat dry milk in 0.05% PBS-T.

## ターゲット情報

<b>機能</b>	Phosphorylates phosphatidylinositol (PI) in the first committed step in the production of the second messenger inositol-1,4,5,-trisphosphate (PIP). May regulate Golgi disintegration/reorganization during mitosis, possibly via its phosphorylation. Involved in Golgi-to-plasma membrane trafficking.
<b>組織特異性</b>	Widely expressed with highest levels in heart, skeletal muscle, pancreas, testis and ovary. Weakly expressed in liver.
<b>配列類似性</b>	Belongs to the PI3/PI4-kinase family. Type III PI4K subfamily. Contains 1 PI3K/PI4K domain. Contains 1 PIK helical domain.
<b>細胞内局在</b>	Endomembrane system. Mitochondrion outer membrane. Rough endoplasmic reticulum membrane. Golgi apparatus. Cytoplasm, perinuclear region. Found in the outer membrane of mitochondria and membranes of the rough endoplasmic reticulum. Recruited to the Golgi complex by the small GTPase ARF to stimulate the synthesis of phosphatidylinositol 4,5-bisphosphate (PIP <sub>2</sub> ) on the Golgi complex.

## 画像



Anti-PI4 kinase beta antibody (ab94604) at 1 µg/ml (in 5% skim milk / PBS buffer) + Jurkat cell lysate at 10 µg

### Secondary

HRP conjugated anti-Rabbit IgG at 1/50000 dilution

**Predicted band size:** 91 kDa

Gel concentration 6-18%

**Please note:** All products are "FOR RESEARCH USE ONLY AND ARE NOT INTENDED FOR DIAGNOSTIC OR THERAPEUTIC USE"

**Our Abpromise to you: Quality guaranteed and expert technical support**

- Replacement or refund for products not performing as stated on the datasheet
- Valid for 12 months from date of delivery
- Response to your inquiry within 24 hours
  
- We provide support in Chinese, English, French, German, Japanese and Spanish
- Extensive multi-media technical resources to help you
- We investigate all quality concerns to ensure our products perform to the highest standards

If the product does not perform as described on this datasheet, we will offer a refund or replacement. For full details of the Abpromise, please visit <http://www.abcam.co.jp/abpromise> or contact our technical team.

## **Terms and conditions**

---

- Guarantee only valid for products bought direct from Abcam or one of our authorized distributors