

Product datasheet

Anti-PET112L antibody ab122802

画像数 3

製品の概要

製品名	Anti-PET112L antibody
製品の詳細	Rabbit polyclonal to PET112L
由来種	Rabbit
アプリケーション	<b>適用あり:</b> WB, IHC-P, ICC/IF
種交差性	<b>交差種:</b> Human
免疫原	antigen sequence: WKREGKTPGQ IVSEKQLELM QDQGALEQLC HSVMEAHPQV VMDVKNRNPR AINKLIGLVR KATQSRADPV MIKEILEKK, corresponding to amino acids of Human PET112L. <a href="#">Run BLAST with ExPASy</a> <a href="#">Run BLAST with NCBI</a>
ポジティブ・コントロール	RT4, U251 MG, Human liver and tonsil lysates; Human colon tissue; U 2 OS cells.

製品の特性

製品の状態	Liquid
保存方法	Shipped at 4°C. Upon delivery aliquot and store at -20°C. Avoid freeze / thaw cycles.
バッファー	pH: 7.20 Preservative: 0.02% Sodium azide Constituents: 59% PBS, 40% Glycerol
精製度	Immunogen affinity purified
ポリ/モノ	ポリクローナル
アイソタイプ	IgG

アプリケーション

Our [Abpromise guarantee](#) covers the use of **ab122802** in the following tested applications.

The application notes include recommended starting dilutions; optimal dilutions/concentrations should be determined by the end user.

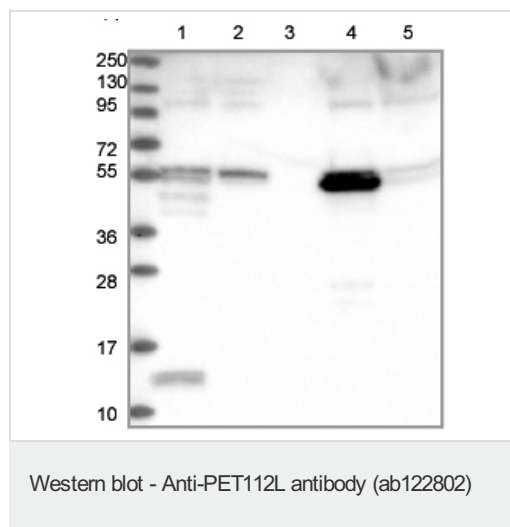
アプリケーション	Abreviews	特記事項
WB		1/250 - 1/500.

アプリケーション	Abreviews	特記事項
IHC-P		1/500 - 1/1000. Perform heat mediated antigen retrieval with citrate buffer pH 6 before commencing with IHC staining protocol.
ICC/IF		Use a concentration of 1 - 4 µg/ml. using PFA/Triton X-100 Fixation/Permeabilization.

## ターゲット情報

機能	Furnishes a means for formation of correctly charged Gln-tRNA(Gln) through the transamidation of misacylated Glu-tRNA(Gln) in the mitochondria. The reaction takes place in the presence of glutamine and ATP through an activated gamma-phospho-Glu-tRNA(Gln).
組織特異性	Predominantly expressed in tissues characterized by high rates of oxidative phosphorylation (OxPhos), including muscle and heart.
配列類似性	Belongs to the gatB/gatE family. GatB subfamily.
細胞内局在	Mitochondrion.

## 画像



**All lanes** : Anti-PET112L antibody  
(ab122802) at 1/250 dilution

**Lane 1** : RT 4 lysate

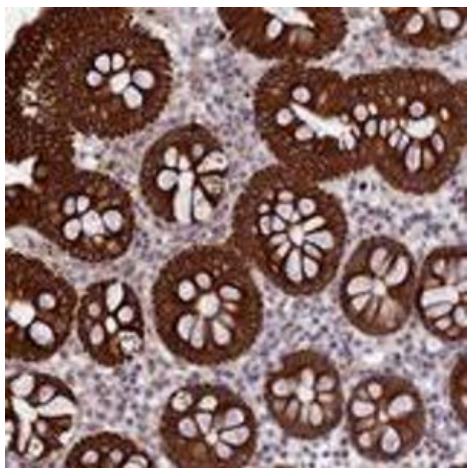
**Lane 2** : U 251 MG lysate

**Lane 3** : Human plasma lysate

**Lane 4** : Human liver lysate

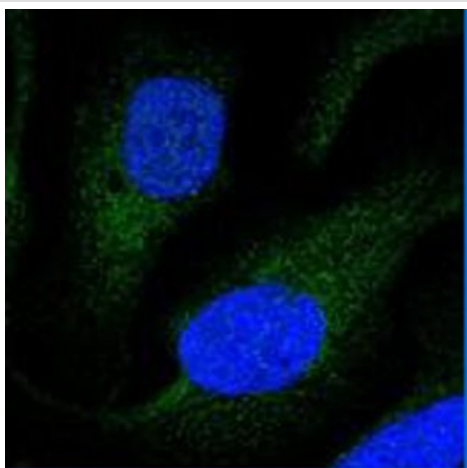
**Lane 5** : Human tonsil lysate

Developed using the ECL technique.



ab122802, at 1/500 dilution, staining  
PET112L in Paraffin-embedded Human colon  
tissue by Immunohistochemistry

Immunohistochemistry (Formalin/PFA-fixed paraffin-  
embedded sections) - Anti-PET112L antibody  
(ab122802)



ab122802 at 4 µg/ml staining PET112L in  
PFA/Triton X-100 fixed/permeabilized U 2 OS  
cells by Immunofluorescence (green).

Immunocytochemistry/ Immunofluorescence - Anti-  
PET112L antibody (ab122802)

**Please note:** All products are "FOR RESEARCH USE ONLY AND ARE NOT INTENDED FOR DIAGNOSTIC OR THERAPEUTIC USE"

### Our Abpromise to you: Quality guaranteed and expert technical support

- Replacement or refund for products not performing as stated on the datasheet
- Valid for 12 months from date of delivery
- Response to your inquiry within 24 hours
- We provide support in Chinese, English, French, German, Japanese and Spanish
- Extensive multi-media technical resources to help you
- We investigate all quality concerns to ensure our products perform to the highest standards

If the product does not perform as described on this datasheet, we will offer a refund or replacement. For full details of the Abpromise, please visit <http://www.abcam.co.jp/abpromise> or contact our technical team.

## Terms and conditions

---

- Guarantee only valid for products bought direct from Abcam or one of our authorized distributors