

Product datasheet

Anti-PDI antibody ab3672

★★★★☆ 13 Abreviews 17 References 画像数 6

製品の概要

製品名	Anti-PDI antibody
製品の詳細	Rabbit polyclonal to PDI
由来種	Rabbit
特異性	PDI runs at 61.2 kD on samples from human placenta. In samples from rat liver, it runs at 59 kD, but 3 other bands may appear due to protein degradation - these run at 58.9 kD, 55.2 kD and 53.8 kD.
アプリケーション	適用あり: ICC, WB, IHC-P, IHC-Fr, ICC/IF
種交差性	交差種: Mouse, Rat, Hamster, Cow, Human, African green monkey, Chinese hamster
免疫原	Full length protein.

製品の特性

製品の状態	Liquid
保存方法	Shipped at 4°C. Store at +4°C short term (1-2 weeks). Upon delivery aliquot. Store at -20°C or -80°C. Avoid freeze / thaw cycle.
バッファー	Preservative: 0.1% Sodium Azide
精製度	Whole antiserum
ポリ/モノ	ポリクローナル
アイソタイプ	IgG

アプリケーション

Our [Abpromise guarantee](#) covers the use of **ab3672** in the following tested applications.

The application notes include recommended starting dilutions; optimal dilutions/concentrations should be determined by the end user.

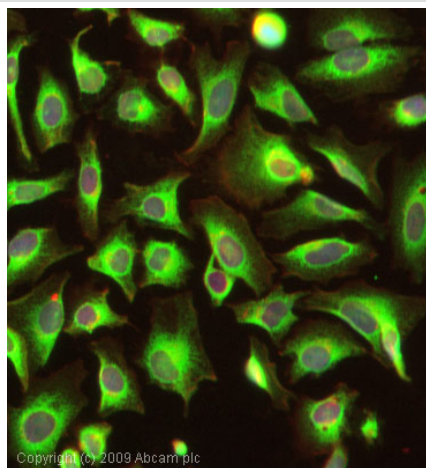
アプリケーション	Abreviews	特記事項
ICC		1/50 - 1/100.
WB	★★★★☆	1/1000. Detects a band of approximately 60 kDa.

アプリケーション	Abreviews	特記事項
IHC-P	★★★★☆	Use at an assay dependent concentration.
IHC-Fr	★★★★☆	1/100.
ICC/IF	★★★★★	1/600. PubMed: 19059915

ターゲット情報

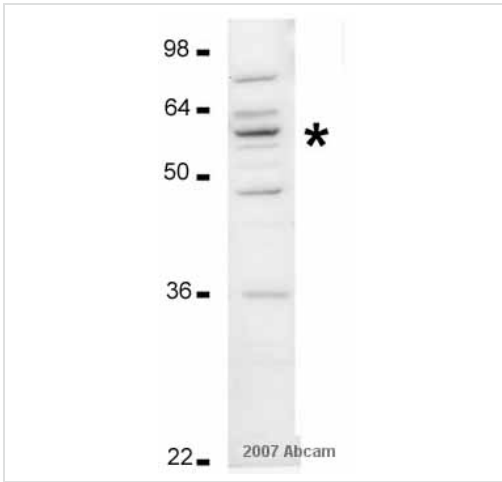
機能	Acts as an intracellular estrogen-binding protein. May be involved in modulating cellular levels and biological functions of estrogens in the pancreas. May act as a chaperone that inhibits aggregation of misfolded proteins.
組織特異性	Highly expressed in pancreas (at protein level).
配列類似性	Belongs to the protein disulfide isomerase family. Contains 2 thioredoxin domains.
翻訳後修飾	The disulfide-linked homodimer exhibits an enhanced chaperone activity. Glycosylated.
細胞内局在	Endoplasmic reticulum lumen.

画像



Immunocytochemistry/ Immunofluorescence - Anti-PDI antibody (ab3672)

ICC/IF image of ab3672 stained HeLa cells. The cells were 4% PFA fixed (10 min) and then incubated in 1%BSA / 10% normal goat serum / 0.3M glycine in 0.1% PBS-Tween for 1h to permeabilise the cells and block non-specific protein-protein interactions. The cells were then incubated with the antibody (ab3672, 1 μ g/ml) overnight at +4 \circ C. The secondary antibody (green) was Alexa Fluor $\text{\textcircled{R}}$ 488 goat anti-rabbit IgG (H+L) used at a 1/1000 dilution for 1h. Alexa Fluor $\text{\textcircled{R}}$ 594 WGA was used to label plasma membranes (red) at a 1/200 dilution for 1h. DAPI was used to stain the cell nuclei (blue) at a concentration of 1.43 μ M.



Western blot - Anti-PDI antibody (ab3672)

Anti-PDI antibody (ab3672) at 1/1000 dilution
+ PC12 whole cell lysate at 20 µg

Secondary

HRP conjugated swine anti-rabbit antibody

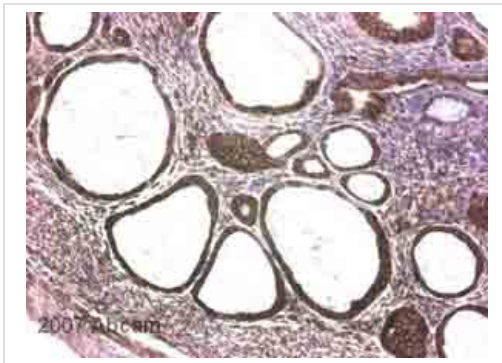
Developed using the ECL technique.

Performed under reducing conditions.

Observed band size: 60 kDa

Additional bands at: 36 kDa, 48 kDa, 58 kDa, 75 kDa. We are unsure as to the identity of these extra bands.

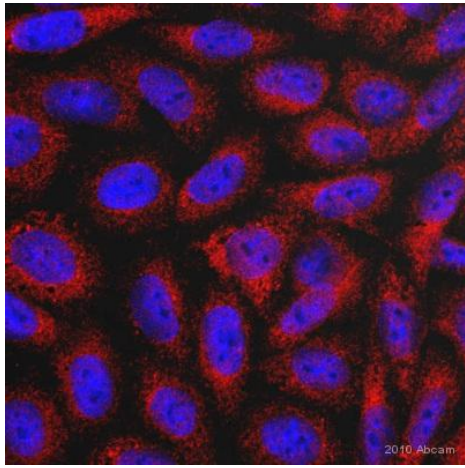
Exposure time: 2 minutes



Immunohistochemistry (Formalin/PFA-fixed paraffin-embedded sections) - Anti-PDI antibody (ab3672)

This image is courtesy of an anonymous Abreview

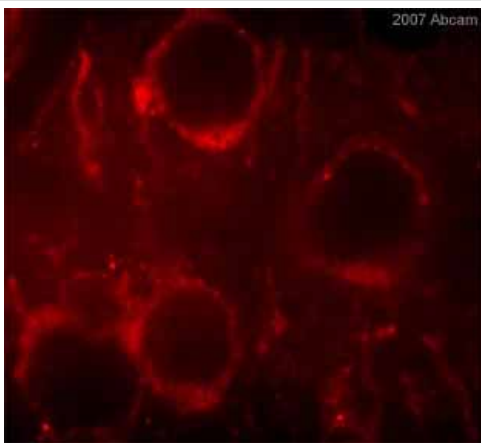
ab3672 at 1/400 staining mouse kidney tissue sections by IHC-P. The tissue was formaldehyde fixed and a heat mediated antigen retrieval step was performed in citrate buffer. The tissue was incubated with the primary antibody for 30 minutes at 22°C and then an HRP conjugated goat anti-rabbit antibody was used as the secondary.



Chinese Hamster Ovary cells stained for PDI using ab3672 at 1/200 dilution ICC/IF. Cy3[®]-labeled secondary antibody.

Immunocytochemistry/ Immunofluorescence - Anti-PDI antibody (ab3672)

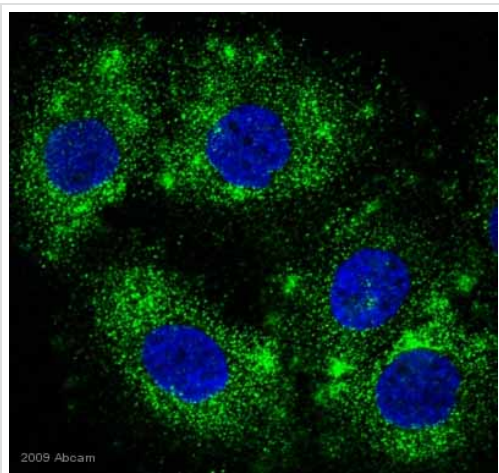
Image courtesy of an anonymous AbReview



ab3672 staining mouse cortical oligodendrocytes from vibratome sections by IHC-Fr. Sections were fixed in Somogyi (PFA + glutaraldehyde + picric acid) or PLP (Periodate-lysine-PFA) and permeabilized in TX-100, prior to blocking with 2.5% serum for 2 hours at 25°C. The primary antibody was diluted 1/1000 and incubated with the sample for 18 hours at 25°C. A TRITC conjugated pig anti-rabbit IgG antibody, diluted 1/1000, was used as the secondary.

Immunohistochemistry (Frozen sections) - Anti-PDI antibody (ab3672)

This image is courtesy of an Abreview submitted by Dr Guillermo Estivill-Torres



ab3672 staining PDI - ER in human HaCaT Keratinocyte by ICC/IF. The cells were paraformaldehyde fixed, permeabilized in 0.25% triton X-100 buffer and blocked in 2.5% BSA plus 1% goat serum for 1 hour at 4°C. The primary antibody was diluted 1/100 and incubated with sample for 1 hour at 24°C. An Alexa Fluor® 488 conjugated goat polyclonal to rabbit IgG, diluted 1/1000 was used as secondary.

Immunohistochemistry (Formalin/PFA-fixed paraffin-embedded sections) - Anti-PDI antibody (ab3672)

This image is courtesy of an anonymous Abreview

Please note: All products are "FOR RESEARCH USE ONLY AND ARE NOT INTENDED FOR DIAGNOSTIC OR THERAPEUTIC USE"

Our Abpromise to you: Quality guaranteed and expert technical support

- Replacement or refund for products not performing as stated on the datasheet
- Valid for 12 months from date of delivery
- Response to your inquiry within 24 hours
- We provide support in Chinese, English, French, German, Japanese and Spanish
- Extensive multi-media technical resources to help you
- We investigate all quality concerns to ensure our products perform to the highest standards

If the product does not perform as described on this datasheet, we will offer a refund or replacement. For full details of the Abpromise, please visit <http://www.abcam.co.jp/abpromise> or contact our technical team.

Terms and conditions

- Guarantee only valid for products bought direct from Abcam or one of our authorized distributors