

Product datasheet

Anti-PDE4A5 antibody ab42094

2 References 画像数 1

製品の概要

製品名	Anti-PDE4A5 antibody
製品の詳細	Rabbit polyclonal to PDE4A5
由来種	Rabbit
特異性	PDE4A5 variant specific. Does not cross-react with PDE4A8 or other PDE4A proteins including PDE4A4, PDE4A1 and PDE4Ax or with other PDE family members.
アプリケーション	適用あり: WB, IHC-Fr
種交差性	交差種: Mouse, Rat, Human
免疫原	Synthetic peptide (Rat)- unique N-terminal sequence PDE4A5 synthetic cyclic peptide, modified to achieve desired antigenicity and linker for covalent coupling to blue carrier protein.
ポジティブ・コントロール	Rat hippocampal extracts; SHSy-5Y cells.

製品の特性

製品の状態	Liquid
保存方法	Shipped at 4°C. Store at 4°C (up to 6 months). Store at -20°C.
バッファー	Antibody stabilization buffer, with preservatives, consisting of Hepes, NaCl, KCl, glycerol, BSA and chaotropic agents.
精製度	Immunogen affinity purified
ポリ/モノ	ポリクローナル
アイソタイプ	IgG

アプリケーション

Our [Abpromise guarantee](#) covers the use of **ab42094** in the following tested applications.

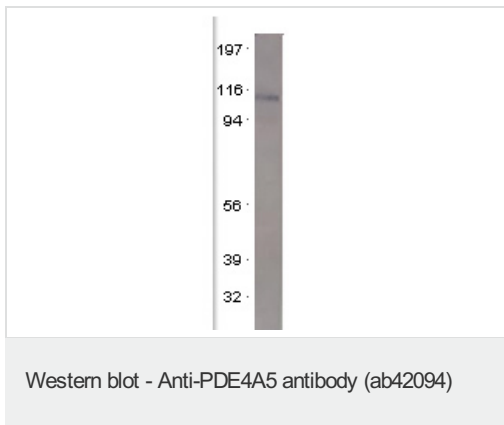
The application notes include recommended starting dilutions; optimal dilutions/concentrations should be determined by the end user.

アプリケーション	Abreviews	特記事項
WB		1/750 - 1/1000. Detects a band of approximately 108 kDa (predicted molecular weight: 108 kDa).
IHC-Fr		Use at an assay dependent concentration.

ターゲット情報

機能	Hydrolyzes the second messenger cAMP, which is a key regulator of many important physiological processes.
組織特異性	Isoform 1 is widely expressed. Isoform 2 is abundant in liver, stomach, testis, thyroid and adrenal glands. It is also found in placenta, kidney, pancreas, ovary, uterus, skin, monocytes, mast cells, macrophages, as well as in bronchial smooth muscle. Isoform 6 is expressed at high levels in the heart and small intestine. It is also found in the brain, kidney, spleen, colon, salivary gland, ovary and peripheral blood lymphocytes. Isoform 7 is expressed predominantly in skeletal muscle and brain and at lower levels in the testis. Isoform 7 is expressed in the brain. Found in specific neuronal subpopulations in cortex, spinal cord and cerebellum (at protein level).
パスウェイ	Purine metabolism; 3',5'-cyclic AMP degradation; AMP from 3',5'-cyclic AMP: step 1/1.
配列類似性	Belongs to the cyclic nucleotide phosphodiesterase family. PDE4 subfamily.
翻訳後修飾	Phosphorylated at Ser-686 and Ser-688 when expressed in <i>S.frugiperda</i> cells. Isoform 2 and isoform 7 are activated by phosphorylation at Ser-119 and Ser-123 respectively by PKA. Proteolytically cleaved by caspase-3.
細胞内局在	Cytoplasm > perinuclear region; Cytoplasm > perinuclear region. Cell projection > ruffle membrane; Cytoplasm. Membrane. Predominantly cytoplasmic and Membrane. Isoform 4 has propensity for association with membranes.

画像



Anti-PDE4A5 antibody (ab42094) + PDE4A5

Predicted band size: 108 kDa

Observed band size: 108 kDa

Please note: All products are "FOR RESEARCH USE ONLY AND ARE NOT INTENDED FOR DIAGNOSTIC OR THERAPEUTIC USE"

Our Abpromise to you: Quality guaranteed and expert technical support

- Replacement or refund for products not performing as stated on the datasheet
- Valid for 12 months from date of delivery
- Response to your inquiry within 24 hours
- We provide support in Chinese, English, French, German, Japanese and Spanish
- Extensive multi-media technical resources to help you
- We investigate all quality concerns to ensure our products perform to the highest standards

If the product does not perform as described on this datasheet, we will offer a refund or replacement. For full details of the Abpromise, please visit <http://www.abcam.co.jp/abpromise> or contact our technical team.

Terms and conditions

- Guarantee only valid for products bought direct from Abcam or one of our authorized distributors