

Product datasheet

Anti-PDE3A antibody ab125676

1 Abreviews 画像数 1

製品の概要

製品名	Anti-PDE3A antibody
製品の詳細	Rabbit polyclonal to PDE3A
アプリケーション	適用あり: IHC-P, IP, WB
種交差性	交差種: Mouse, Rat, Human
免疫原	Synthetic peptide, from the C-terminal region of Human PDE3A.
ポジティブ・コントロール	Lysate from COS cells transfected with Human PDE isoforms.

製品の特性

製品の状態	Liquid
保存方法	Shipped at 4°C. Upon delivery aliquot and store at -20°C or -80°C. Avoid repeated freeze / thaw cycles.
バッファー	Constituent: 99% Whole serum
精製度	Whole antiserum
ポリ/モノ	ポリクローナル
アイソタイプ	IgG

アプリケーション

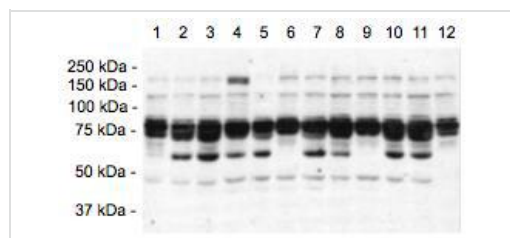
Our [Abpromise guarantee](#) covers the use of **ab125676** in the following tested applications.

The application notes include recommended starting dilutions; optimal dilutions/concentrations should be determined by the end user.

アプリケーション	Abreviews	特記事項
IHC-P		Use at an assay dependent concentration.
IP		Use at an assay dependent concentration.
WB		1/2000. Predicted molecular weight: 125 kDa.

<b>機能</b>	Cyclic nucleotide phosphodiesterase with a dual-specificity for the second messengers cAMP and cGMP, which are key regulators of many important physiological processes.
<b>配列類似性</b>	Belongs to the cyclic nucleotide phosphodiesterase family. PDE3 subfamily.
<b>細胞内局在</b>	Membrane.

## 画像



Western blot - Anti-PDE3A antibody, prediluted (ab125676)

**All lanes** : Anti-PDE3A antibody (ab125676) at 1/2000 dilution

**Lane 1** : COS cell lysate, non-transfected

**Lane 2** : COS cell lysate, transfected with Human PDE1A3

**Lane 3** : COS cell lysate, transfected with Human PDE2A3

**Lane 4** : COS cell lysate, transfected with Human PDE3A

**Lane 5** : COS cell lysate, transfected with Human PDE3B

**Lane 6** : COS cell lysate, transfected with Human PDE4D2

**Lane 7** : COS cell lysate, transfected with Human PDE5A1

**Lane 8** : COS cell lysate, transfected with Human PDE5A3

**Lane 9** : COS cell lysate, transfected with Human PDE7A1

**Lane 10** : COS cell lysate, transfected with Human PDE8A1

**Lane 11** : COS cell lysate, transfected with Human PDE10A1

**Lane 12** : COS cell lysate, transfected with Human PDE11A1

**Predicted band size** : 125 kDa

**Please note:** All products are "FOR RESEARCH USE ONLY AND ARE NOT INTENDED FOR DIAGNOSTIC OR THERAPEUTIC USE"

## Our Abpromise to you: Quality guaranteed and expert technical support

- Replacement or refund for products not performing as stated on the datasheet

- Valid for 12 months from date of delivery
- Response to your inquiry within 24 hours
  
- We provide support in Chinese, English, French, German, Japanese and Spanish
- Extensive multi-media technical resources to help you
- We investigate all quality concerns to ensure our products perform to the highest standards

If the product does not perform as described on this datasheet, we will offer a refund or replacement. For full details of the Abpromise, please visit <http://www.abcam.co.jp/abpromise> or contact our technical team.

## **Terms and conditions**

---

- Guarantee only valid for products bought direct from Abcam or one of our authorized distributors