

Product datasheet

Anti-PAK1 antibody [EP795Y] ab40852

リコンビナント RabMAb®

9 References 画像数 4

製品の概要

製品名	Anti-PAK1 antibody [EP795Y]
製品の詳細	Rabbit monoclonal [EP795Y] to PAK1
アプリケーション	適用あり: Flow Cyt, IP, WB, IHC-P, ICC/IF
種交差性	交差種: Mouse, Rat, Human
免疫原	Synthetic peptide corresponding to residues in the N-terminus of human PAK1 protein.
特記事項	This product is a recombinant rabbit monoclonal antibody.

Alternative versions available:

[Anti-PAK1 antibody \(Alexa Fluor® 488\) \[EP795Y\] \(ab199088\)](#)

[Anti-PAK1 antibody \(HRP\) \[EP795Y\] \(ab199311\)](#)

Our RabMAb® technology is a patented hybridoma-based technology for making rabbit monoclonal antibodies. For details on our patents, please refer to [RabMAb® patents](#)

製品の特性

製品の状態	Liquid
保存方法	Shipped at 4°C. Store at 4°C (stable for up to 12 months). Upon delivery aliquot. Store at -20°C. Avoid freeze / thaw cycle.
バッファー	PBS 49%, Sodium azide 0.01%, Glycerol 50%, BSA 0.05%
精製度	Tissue culture supernatant
特記事項 (精製)	This product has not been purified.
ポリ/モノ	モノクローナル
クローン名	EP795Y
アイソタイプ	IgG

アプリケーション

Our [Abpromise guarantee](#) covers the use of **ab40852** in the following tested applications.

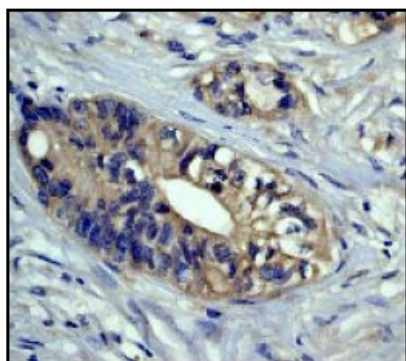
The application notes include recommended starting dilutions; optimal dilutions/concentrations should be determined by the end user.

アプリケーション	Abreviews	特記事項
Flow Cyt		1/10. ab172730 - Rabbit monoclonal IgG, is suitable for use as an isotype control with this antibody.
IP		1/50.
WB		1/500. Predicted molecular weight: 66 kDa.
IHC-P		Use at an assay dependent concentration.
ICC/IF		1/50 - 1/100.

ターゲット情報

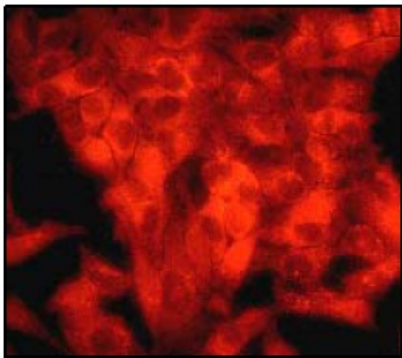
機能	The activated kinase acts on a variety of targets. Likely to be the GTPase effector that links the Rho-related GTPases to the JNK MAP kinase pathway. Activated by CDC42 and RAC1. Involved in dissolution of stress fibers and reorganization of focal complexes. Involved in regulation of microtubule biogenesis through phosphorylation of TBCB. Activity is inhibited in cells undergoing apoptosis, potentially due to binding of CDC2L1 and CDC2L2.
配列類似性	Belongs to the protein kinase superfamily, STE Ser/Thr protein kinase family, STE20 subfamily. Contains 1 CRIB domain. Contains 1 protein kinase domain.
翻訳後修飾	Autophosphorylated when activated by CDC42/p21 and RAC1.
細胞内局在	Cytoplasm. Cell junction > focal adhesion. Recruited to focal adhesions upon activation.

画像



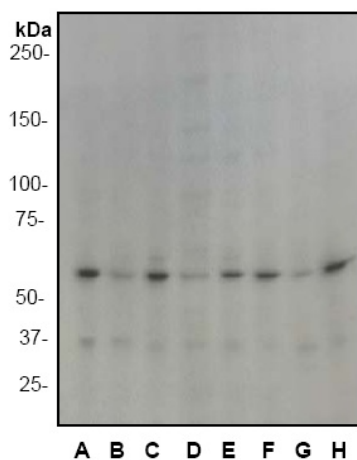
Immunohistochemical analysis of paraffin-embedded human breast carcinoma using [ab40852](#).

Immunohistochemistry (Formalin/PFA-fixed paraffin-embedded sections) - Anti-PAK1 antibody [EP795Y] ([ab40852](#))



Immunofluorescent staining of HeLa cells using ab40852.

Immunocytochemistry/ Immunofluorescence - PAK1 antibody [EP795Y] (ab40852)



Predicted band size : 66 kDa

Observed band size : 66 kDa

Western blot analysis of anti- PAK1 (N-term) ab40852, dilution 1:500

A: 10ug Hela

B: 10ug A431

C: 10ug Jurkat

D: 10ug K562

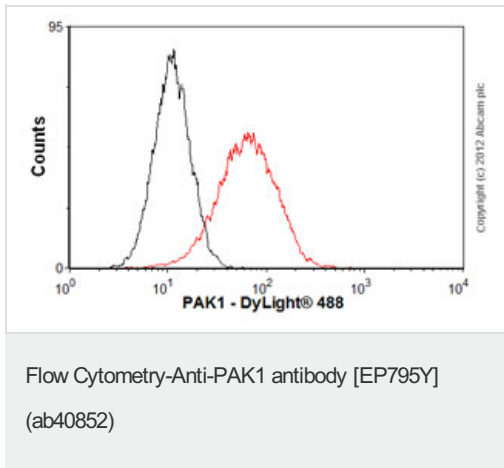
E: 10ug MCF7

F: 10ug Daudi

G: 10ug NIH 3T3

H: 10ug PC12

Western blot - PAK1 antibody [EP795Y] (ab40852)



Overlay histogram showing HeLa cells stained with ab40852 (red line). The cells were fixed with 4% paraformaldehyde (10 min) and then permeabilized with 0.1% PBS-Tween for 20 min. The cells were then incubated in 1x PBS / 10% normal goat serum / 0.3M glycine to block non-specific protein-protein interactions followed by the antibody (ab40852, 1/50 dilution) for 30 min at 22°C. The secondary antibody used was DyLight® 488 goat anti-rabbit IgG (H+L) (ab96899) at 1/500 dilution for 30 min at 22°C. Isotype control antibody (black line) was rabbit IgG (monoclonal) (1µg/1x10⁶ cells) used under the same conditions. Acquisition of >5,000 events was performed. This antibody gave a positive signal in HeLa cells fixed with 80% methanol (5 min)/permeabilized with 0.1% PBS-Tween for 20 min used under the same conditions.

Please note: All products are "FOR RESEARCH USE ONLY AND ARE NOT INTENDED FOR DIAGNOSTIC OR THERAPEUTIC USE"

Our Abpromise to you: Quality guaranteed and expert technical support

- Replacement or refund for products not performing as stated on the datasheet
- Valid for 12 months from date of delivery
- Response to your inquiry within 24 hours
- We provide support in Chinese, English, French, German, Japanese and Spanish
- Extensive multi-media technical resources to help you
- We investigate all quality concerns to ensure our products perform to the highest standards

If the product does not perform as described on this datasheet, we will offer a refund or replacement. For full details of the Abpromise, please visit <http://www.abcam.co.jp/abpromise> or contact our technical team.

Terms and conditions

- Guarantee only valid for products bought direct from Abcam or one of our authorized distributors