

Product datasheet

Anti-OR6Q1 antibody ab123441

画像数 1

製品の概要

製品名	Anti-OR6Q1 antibody
製品の詳細	Rabbit polyclonal to OR6Q1
アプリケーション	適用あり: WB
種交差性	交差種: Human
免疫原	Synthetic peptide conjugated to KLH, corresponding to a region within C-terminal amino acids 278-307 of Human OR6Q1 (NP_001005186.2).
ポジティブ・コントロール	K562 cell line lysate

製品の特性

製品の状態	Liquid
保存方法	Shipped at 4°C. Store at 4°C (up to 6 months). Store at -20°C long term.
バッファー	Preservative: 0.09% Sodium azide Constituent: 99% PBS
精製度	Immunogen affinity purified
特記事項 (精製)	ab123441 was purified through a Protein A column, followed by peptide affinity purification.
ポリ/モノ	ポリクローナル
アイソタイプ	IgG

アプリケーション

Our [Abpromise guarantee](#) covers the use of **ab123441** in the following tested applications.

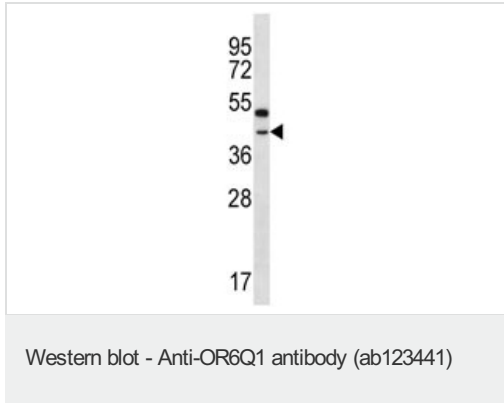
The application notes include recommended starting dilutions; optimal dilutions/concentrations should be determined by the end user.

アプリケーション	Abreviews	特記事項
WB		1/100 - 1/500. Predicted molecular weight: 36 kDa.

ターゲット情報

機能	Odorant receptor.
配列類似性	Belongs to the G-protein coupled receptor 1 family.
細胞内局在	Cell membrane.

画像



Anti-OR6Q1 antibody (ab123441) at 1/100 dilution + K562 cell line lysate at 35 µg

Predicted band size : 36 kDa

Please note: All products are "FOR RESEARCH USE ONLY AND ARE NOT INTENDED FOR DIAGNOSTIC OR THERAPEUTIC USE"

Our Abpromise to you: Quality guaranteed and expert technical support

- Replacement or refund for products not performing as stated on the datasheet
- Valid for 12 months from date of delivery
- Response to your inquiry within 24 hours
- We provide support in Chinese, English, French, German, Japanese and Spanish
- Extensive multi-media technical resources to help you
- We investigate all quality concerns to ensure our products perform to the highest standards

If the product does not perform as described on this datasheet, we will offer a refund or replacement. For full details of the Abpromise, please visit <http://www.abcam.co.jp/abpromise> or contact our technical team.

Terms and conditions

- Guarantee only valid for products bought direct from Abcam or one of our authorized distributors