


Product datasheet

Anti-OLFM4 antibody ab85046

2 Abreviews 7 References 画像数 3

製品の概要

製品名	Anti-OLFM4 antibody
製品の詳細	Rabbit polyclonal to OLFM4
由来種	Rabbit
アプリケーション	適用あり: ICC/IF, IHC-P, WB
種交差性	交差種: Human 交差が予測される動物種: Mouse 
免疫原	Synthetic peptide conjugated to KLH derived from within residues 450 to the C-terminus of Human OLFM4. Immunogen の所有権に関して (Peptide available as ab98247 .)
ポジティブ・コントロール	In Western Blot, ab85046 gave a positive signal in Human liver tissue lysate. In IHC, this antibody gave a positive signal in a Formalin-Fixed Paraffin-Embedded Human Prostate tissue section. In IF, this antibody gave a positive signal in T84 cell line.

製品の特性

製品の状態	Liquid
保存方法	Shipped at 4°C. Store at +4°C short term (1-2 weeks). Upon delivery aliquot. Store at -20°C or -80°C. Avoid freeze / thaw cycle.
バッファー	pH: 7.40 Constituent: PBS Batches of this product that have a concentration < 1mg/ml may have BSA added as a stabilising agent. If you would like information about the formulation of a specific lot, please contact our scientific support team who will be happy to help.
精製度	Immunogen affinity purified
ポリモノ	ポリクローナル
アイソタイプ	IgG

アプリケーション

Our [Abpromise guarantee](#) covers the use of **ab85046** in the following tested applications.

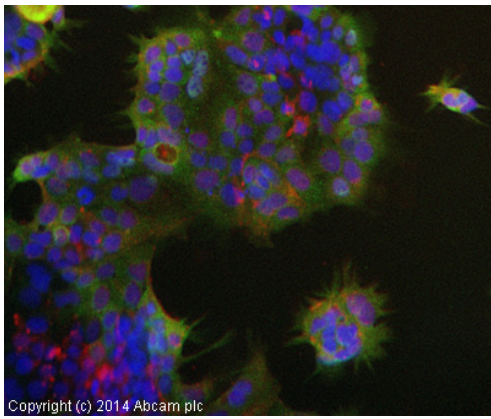
The application notes include recommended starting dilutions; optimal dilutions/concentrations should be determined by the end user.

アプリケーション	Abreviews	特記事項
ICC/IF		Use a concentration of 5 µg/ml.
IHC-P		Use a concentration of 5 µg/ml. Perform heat mediated antigen retrieval before commencing with IHC staining protocol.
WB		Use a concentration of 1 µg/ml. Detects a band of approximately 54 kDa (predicted molecular weight: 57 kDa).

ターゲット情報

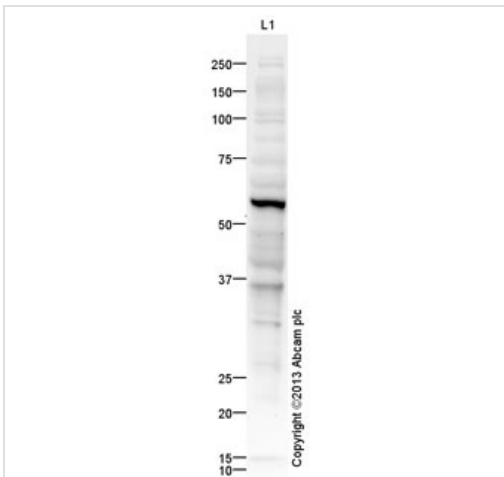
機能	An antiapoptotic factor that promotes tumor growth. Promotes proliferation of pancreatic cancer cells by favoring the transition from the S to G2/M phase. Facilitates cell adhesion.
組織特異性	Expressed during myeloid lineage development. Strongly expressed in the prostate, small intestine and colon and moderately expressed in the bone marrow and stomach. Highly expressed in pancreatic cancer tissues and shows an elevated expression level during the early S phase of the cell cycle. Also expressed at high levels in stomach cancer and colon cancer tissues.
配列類似性	Contains 1 olfactomedin-like domain.
ドメイン	The olfactomedin-like domain is involved in the interaction with cadherin.
翻訳後修飾	N-glycosylated.
細胞内局在	Secreted > extracellular space. According to PubMed:15059901, found in mitochondrion and nucleus.

画像



Immunocytochemistry/ Immunofluorescence - Anti-OLFM4 antibody (ab85046)

ab85046 stained T84 cells. The cells were 4% formaldehyde fixed for 10 minutes at room temperature and then incubated in 1%BSA / 10% normal goat serum / 0.3M glycine in 0.1% PBS-Tween for 1hour at room temperature to permeabilise the cells and block non-specific protein-protein interactions. The cells were then incubated with the antibody (ab85046 at 5µg/ml) overnight at +4°C. The secondary antibody (pseudo-colored green) was Goat Anti-Rabbit IgG H&L (Alexa Fluor® 488) preadsorbed ([ab150081](#)) used at a 1/1000 dilution for 1hour at room temperature. Alexa Fluor® 594 WGA was used to label plasma membranes (pseudo-colored red) at a 1/200 dilution for 1hour at room temperature. DAPI was used to stain the cell nuclei (pseudo-colored blue) at a concentration of 1.43µM for 1hour at room temperature.



Western blot - Anti-OLFM4 antibody (ab85046)

Anti-OLFM4 antibody (ab85046) at 1 µg/ml + Human liver tissue lysate - total protein ([ab29889](#)) at 10 µg

Secondary

Goat Anti-Rabbit IgG H&L (HRP) ([ab97051](#)) at 1/10000 dilution

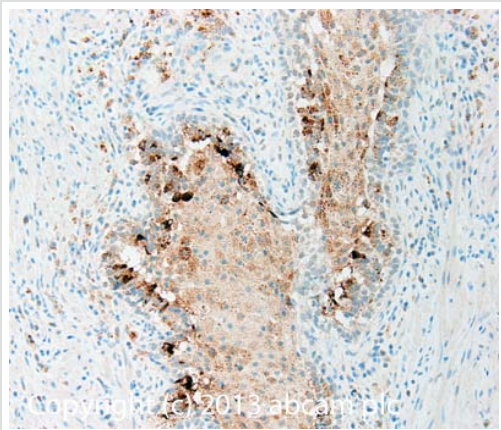
Developed using the ECL technique.

Performed under reducing conditions.

Predicted band size: 57 kDa

Observed band size: 57 kDa

Exposure time: 20 minutes



Immunohistochemistry (Formalin/PFA-fixed paraffin-embedded sections) - Anti-OLFM4 antibody (ab85046)

IHC image of OLFM4 staining in Human normal prostate formalin fixed paraffin embedded tissue section, performed on a Leica Bond™ system using the standard protocol F. The section was pre-treated using heat mediated antigen retrieval with sodium citrate buffer (pH6, epitope retrieval solution 1) for 20 mins. The section was then incubated with ab85046, 5µg/ml, for 15 mins at room temperature and detected using an HRP conjugated compact polymer system. DAB was used as the chromogen. The section was then counterstained with haematoxylin and mounted with DPX.

For other IHC staining systems (automated and non-automated) customers should optimize variable parameters such as antigen retrieval conditions, primary antibody concentration and antibody incubation times.

Please note: All products are "FOR RESEARCH USE ONLY AND ARE NOT INTENDED FOR DIAGNOSTIC OR THERAPEUTIC USE"

Our Abpromise to you: Quality guaranteed and expert technical support

- Replacement or refund for products not performing as stated on the datasheet
- Valid for 12 months from date of delivery
- Response to your inquiry within 24 hours
- We provide support in Chinese, English, French, German, Japanese and Spanish
- Extensive multi-media technical resources to help you
- We investigate all quality concerns to ensure our products perform to the highest standards

If the product does not perform as described on this datasheet, we will offer a refund or replacement. For full details of the Abpromise, please visit <http://www.abcam.co.jp/abpromise> or contact our technical team.

Terms and conditions

- Guarantee only valid for products bought direct from Abcam or one of our authorized distributors