


Product datasheet

Anti-Nrf2 antibody ab71890

★★★★☆ 1 Abreviews 1 References 画像数 2

製品の概要

製品名	Anti-Nrf2 antibody
製品の詳細	Rabbit polyclonal to Nrf2
アプリケーション	適用あり: IHC-P, WB, ICC/IF
種交差性	交差種: Human 交差が予測される動物種: Cow, Chimpanzee, Rhesus monkey, Gorilla, Orangutan 
免疫原	Synthetic peptide conjugated to KLH derived from within residues 100 - 200 of Human Nrf2.Immunogen の所有権に関して(Peptide available as <a href="#">ab71889</a> .)
ポジティブ・コントロール	This antibody gave a positive signal in the following Human Whole Cell Lysates: TE 671, Ramos, A498, Jurkat - Staurosporine Treated (24hr, 500nM), SK N SH

製品の特性

製品の状態	Liquid
保存方法	Shipped at 4°C. Store at +4°C short term (1-2 weeks). Upon delivery aliquot. Store at -20°C or -80°C. Avoid freeze / thaw cycle.
バッファー	Preservative: 0.02% Sodium Azide Constituents: 1% BSA, PBS, pH 7.4
精製度	Immunogen affinity purified
ポリモノ	ポリクローナル
アイソタイプ	IgG

アプリケーション

Our [Abpromise guarantee](#) covers the use of **ab71890** in the following tested applications.

The application notes include recommended starting dilutions; optimal dilutions/concentrations should be determined by the end user.

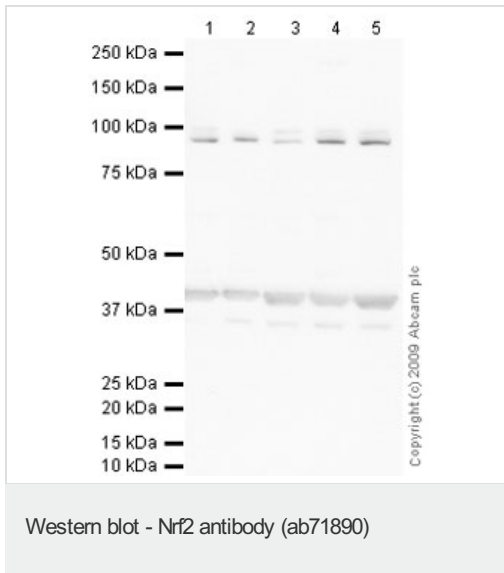
アプリケーション	Abreviews	特記事項
IHC-P	★★★★☆	Use at an assay dependent concentration.

アプリケーション	Abreviews	特記事項
WB		Use a concentration of 1 µg/ml. Detects a band of approximately 90 kDa (predicted molecular weight: 68 kDa). Can be blocked with <a href="#">Human Nrf2 peptide (ab71889)</a> .
ICC/IF		Use a concentration of 5 µg/ml.

## ターゲット情報

機能	Transcription activator that binds to antioxidant response (ARE) elements in the promoter regions of target genes. Important for the coordinated up-regulation of genes in response to oxidative stress. May be involved in the transcriptional activation of genes of the beta-globin cluster by mediating enhancer activity of hypersensitive site 2 of the beta-globin locus control region.
組織特異性	Widely expressed. Highest expression in adult muscle, kidney, lung, liver and in fetal muscle.
配列類似性	Belongs to the bZIP family. CNC subfamily. Contains 1 bZIP domain.
ドメイン	Acidic activation domain in the N-terminus, and DNA binding domain in the C-terminus.
翻訳後修飾	Phosphorylation of Ser-40 by PKC in response to oxidative stress dissociates NFE2L2 from its cytoplasmic inhibitor KEAP1, promoting its translocation into the nucleus.
細胞内局在	Cytoplasm > cytosol. Nucleus. Cytosolic under unstressed conditions, translocates into the nucleus upon induction by electrophilic agents.

## 画像



**All lanes** : Anti-Nrf2 antibody (ab71890) at 1  $\mu\text{g/ml}$

**Lane 1** : TE 671 (Human Rhabdomyosarcoma) Whole Cell Lysate

**Lane 2** : Ramos (Human Burkitt's lymphoma cell line) Whole Cell Lysate

**Lane 3** : A498 (Human Kidney Carcinoma) Whole Cell Lysate

**Lane 4** : Jurkat Whole Cell Lysate - Staurosporine Treated (24hr, 500nM)

**Lane 5** : SK N SH (Human neuroblastoma) Whole Cell Lysate

Lysates/proteins at 10  $\mu\text{g}$  per lane.

### Secondary

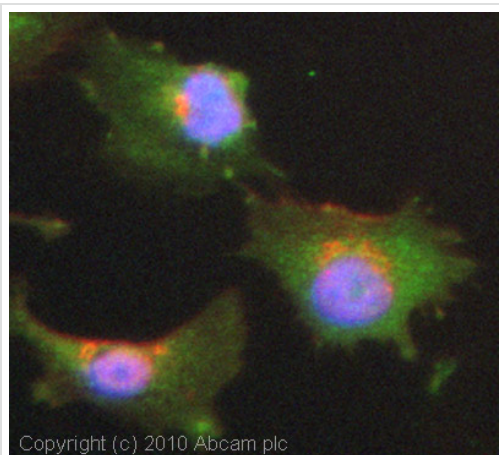
Goat polyclonal to Rabbit IgG - H&L - Pre-Adsorbed (HRP) at 1/3000 dilution

Performed under reducing conditions.

**Predicted band size** : 68 kDa

**Observed band size** : 90 kDa

**Additional bands at** : 40 kDa. We are unsure as to the identity of these extra bands.



Immunocytochemistry/ Immunofluorescence - Nrf2 antibody (ab71890)

ICC/IF image of ab71890 stained HeLa cells. The cells were 4% PFA fixed (10 min) and then incubated in 1%BSA / 10% normal goat serum / 0.3M glycine in 0.1% PBS-Tween for 1h to permeabilise the cells and block non-specific protein-protein interactions. The cells were then incubated with the antibody (ab71890, 5µg/ml) overnight at +4°C. The secondary antibody (green) was Alexa Fluor® 488 goat anti-rabbit IgG (H+L) used at a 1/1000 dilution for 1h. Alexa Fluor® 594 WGA was used to label plasma membranes (red) at a 1/200 dilution for 1h. DAPI was used to stain the cell nuclei (blue) at a concentration of 1.43µM. This antibody also gave a positive result in 4% PFA fixed (10 min) MCF7 cells at 5µg/ml.

**Please note:** All products are "FOR RESEARCH USE ONLY AND ARE NOT INTENDED FOR DIAGNOSTIC OR THERAPEUTIC USE"

### Our Abpromise to you: Quality guaranteed and expert technical support

- Replacement or refund for products not performing as stated on the datasheet
- Valid for 12 months from date of delivery
- Response to your inquiry within 24 hours
- We provide support in Chinese, English, French, German, Japanese and Spanish
- Extensive multi-media technical resources to help you
- We investigate all quality concerns to ensure our products perform to the highest standards

If the product does not perform as described on this datasheet, we will offer a refund or replacement. For full details of the Abpromise, please visit <http://www.abcam.co.jp/abpromise> or contact our technical team.

### Terms and conditions

- Guarantee only valid for products bought direct from Abcam or one of our authorized distributors