


Product datasheet

Anti-NSL1 antibody ab96728

画像数 2

製品の概要

製品名	Anti-NSL1 antibody
製品の詳細	Rabbit polyclonal to NSL1
アプリケーション	適用あり: WB, ICC/IF
種交差性	交差種: Human 交差が予測される動物種: Cow 
免疫原	Recombinant fragment, corresponding to a region within amino acids 1-245 of Human NSL1 (NP_056286).
ポジティブ・コントロール	A431, H1299, HeLaS3, HepG2 whole cell lysate for WB. HeLa cells for IF.

法規制情報

医薬用外毒物

製品の特性

製品の状態	Liquid
保存方法	Shipped at 4°C. Upon delivery aliquot and store at -20°C or -80°C. Avoid repeated freeze / thaw cycles.
バッファー	Preservative: 0.01% Thimerosal (merthiolate) Constituents: 10% Glycerol, 0.1M Tris, 0.1M Glycine, pH 7.0
精製度	Immunogen affinity purified
ポリ/モノ	ポリクローナル
アイソタイプ	IgG

アプリケーション

Our [Abpromise guarantee](#) covers the use of **ab96728** in the following tested applications.

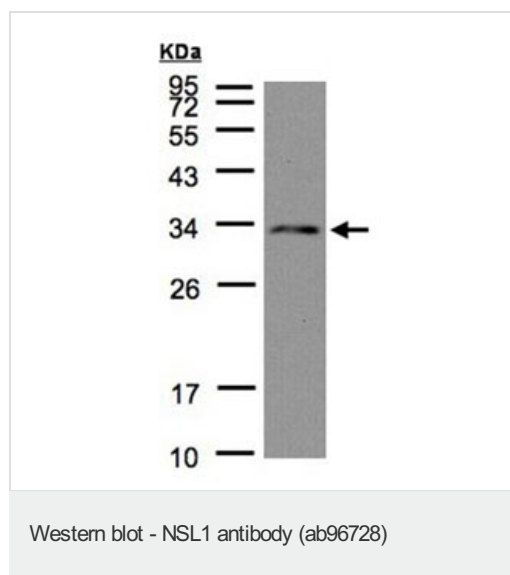
The application notes include recommended starting dilutions; optimal dilutions/concentrations should be determined by the end user.

アプリケーション	Abreviews	特記事項
WB		1/500 - 1/3000. Predicted molecular weight: 32 kDa.
ICC/IF		1/100 - 1/200.

ターゲット情報

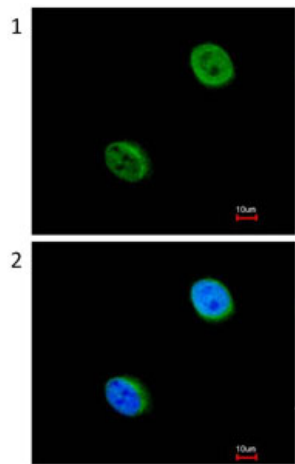
機能	Part of the MIS12 complex which is required for normal chromosome alignment and segregation and kinetochore formation during mitosis.
翻訳後修飾	Phosphorylated upon DNA damage, probably by ATM or ATR.
細胞内局在	Nucleus. Chromosome > centromere > kinetochore. Associated with the kinetochore.

画像



Anti-NSL1 antibody (ab96728) at 1/1000 dilution + HepG2 whole cell lysate at 30 µg

Predicted band size : 32 kDa



Immunofluorescence analysis of paraformaldehyde-fixed HeLa cells, using ab96728 at 1/200 dilution (image 1) and merged with DNA probe (image 2).

Immunocytochemistry/ Immunofluorescence - NSL1 antibody (ab96728)

Please note: All products are "FOR RESEARCH USE ONLY AND ARE NOT INTENDED FOR DIAGNOSTIC OR THERAPEUTIC USE"

Our Abpromise to you: Quality guaranteed and expert technical support

- Replacement or refund for products not performing as stated on the datasheet
- Valid for 12 months from date of delivery
- Response to your inquiry within 24 hours
- We provide support in Chinese, English, French, German, Japanese and Spanish
- Extensive multi-media technical resources to help you
- We investigate all quality concerns to ensure our products perform to the highest standards

If the product does not perform as described on this datasheet, we will offer a refund or replacement. For full details of the Abpromise, please visit <http://www.abcam.co.jp/abpromise> or contact our technical team.

Terms and conditions

- Guarantee only valid for products bought direct from Abcam or one of our authorized distributors