


Product datasheet

Anti-NOL6 antibody ab50875

画像数 2

製品の概要

製品名	Anti-NOL6 antibody
製品の詳細	Rabbit polyclonal to NOL6
由来種	Rabbit
特異性	This antibody reacts with NOL6
アプリケーション	適用あり: ELISA, WB, IHC-P
種交差性	交差種: Human 交差が予測される動物種: Mouse, Rat, Cow 
免疫原	A region within synthetic peptide: VIGVLWKPTS FQPQPFKASS TKGRMVMSRG GELVMVPNVE AILEDFAVLG, corresponding to C terminal amino acids 1081-1130 of Human NOL6 Run BLAST with ExPASy Run BLAST with NCBI
ポジティブ・コントロール	HepG2 cell lysate

製品の特性

製品の状態	Liquid
保存方法	Shipped at 4°C. Upon delivery aliquot and store at -20°C. Avoid freeze / thaw cycles.
バッファー	Preservative: None Constituents: 2% Sucrose, PBS
精製度	Protein A purified
ポリ/モノ	ポリクローナル
アイソタイプ	IgG

アプリケーション

Our [Abpromise guarantee](#) covers the use of **ab50875** in the following tested applications.

The application notes include recommended starting dilutions; optimal dilutions/concentrations should be determined by the end user.

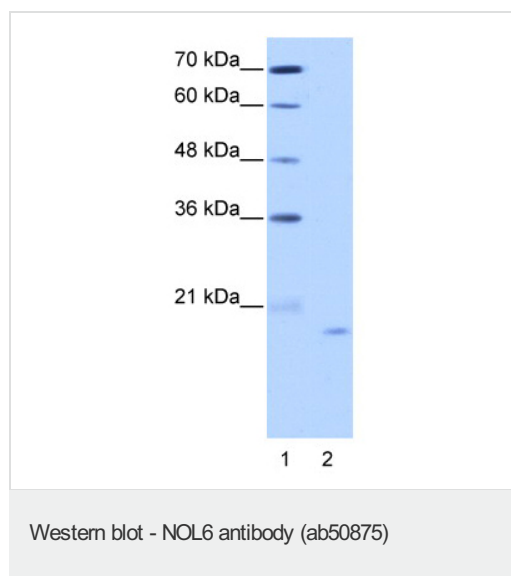
アプリケーション	Abreviews	特記事項
ELISA		Use at an assay dependent concentration. ELISA titre using peptide based assay: 1:1562500.
WB		Use a concentration of 2.5 µg/ml. Predicted molecular weight: 22 , 128 kDa. Good results were obtained when blocked with 5% non-fat dry milk in 0.05% PBS-T.
IHC-P		Use a concentration of 16 µg/ml.

ターゲット情報

関連性 NOL6 is a nucleolar RNA associated protein that is highly conserved between species. RNase treatment of permeabilized cells indicates that the nucleolar localization is RNA dependent. Further studies suggest that the protein is associated with ribosome biogenesis through an interaction with pre-rRNA primary transcripts.

細胞内局在 Nucleus; nucleolus. Localizes to condensed chromosomes in mitosis

画像



Lane 2 : Anti-NOL6 antibody (ab50875) at 2.5 µg/ml

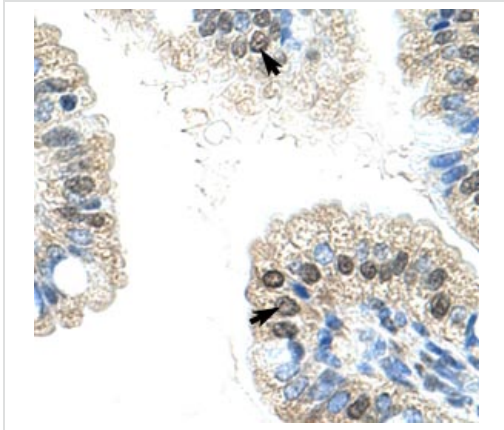
Lane 1 : MARKER

Lane 2 : HepG2 cell lysate at 10 µg

Secondary

Lane 2 : HRP conjugated anti-Rabbit IgG at 1/50000 dilution

Predicted band size: 22 , 128 kDa



ab50875 at 16 μ g/ml staining NOL6 in human epithelial cells of intestinal villus.

Immunohistochemistry (Paraffin-embedded sections)
- NOL6 antibody (ab50875)

Please note: All products are "FOR RESEARCH USE ONLY AND ARE NOT INTENDED FOR DIAGNOSTIC OR THERAPEUTIC USE"

Our Abpromise to you: Quality guaranteed and expert technical support

- Replacement or refund for products not performing as stated on the datasheet
- Valid for 12 months from date of delivery
- Response to your inquiry within 24 hours
- We provide support in Chinese, English, French, German, Japanese and Spanish
- Extensive multi-media technical resources to help you
- We investigate all quality concerns to ensure our products perform to the highest standards

If the product does not perform as described on this datasheet, we will offer a refund or replacement. For full details of the Abpromise, please visit <http://www.abcam.co.jp/abpromise> or contact our technical team.

Terms and conditions

- Guarantee only valid for products bought direct from Abcam or one of our authorized distributors