

Product datasheet

Anti-NEDD8 antibody ab38634

1 Abreviews 1 References 画像数 2

製品の概要

| | |
|--------------|---|
| 製品名 | Anti-NEDD8 antibody |
| 製品の詳細 | Rabbit polyclonal to NEDD8 |
| アプリケーション | 適用あり: ELISA, WB, IHC-P |
| 種交差性 | 交差種: Human |
| 免疫原 | KLH-conjugated synthetic peptide selected within aa 1-100 of human NEDD8. |
| ポジティブ・コントロール | HeLa cell lysates and human hepatocarcinoma tissue. |

製品の特性

| | |
|----------|--|
| 製品の状態 | Liquid |
| 保存方法 | Shipped at 4°C. Store at +4°C short term (1-2 weeks). Upon delivery aliquot. Store at -20°C long term. |
| バッファー | Preservative: 0.09% None Constituents: PBS |
| 精製度 | Protein G purified |
| 特記事項(精製) | This antibody is purified through a protein G column and eluted out with both high and low pH buffers and neutralized immediately after elution then followed by dialysis against PBS. |
| ポリ/モノ | ポリクローナル |
| アイソタイプ | IgG |

アプリケーション

Our [Abpromise guarantee](#) covers the use of **ab38634** in the following tested applications.

The application notes include recommended starting dilutions; optimal dilutions/concentrations should be determined by the end user.

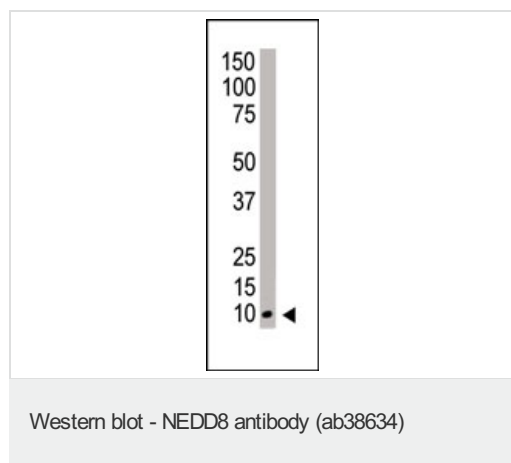
| アプリケーション | Abreviews | 特記事項 |
|----------|-----------|---|
| ELISA | | 1/1000. |
| WB | | 1/100 - 1/500. Predicted molecular weight: 9 kDa. |

| アプリケーション | Abreviews | 特記事項 |
|----------|-----------|---------------|
| IHC-P | | 1/50 - 1/100. |

ターゲット情報

| | |
|-------|---|
| 機能 | Ubiquitin-like protein which plays an important role in cell cycle control and embryogenesis. Covalent attachment to its substrates requires prior activation by the E1 complex UBE1C-APPBP1 and linkage to the E2 enzyme UBE2M. Attachment of NEDD8 to cullins activates their associated E3 ubiquitin ligase activity, and thus promotes polyubiquitination and proteasomal degradation of cyclins and other regulatory proteins. |
| 組織特異性 | Highly expressed in heart, skeletal muscle, spleen, thymus, prostate, testis, ovary, colon and leukocytes. |
| 配列類似性 | Belongs to the ubiquitin family. |
| 翻訳後修飾 | Cleavage of precursor form by UCHL3 or SENP8 is necessary for function. |
| 細胞内局在 | Nucleus. Mainly nuclear. |

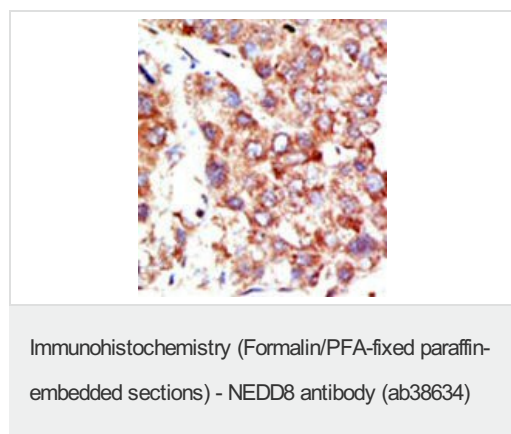
画像



Anti-NEDD8 antibody (ab38634) at 1/100 dilution + HeLa cell lysates

Predicted band size : 9 kDa

Observed band size : 10 kDa



Formalin-fixed and paraffin-embedded human hepatocarcinoma tissue reacted with the primary antibody, which was peroxidase-conjugated to the secondary antibody, followed by AEC staining. This data demonstrates the use of this antibody for immunohistochemistry; clinical relevance has not been evaluated.

Please note: All products are "FOR RESEARCH USE ONLY AND ARE NOT INTENDED FOR DIAGNOSTIC OR THERAPEUTIC USE"

Our Abpromise to you: Quality guaranteed and expert technical support

- Replacement or refund for products not performing as stated on the datasheet
- Valid for 12 months from date of delivery
- Response to your inquiry within 24 hours

- We provide support in Chinese, English, French, German, Japanese and Spanish
- Extensive multi-media technical resources to help you
- We investigate all quality concerns to ensure our products perform to the highest standards

If the product does not perform as described on this datasheet, we will offer a refund or replacement. For full details of the Abpromise, please visit <http://www.abcam.co.jp/abpromise> or contact our technical team.

Terms and conditions

- Guarantee only valid for products bought direct from Abcam or one of our authorized distributors