


Product datasheet

Anti-NASP antibody ab104233

画像数 2

製品の概要

製品名	Anti-NASP antibody
製品の詳細	Rabbit polyclonal to NASP
由来種	Rabbit
アプリケーション	適用あり: WB, ICC/IF
種交差性	交差種: Human 交差が予測される動物種: Horse, Macaque monkey 
免疫原	Synthetic peptide conjugated to KLH derived from within residues 300 - 400 of Human NASP. Immunogen の所有権に関して
ポジティブ・コントロール	This antibody gave a positive signal in Human Testis tissue lysate as well as the following whole cell lysates: HeLa; HEK293; U20S and HeLa Nuclear extract.

製品の特性

製品の状態	Liquid
保存方法	Shipped at 4°C. Store at +4°C short term (1-2 weeks). Upon delivery aliquot. Store at -20°C or -80°C. Avoid freeze / thaw cycle.
バッファー	pH: 7.40 Preservative: 0.02% Sodium azide Constituent: PBS Note: Batches of this product that have a concentration < 1mg/ml may have BSA added as a stabilising agent. If you would like information about the formulation of a specific lot, please contact our scientific support team who will be happy to help.
精製度	Immunogen affinity purified
ポリ/モノ	ポリクローナル
アイソタイプ	IgG

アプリケーション

Our [Abpromise guarantee](#) covers the use of **ab104233** in the following tested applications.

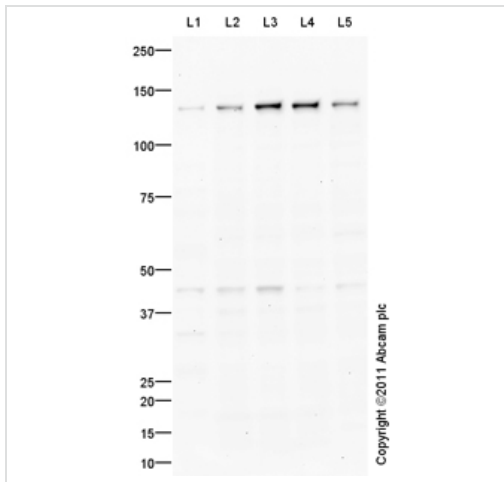
The application notes include recommended starting dilutions; optimal dilutions/concentrations should be determined by the end user.

アプリケーション	Abreviews	特記事項
WB		Use a concentration of 1 µg/ml. Detects a band of approximately 138 kDa (predicted molecular weight: 85 kDa).
ICC/IF		Use a concentration of 5 µg/ml.

ターゲット情報

機能	Required for DNA replication, normal cell cycle progression and cell proliferation. Forms a cytoplasmic complex with HSP90 and H1 linker histones and stimulates HSP90 ATPase activity. NASP and H1 histone are subsequently released from the complex and translocate to the nucleus where the histone is released for binding to DNA.
組織特異性	Isoform 1 is testis- and sperm-specific.
配列類似性	Belongs to the NASP family. Contains 3 TPR repeats.
翻訳後修飾	Phosphorylated upon DNA damage, probably by ATM or ATR.
細胞内局在	Cytoplasm. Nucleus.

画像



Western blot - Anti-NASP antibody (ab104233)

All lanes : Anti-NASP antibody (ab104233) at 1 µg/ml

Lane 1 : Human testis tissue lysate - total protein ([ab30257](#))

Lane 2 : HeLa (Human epithelial carcinoma cell line) Whole Cell Lysate

Lane 3 : HEK293 (Human embryonic kidney cell line) Whole Cell Lysate

Lane 4 : U2OS (Human osteosarcoma cell line) Whole Cell Lysate

Lane 5 : HeLa (Human epithelial carcinoma cell line) Nuclear Lysate

Lysates/proteins at 10 µg per lane.

Secondary

All lanes : Goat Anti-Rabbit IgG H&L (HRP) preadsorbed ([ab97080](#)) at 1/5000 dilution

Developed using the ECL technique.

Performed under reducing conditions.

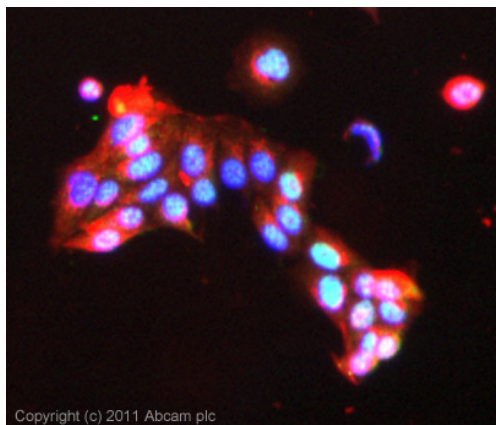
Predicted band size: 85 kDa

Observed band size: 138 kDa

Additional bands at: 45 kDa. We are unsure as to the identity of these extra bands.

Exposure time: 20 minutes

We hypothesize that the band observed at 138 kDa is representative of testicular NASP (tNASP) which also has an expected molecular weight of 138 kDa. Abcam welcomes customer feedback and would appreciate any comments regarding this product and the data presented above.



Immunohistochemistry (Formalin/PFA-fixed paraffin-embedded sections) - Anti-NASP antibody (ab104233)

ICC/IF image of ab104233 stained MCF7 cells. The cells were 100% methanol fixed (5 min) and then incubated in 1%BSA / 10% normal goat serum / 0.3M glycine in 0.1% PBS-Tween for 1h to permeabilise the cells and block non-specific protein-protein interactions. The cells were then incubated with the antibody (ab104233, 5µg/ml) overnight at +4°C. The secondary antibody (green) was ab96899, DyLight® 488 goat anti-rabbit IgG (H+L) used at a 1/250 dilution for 1h. Alexa Fluor® 594 WGA was used to label plasma membranes (red) at a 1/200 dilution for 1h. DAPI was used to stain the cell nuclei (blue) at a concentration of 1.43µM. This antibody also gave a positive result in 100% methanol fixed (10 min) HeLa, Hek293 and HepG2 cells at Xµg/ml.

Please note: All products are "FOR RESEARCH USE ONLY AND ARE NOT INTENDED FOR DIAGNOSTIC OR THERAPEUTIC USE"

Our Abpromise to you: Quality guaranteed and expert technical support

- Replacement or refund for products not performing as stated on the datasheet
- Valid for 12 months from date of delivery
- Response to your inquiry within 24 hours
- We provide support in Chinese, English, French, German, Japanese and Spanish
- Extensive multi-media technical resources to help you
- We investigate all quality concerns to ensure our products perform to the highest standards

If the product does not perform as described on this datasheet, we will offer a refund or replacement. For full details of the Abpromise, please visit <http://www.abcam.co.jp/abpromise> or contact our technical team.

Terms and conditions

- Guarantee only valid for products bought direct from Abcam or one of our authorized distributors