


Product datasheet

Anti-Mitofusin 2 antibody ab50843

★★★★☆ 5 Abreviews 2 References 画像数 2

製品の概要

| | |
|--------------|---|
| 製品名 | Anti-Mitofusin 2 antibody |
| 製品の詳細 | Rabbit polyclonal to Mitofusin 2 |
| アプリケーション | 適用あり: ICC/IF, WB, IP |
| 種交差性 | 交差種: Mouse, Rat, Human 交差が予測される動物種: Cynomolgus monkey, Orangutan  |
| 免疫原 | Synthetic peptide corresponding to Human Mitofusin 2 aa 557-576 conjugated to Keyhole Limpet Haemocyanin (KLH). Sequence: C-LGPKNSRRALMGYNDQVQRP Run BLAST with Run BLAST with |
| ポジティブ・コントロール | Mouse brain mitochondrial extract; rat brain mitochondrial extract; HeLa cell lysate |

製品の特性

| | |
|--------|--|
| 製品の状態 | Liquid |
| 保存方法 | Shipped at 4°C. Store at +4°C short term (1-2 weeks). Upon delivery aliquot. Store at -20°C or -80°C. Avoid freeze / thaw cycle. |
| バッファー | Preservative: 15mM Sodium Azide Constituents: 0.01M PBS, pH 7.4 |
| 精製度 | Immunogen affinity purified |
| ポリ/モノ | ポリクローナル |
| アイソタイプ | IgG |

アプリケーション

Our [Abpromise guarantee](#) covers the use of **ab50843** in the following tested applications.

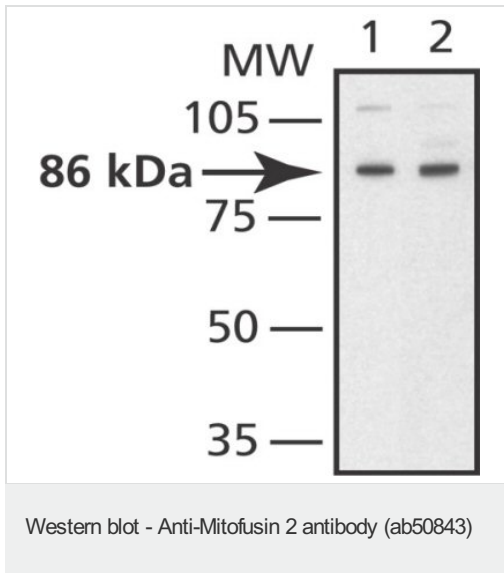
The application notes include recommended starting dilutions; optimal dilutions/concentrations should be determined by the end user.

| アプリケーション | Abreviews | 特記事項 |
|----------|-----------|--|
| ICC/IF | ★★★★★ | 1/200. |
| WB | ★★★★☆ | Use a concentration of 0.5 - 1 µg/ml. Detects a band of approximately 86 kDa (predicted molecular weight: 84 kDa). |
| IP | ★★★★★ | Use at 5-10 µg/mg of lysate. (using HeLa cell lysate) |

ターゲット情報

| | |
|-------|--|
| 機能 | Essential transmembrane GTPase, which mediates mitochondrial fusion. Fusion of mitochondria occurs in many cell types and constitutes an important step in mitochondria morphology, which is balanced between fusion and fission. MFN2 acts independently of the cytoskeleton. It therefore plays a central role in mitochondrial metabolism and may be associated with obesity and/or apoptosis processes. Overexpression induces the formation of mitochondrial networks. Plays an important role in the regulation of vascular smooth muscle cell proliferation. Involved in the clearance of damaged mitochondria via selective autophagy (mitophagy). Is required for PARK2 recruitment to dysfunctional mitochondria. Involved in the control of unfolded protein response (UPR) upon ER stress including activation of apoptosis and autophagy during ER stress. Acts as an upstream regulator of EIF2AK3 and suppresses EIF2AK3 activation under basal conditions. |
| 組織特異性 | Ubiquitous; expressed at low level. Highly expressed in heart and kidney. |
| 関連疾患 | Charcot-Marie-Tooth disease 2A2 Neuropathy, hereditary motor and sensory, 6A |
| 配列類似性 | Belongs to the TRAFAC class dynamin-like GTPase superfamily. Dynammin/Fzo/YdjA family. Mitofusin subfamily. Contains 1 dynamin-type G (guanine nucleotide-binding) domain. |
| 翻訳後修飾 | Phosphorylated by PINK1. Ubiquitinated by non-degradative ubiquitin by PARK2, promoting mitochondrial fusion; deubiquitination by USP30 inhibits mitochondrial fusion. |
| 細胞内局在 | Mitochondrion outer membrane. Colocalizes with BAX during apoptosis. |

画像



All lanes : Anti-Mitofusin 2 antibody (ab50843) at 0.25 µg/ml

Lane 1 : Rat brain mitochondria

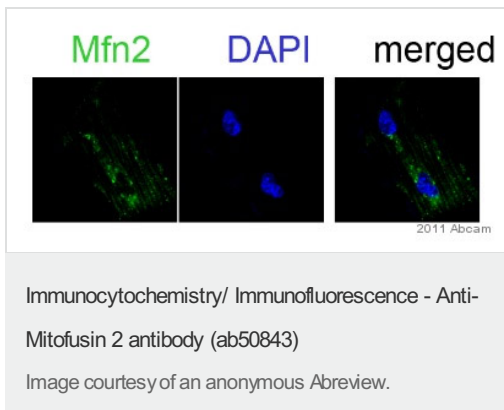
Lane 2 : Mouse brain mitochondria

Secondary

Goat Anti-Rabbit IgG, Peroxidase conjugate and a chemiluminescent substrate.

Predicted band size : 84 kDa

Observed band size : 86 kDa



ab50843 staining Mitofusin 2 in murine cardiac myocyte cells by Immunocytochemistry/ Immunofluorescence. Cells were fixed in formaldehyde, permeabilized using 1% Triton X-100, blocked with 10% serum for 1 hour at room temperature, then incubated with ab50843 at a 1/200 dilution for 1 hour. The secondary used was an Alexa-Fluor 488 conjugated goat anti-rabbit polyclonal used at a 1/500 dilution.

Please note: All products are "FOR RESEARCH USE ONLY AND ARE NOT INTENDED FOR DIAGNOSTIC OR THERAPEUTIC USE"

Our Abpromise to you: Quality guaranteed and expert technical support

- Replacement or refund for products not performing as stated on the datasheet
- Valid for 12 months from date of delivery
- Response to your inquiry within 24 hours
- We provide support in Chinese, English, French, German, Japanese and Spanish
- Extensive multi-media technical resources to help you
- We investigate all quality concerns to ensure our products perform to the highest standards

If the product does not perform as described on this datasheet, we will offer a refund or replacement. For full details of the Abpromise, please visit <http://www.abcam.co.jp/abpromise> or contact our technical team.

Terms and conditions

- Guarantee only valid for products bought direct from Abcam or one of our authorized distributors