

Product datasheet

Anti-Methionine Sulfoxide Reductase A antibody ab16803

★★★★☆ 1 Abreviews 7 References 画像数 2

製品の概要

| | |
|--------------|--|
| 製品名 | Anti-Methionine Sulfoxide Reductase A antibody |
| 製品の詳細 | Rabbit polyclonal to Methionine Sulfoxide Reductase A |
| アプリケーション | 適用あり: ELISA, WB, IHC-P |
| 種交差性 | 交差種: Mouse, Rat, Cow, Human 交差が予測される動物種: Macaque monkey |
| 免疫原 | Recombinant full length protein (Human). |
| ポジティブ・コントロール | Mouse kidney extract. |

製品の特性

| | |
|--------|---|
| 製品の状態 | Liquid |
| 保存方法 | Shipped at 4°C. Upon delivery aliquot and store at -20°C. Avoid freeze / thaw cycles. |
| バッファー | Preservative: 0.03% Sodium Azide Constituents: 50% Glycerol, 0.01% BSA, HEPES, 0.15M Sodium chloride |
| ポリ/モノ | ポリクローナル |
| アイソタイプ | IgG |

アプリケーション

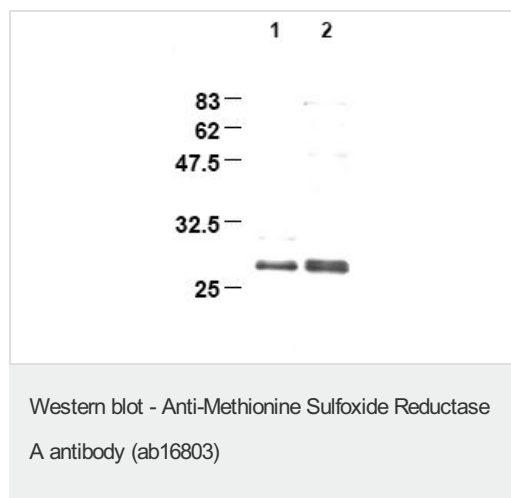
Our [Abpromise guarantee](#) covers the use of **ab16803** in the following tested applications.

The application notes include recommended starting dilutions; optimal dilutions/concentrations should be determined by the end user.

| アプリケーション | Abreviews | 特記事項 |
|----------|-----------|---|
| ELISA | | Use at an assay dependent concentration. |
| WB | ★★★★☆ | 1/2000. Predicted molecular weight: 26 kDa. |
| IHC-P | | Use a concentration of 1 µg/ml. |

| | |
|--------------|--|
| 機能 | Has an important function as a repair enzyme for proteins that have been inactivated by oxidation. Catalyzes the reversible oxidation-reduction of methionine sulfoxide in proteins to methionine. |
| 組織特異性 | Ubiquitous. Highest expression in adult kidney and cerebellum, followed by liver, heart ventricles, bone marrow and hippocampus. |
| 配列類似性 | Belongs to the MsrA Met sulfoxide reductase family. |
| 細胞内局在 | Cytoplasm; Cytoplasm. Nucleus and Mitochondrion. |

画像



All lanes : Anti-Methionine Sulfoxide Reductase A antibody (ab16803)

Lane 1 : Mouse Kidney

Lane 2 : Rat Kidney

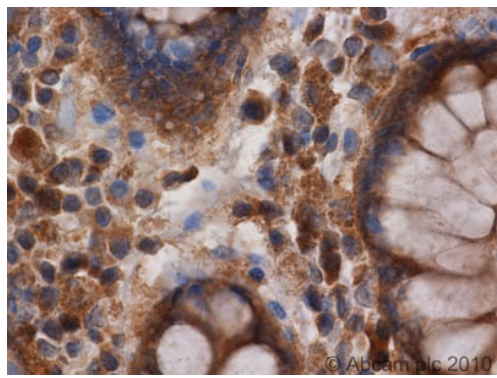
Predicted band size : 26 kDa

Observed band size : 27 kDa

Western blot using ab16803 at 1/2000.

Lane 1: Mouse kidney

Lane 2: Rat kidney



Immunohistochemistry (Formalin/PFA-fixed paraffin-embedded sections) - Anti-Methionine Sulfoxide Reductase A antibody (ab16803)

ab16803 (1 μ g/ml) staining Methionine Sulfoxide Reductase A in human colon using an automated system (DAKO Autostainer Plus). Using this protocol there is strong staining of nuclear/cytoplasmic compartment of the intestinal glands cells.

Sections were rehydrated and antigen retrieved with the Dako 3 in 1 AR buffer EDTA pH 9.0 in a DAKO PT link. Slides were peroxidase blocked in 3% H₂O₂ in methanol for 10 mins. They were then blocked with Dako Protein block for 10 minutes (containing casein 0.25% in PBS) then incubated with primary antibody for 20 min and detected with Dako envision flex amplification kit for 30 minutes. Colorimetric detection was completed with Diaminobenzidine for 5 minutes. Slides were counterstained with Haematoxylin and coverslipped under DePeX. Please note that, for manual staining, optimization of primary antibody concentration and incubation time is recommended. Signal amplification may be required.

Please note: All products are "FOR RESEARCH USE ONLY AND ARE NOT INTENDED FOR DIAGNOSTIC OR THERAPEUTIC USE"

Our Abpromise to you: Quality guaranteed and expert technical support

- Replacement or refund for products not performing as stated on the datasheet
- Valid for 12 months from date of delivery
- Response to your inquiry within 24 hours
- We provide support in Chinese, English, French, German, Japanese and Spanish
- Extensive multi-media technical resources to help you
- We investigate all quality concerns to ensure our products perform to the highest standards

If the product does not perform as described on this datasheet, we will offer a refund or replacement. For full details of the Abpromise, please visit <http://www.abcam.co.jp/abpromise> or contact our technical team.

Terms and conditions

- Guarantee only valid for products bought direct from Abcam or one of our authorized distributors