

Product datasheet

Anti-MUC16 antibody [X75] ab10029

画像数 2

製品の概要

| | |
|----------|--|
| 製品名 | Anti-MUC16 antibody [X75] |
| 製品の詳細 | Mouse monoclonal [X75] to MUC16 |
| 特異性 | Epitope specificity group B (ISOBM classification). |
| アプリケーション | 適用あり: WB, Flow Cyt, ELISA, ICC/IF |
| 種交差性 | 交差種: Human |
| 免疫原 | Full length native protein (purified from human ovarian carcinoma). |
| 特記事項 | Concentration varies from lot to lot and can be provided on request. |

製品の特性

| | |
|----------|--|
| 製品の状態 | Liquid |
| 保存方法 | Shipped at 4°C. Upon delivery aliquot and store at -20°C. Avoid freeze / thaw cycles. |
| バッファー | Preservative: 0.05% Sodium Azide Constituents: 0.15M Sodium Chloride, 10mM Tris. pH 7.5 |
| 精製度 | IgG fraction |
| 特記事項(精製) | Purity tested by electrophoresis. |
| ポリ/モノ | モノクローナル |
| クローン名 | X75 |
| ミエローマ | Sp2/0 |
| アイソタイプ | IgG1 |

アプリケーション

Our [Abpromise guarantee](#) covers the use of **ab10029** in the following tested applications.

The application notes include recommended starting dilutions; optimal dilutions/concentrations should be determined by the end user.

| アプリケーション | Abreviews | 特記事項 |
|----------|-----------|------|
|----------|-----------|------|

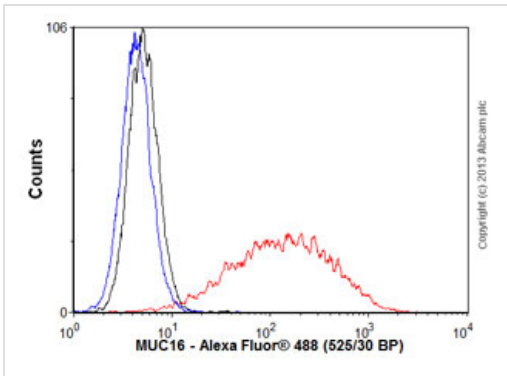
| | |
|----|--|
| WB | Use at an assay dependent concentration. Predicted molecular weight: 1000 kDa. |
|----|--|

| アプリケーション | Abreviews | 特記事項 |
|----------|-----------|--|
| Flow Cyt | | Use 0.1 µg for 10 ⁶ cells. ab170190 -Mouse monoclonal IgG1, is suitable for use as an isotype control with this antibody. |
| ELISA | | Use at an assay dependent concentration. |
| ICC/IF | | Use a concentration of 1 - 5 µg/ml. |

ターゲット情報

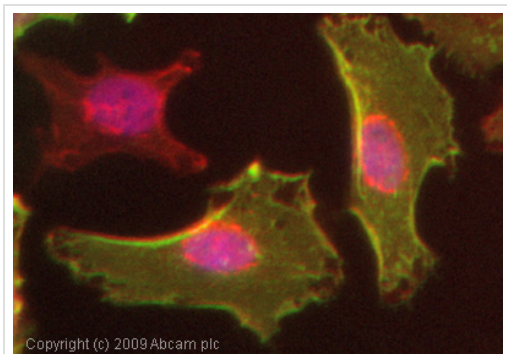
| | |
|-------|---|
| 機能 | Thought to provide a protective, lubricating barrier against particles and infectious agents at mucosal surfaces. |
| 組織特異性 | Expressed in corneal and conjunctival epithelia (at protein level). Overexpressed in ovarian carcinomas and ovarian low malignant potential (LMP) tumors as compared to the expression in normal ovarian tissue and ovarian adenomas. |
| 配列類似性 | Contains 2 ANK repeats. Contains 56 SEA domains. |
| ドメイン | Composed of three domains, a Ser-, Thr-rich N-terminal domain, a repeated domain containing more than 60 partially conserved tandem repeats of 156 amino acids each (AAs 12061-21862) and a C-terminal transmembrane contain domain with a short cytoplasmic tail. |
| 翻訳後修飾 | Heavily O-glycosylated; expresses both type 1 and type 2 core glycans. Heavily N-glycosylated; expresses primarily high mannose and complex bisecting type N-linked glycans. May be phosphorylated. Phosphorylation of the intracellular C-terminal domain may induce proteolytic cleavage and the liberation of the extracellular domain into the extracellular space. May contain numerous disulfide bridges. Association of several molecules of the secreted form may occur through interchain disulfide bridges providing an extraordinarily large gel-like matrix in the extracellular space or in the lumen of secretory ducts. |
| 細胞内局在 | Cell membrane. Secreted > extracellular space. May be liberated into the extracellular space following the phosphorylation of the intracellular C-terminus which induces the proteolytic cleavage and liberation of the extracellular domain. |

Anti-MUC16 antibody [X75] 画像



Flow Cytometry - Anti-MUC16 antibody [X75] (ab10029)

Overlay histogram showing HeLa cells stained with ab10029 (red line). The cells were fixed with 80% methanol (5 min) and then permeabilized with 0.1% PBS-Tween for 20 min. The cells were then incubated in 1x PBS / 10% normal goat serum / 0.3M glycine to block non-specific protein-protein interactions followed by the antibody (ab462, 0.1µg/1x10⁶ cells) for 30 min at 22°C. The secondary antibody used was Alexa Fluor® 488 goat anti-mouse IgG (H&L) (ab150113) at 1/2000 dilution for 30 min at 22°C. Isotype control antibody (black line) was mouse IgG1 [ICIGG1] (ab91353, 1µg/1x10⁶ cells) used under the same conditions. Unlabelled sample (blue line) was also used as a control. Acquisition of >5,000 events were collected using a 20mW Argon ion laser (488nm) and 525/30 bandpass filter. This antibody gave a positive signal in HeLa cells fixed with 4% paraformaldehyde (10 min)/permeabilized with 0.1% PBS-Tween for 20 min used under the same conditions.



Immunocytochemistry/ Immunofluorescence - MUC16 antibody [X75] (ab10029)

ICC/IF image of ab10029 stained HeLa cells. The cells were 4% PFA fixed (10 min) and then incubated in 1%BSA / 10% normal goat serum / 0.3M glycine in 0.1% PBS-Tween for 1h to permeabilise the cells and block non-specific protein-protein interactions. The cells were then incubated with the antibody (ab10029, 1µg/ml) overnight at +4°C. The secondary antibody (green) was Alexa Fluor® 488 goat anti-mouse IgG (H+L) used at a 1/1000 dilution for 1h. Alexa Fluor® 594 WGA was used to label plasma membranes (red) at a 1/200 dilution for 1h. DAPI was used to stain the cell nuclei (blue) at a concentration of 1.43µM.

Please note: All products are "FOR RESEARCH USE ONLY AND ARE NOT INTENDED FOR DIAGNOSTIC OR THERAPEUTIC USE"

Our Abpromise to you: Quality guaranteed and expert technical support

- Replacement or refund for products not performing as stated on the datasheet
- Valid for 12 months from date of delivery
- Response to your inquiry within 24 hours

- We provide support in Chinese, English, French, German, Japanese and Spanish
- Extensive multi-media technical resources to help you
- We investigate all quality concerns to ensure our products perform to the highest standards

If the product does not perform as described on this datasheet, we will offer a refund or replacement. For full details of the Abpromise, please visit <http://www.abcam.co.jp/abpromise> or contact our technical team.

Terms and conditions

- Guarantee only valid for products bought direct from Abcam or one of our authorized distributors