

Product datasheet

Anti-MTX2 antibody ab83015

画像数 2

製品の概要

製品名	Anti-MTX2 antibody
製品の詳細	Rabbit polyclonal to MTX2
由来種	Rabbit
アプリケーション	適用あり: WB, ELISA, IHC-P
種交差性	交差種: Human 交差が予測される動物種: Mouse, Rat, Rabbit, Horse, Guinea pig, Cow, Cat, Dog, Pig
免疫原	Synthetic peptide corresponding to a region within N terminal amino acids 2-51 (YAAEPWPEN ATLYQQLKGE QILLSDNAAS LAVQAFLQMC NLPIKVVVCRA) of human MTX2 (NP_001006636). Run BLAST with ExPASy Run BLAST with NCBI
ポジティブ・コントロール	Jurkat cell lysate

製品の特性

製品の状態	Liquid
保存方法	Shipped at 4°C. Upon delivery aliquot and store at -20°C. Avoid repeated freeze / thaw cycles.
バッファー	Preservative: None Constituents: 2% Sucrose, PBS
精製度	Immunogen affinity purified
特記事項(精製)	Purified by peptide affinity chromatography method.
ポリ/モノ	ポリクローナル
アイソタイプ	IgG

アプリケーション

Our [Abpromise guarantee](#) covers the use of **ab83015** in the following tested applications.

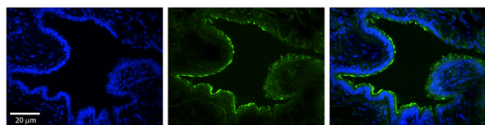
The application notes include recommended starting dilutions; optimal dilutions/concentrations should be determined by the end user.

アプリケーション	Abreviews	特記事項
WB		Use a concentration of 1 µg/ml. Predicted molecular weight: 29 kDa. Good results were obtained when blocked with 5% non-fat dry milk in 0.05% PBS-T.
ELISA		Use at an assay dependent concentration. ELISA titre using peptide based assay, 1:12500.
IHC-P		1/100.

ターゲット情報

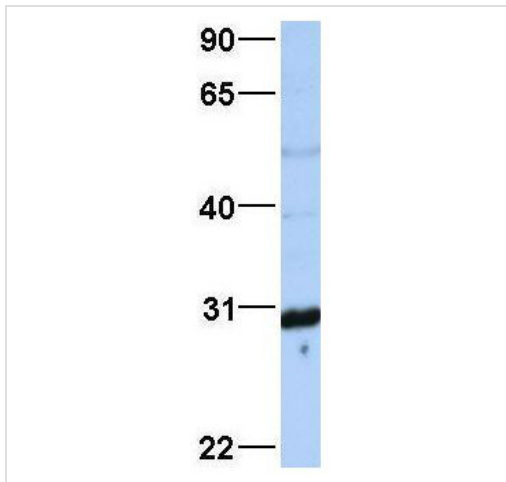
機能	Involved in transport of proteins into the mitochondrion.
配列類似性	Belongs to the metaxin family.
細胞内局在	Mitochondrion outer membrane.

画像



Immunohistochemistry (Formalin/PFA-fixed paraffin-embedded sections) - Anti-MTX2 antibody (ab83015)

Immunohistochemistry (Formalin/PFA-fixed paraffin-embedded sections) analysis of human bronchial epithelial tissue labelling MTX2 with ab83015 at 1/100. A Cy3-conjugated donkey anti-rabbit IgG (1/200) was used as the secondary antibody. Positive staining shown in the cytoplasm. Magnification: 20X. Exposure time: 0.5 - 2.0 seconds. Left - DAPI. Middle - MTX2. Right - Merge.



Western blot analysis of Jurkat cell lysate labeling MTX2 with ab83015 at 1.0µg/ml.

Western blot - Anti-MTX2 antibody (ab83015)

Please note: All products are "FOR RESEARCH USE ONLY AND ARE NOT INTENDED FOR DIAGNOSTIC OR THERAPEUTIC USE"

Our Abpromise to you: Quality guaranteed and expert technical support

- Replacement or refund for products not performing as stated on the datasheet
- Valid for 12 months from date of delivery
- Response to your inquiry within 24 hours
- We provide support in Chinese, English, French, German, Japanese and Spanish
- Extensive multi-media technical resources to help you
- We investigate all quality concerns to ensure our products perform to the highest standards

If the product does not perform as described on this datasheet, we will offer a refund or replacement. For full details of the Abpromise, please visit <http://www.abcam.co.jp/abpromise> or contact our technical team.

Terms and conditions

- Guarantee only valid for products bought direct from Abcam or one of our authorized distributors