


Product datasheet

Anti-MTGR1 antibody ab96161

1 References 画像数 2

製品の概要

製品名	Anti-MTGR1 antibody
製品の詳細	Rabbit polyclonal to MTGR1
アプリケーション	適用あり: WB, ICC/IF
種交差性	交差種: Human 交差が予測される動物種: Mouse, Rat 
免疫原	Recombinant protein fragment corresponding to a region within amino acids 401 and 598 of Human MTGR1.
ポジティブ・コントロール	293T, A431, H1299, HeLa, HepG2, Molt-4, Raji cell lysate. HeLa cells for IF.

法規制情報

医薬用外毒物

製品の特性

製品の状態	Liquid
保存方法	Shipped at 4°C. Upon delivery aliquot and store at -20°C or -80°C. Avoid repeated freeze / thaw cycles.
バッファー	Preservative: 0.01% Thimerosal (merthiolate) Constituents: 10% Glycerol, 0.1M Tris, 0.1M Glycine, pH 7
精製度	Immunogen affinity purified
ポリ/モノ	ポリクローナル
アイソタイプ	IgG

アプリケーション

Our [Abpromise guarantee](#) covers the use of **ab96161** in the following tested applications.

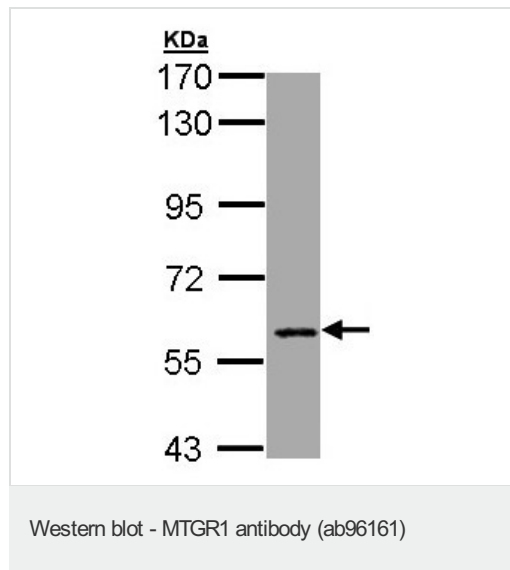
The application notes include recommended starting dilutions; optimal dilutions/concentrations should be determined by the end user.

アプリケーション	Abreviews	特記事項
WB		1/500 - 1/3000. Predicted molecular weight: 67 kDa.
ICC/IF		1/100 - 1/200.

ターゲット情報

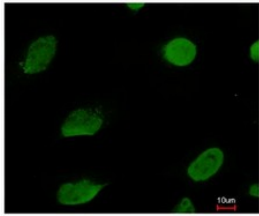
機能	May function as a complex with the chimeric protein RUNX1/AML1-CBFA2T1/MTG8 which is produced in acute myeloid leukemia with the chromosomal translocation t(8;21). May thus be involved in the repression of AML1-dependent transcription and the induction of G-CSF/CSF3-dependent cell growth. May be a tumor suppressor gene candidate involved in myeloid tumors with the deletion of the 20q11 region.
組織特異性	Ubiquitously expressed in fetal and adult tissues. Highly expressed in adult brain, heart, lung, kidney, lymph node, appendix, thymus, testis, uterus, small intestine, prostate and thymus.
配列類似性	Belongs to the CBFA2T family. Contains 1 MYND-type zinc finger. Contains 1 TAFH (NHR1) domain.
細胞内局在	Nucleus.

画像



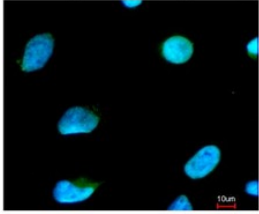
Anti-MTGR1 antibody (ab96161) at 1/1000 dilution + HepG2 whole cell lysate at 30 µg

Predicted band size : 67 kDa



Top panel: immunofluorescence analysis of paraformaldehyde-fixed HeLa cells, using ab96161 at 1/200 dilution.

Bottom panel: image merged with DNA probe.



Immunocytochemistry/ Immunofluorescence -
MTGR1 antibody (ab96161)

Please note: All products are "FOR RESEARCH USE ONLY AND ARE NOT INTENDED FOR DIAGNOSTIC OR THERAPEUTIC USE"

Our Abpromise to you: Quality guaranteed and expert technical support

- Replacement or refund for products not performing as stated on the datasheet
- Valid for 12 months from date of delivery
- Response to your inquiry within 24 hours
- We provide support in Chinese, English, French, German, Japanese and Spanish
- Extensive multi-media technical resources to help you
- We investigate all quality concerns to ensure our products perform to the highest standards

If the product does not perform as described on this datasheet, we will offer a refund or replacement. For full details of the Abpromise, please visit <http://www.abcam.co.jp/abpromise> or contact our technical team.

Terms and conditions

- Guarantee only valid for products bought direct from Abcam or one of our authorized distributors