

Product datasheet

Anti-MRP1 antibody [MRPr1] ab3368

★★★★☆ 2 Abreviews 6 References 画像数 2

製品の概要

製品名	Anti-MRP1 antibody [MRPr1]
製品の詳細	Rat monoclonal [MRPr1] to MRP1
由来種	Rat
特異性	This antibody detects MRP 1. It does not cross-react with the human MDR 1 and MDR 3 P glycoprotein gene products.
アプリケーション	適用あり: IHC-P, WB, IHC-Fr, ICC/IF
種交差性	交差種: Human
免疫原	Bacterial fusion protein of human MRP 1 containing a segment of 168 amino acids in the amino-proximal half of the protein.
エピトープ	Internal epitope.
ポジティブ・コントロール	Cell Lines: Drug-sensitive parental cell lines and their multidrug-resistant derivatives. Tissue section: Breast carcinoma

製品の特性

製品の状態	Liquid
保存方法	Shipped at 4°C. Store at +4°C short term (1-2 weeks). Store at -20°C or -80°C. Avoid freeze / thaw cycle.
バッファー	Constituent: 0.7% BSA
精製度	Tissue culture supernatant
ポリ/モノ	モノクローナル
クローン名	MRPr1
アイソタイプ	IgG2a

アプリケーション

Our [Abpromise guarantee](#) covers the use of **ab3368** in the following tested applications.

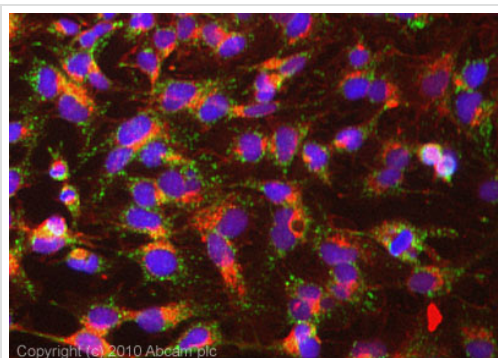
The application notes include recommended starting dilutions; optimal dilutions/concentrations should be determined by the end user.

アプリケーション	Abreviews	特記事項
IHC-P	★★★★☆	Use at an assay dependent concentration.
WB	★★★★☆	Use at an assay dependent concentration.
IHC-Fr		1/20 - 1/50.
ICC/IF		Use at an assay dependent concentration.

ターゲット情報

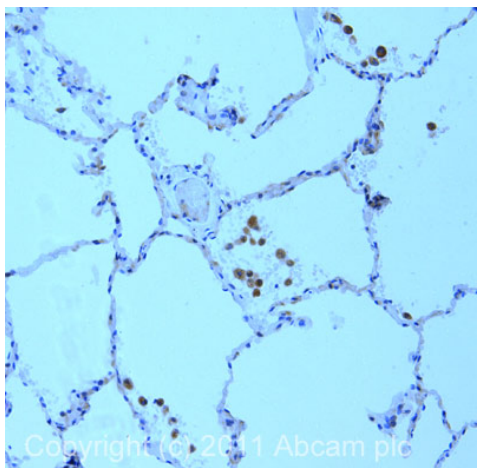
機能	Mediates export of organic anions and drugs from the cytoplasm. Mediates ATP-dependent transport of glutathione and glutathione conjugates, leukotriene C4, estradiol-17-beta-o-glucuronide, methotrexate, antiviral drugs and other xenobiotics. Confers resistance to anticancer drugs. Hydrolyzes ATP with low efficiency.
組織特異性	Lung, testis and peripheral blood mononuclear cells.
配列類似性	Belongs to the ABC transporter superfamily. ABCC family. Conjugate transporter (TC 3.A.1.208) subfamily. Contains 2 ABC transmembrane type-1 domains. Contains 2 ABC transporter domains.
細胞内局在	Cell membrane.

画像



Immunocytochemistry/ Immunofluorescence - Anti-MRP1 antibody [MRP1] (ab3368)

ICC/IF image of ab3368 stained HepG2 cells. The cells were 100% methanol fixed (5 min) and then incubated in 1%BSA / 10% normal goat serum / 0.3M glycine in 0.1% PBS-Tween for 1h to permeabilise the cells and block non-specific protein-protein interactions. The cells were then incubated with the antibody (ab3368,5µg/ml) overnight at +4°C. The secondary antibody (green) was Alexa Fluor® 488 goat anti-rat IgG (H+L) used at a 1/1000 dilution for 1h. Alexa Fluor® 594 WGA was used to label plasma membranes (red) at a 1/200 dilution for 1h. DAPI was used to stain the cell nuclei (blue) at a concentration of 1.43µM.



Immunohistochemistry (Formalin/PFA-fixed paraffin-embedded sections) - Anti-MRP1 antibody [MRPr1] (ab3368)

IHC image of ab3368 staining in human lung formalin fixed paraffin embedded tissue section, performed on a Leica Bond™ system using the standard protocol B. The section was pre-treated using heat mediated antigen retrieval with sodium citrate buffer (pH6, epitope retrieval solution 1) for 20 mins. The section was then incubated with ab3368, 1 µg/ml, for 15 mins at room temperature and detected using an HRP conjugated compact polymer system. DAB was used as the chromogen. The section was then counterstained with haematoxylin and mounted with DPX.

For other IHC staining systems (automated and non-automated) customers should optimize variable parameters such as antigen retrieval conditions, primary antibody concentration and antibody incubation times.

Please note: All products are "FOR RESEARCH USE ONLY AND ARE NOT INTENDED FOR DIAGNOSTIC OR THERAPEUTIC USE"

Our Abpromise to you: Quality guaranteed and expert technical support

- Replacement or refund for products not performing as stated on the datasheet
- Valid for 12 months from date of delivery
- Response to your inquiry within 24 hours
- We provide support in Chinese, English, French, German, Japanese and Spanish
- Extensive multi-media technical resources to help you
- We investigate all quality concerns to ensure our products perform to the highest standards

If the product does not perform as described on this datasheet, we will offer a refund or replacement. For full details of the Abpromise, please visit <http://www.abcam.co.jp/abpromise> or contact our technical team.

Terms and conditions

- Guarantee only valid for products bought direct from Abcam or one of our authorized distributors