

Product datasheet

Anti-MOX1 antibody ab23279

画像数 3

製品の概要

| | |
|--------------|--|
| 製品名 | Anti-MOX1 antibody |
| 製品の詳細 | Rabbit polyclonal to MOX1 |
| 由来種 | Rabbit |
| アプリケーション | 適用あり: WB, IHC-P |
| 種交差性 | 交差種: Human 交差が予測される動物種: Cow, Dog |
| 免疫原 | Synthetic peptide within Human MOX1 aa 38-87 (N terminal). The exact sequence is proprietary. Sequence: YPPTPFSFHQKPDFLATATAAYPDFSASCLAATPHSLPQEEHIFTEQHPA Database link: P50221 (Peptide available as ab199250) Run BLAST with Run BLAST with |
| ポジティブ・コントロール | Jurkat cell lysate. Human liver cells. Human stomach cells. |

製品の特性

| | |
|--------|---|
| 製品の状態 | Liquid |
| 保存方法 | Shipped at 4°C. Upon delivery aliquot and store at -20°C. Avoid freeze / thaw cycles. |
| バッファー | Preservative: None Constituents: 2% Sucrose, PBS |
| 精製度 | Immunogen affinity purified |
| ポリ/モノ | ポリクローナル |
| アイソタイプ | IgG |

アプリケーション

Our [Abpromise guarantee](#) covers the use of **ab23279** in the following tested applications.

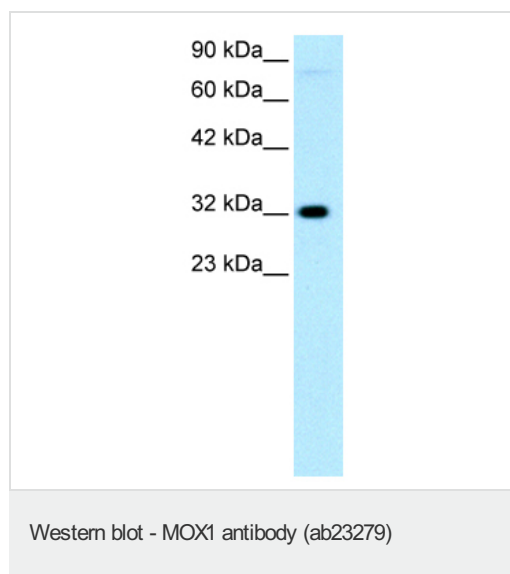
The application notes include recommended starting dilutions; optimal dilutions/concentrations should be determined by the end user.

| アプリケーション | Abreviews | 特記事項 |
|----------|-----------|---|
| WB | | Use a concentration of 0.2 - 2 µg/ml. Detects a band of approximately 32 kDa (predicted molecular weight: 28 kDa). Can be blocked with MOX1 peptide (ab199250) . Good results were obtained when blocked with 5% non-fat dry milk in 0.05% PBS-T. |
| IHC-P | | Use at an assay dependent concentration. |

ターゲット情報

| | |
|--------------|---|
| 機能 | Mesodermal transcription factor that plays a key role in somitogenesis and is specifically required for sclerotome development. Required for maintenance of the sclerotome polarity and formation of the cranio-cervical joints (PubMed:23290072, PubMed:24073994). Binds specifically to the promoter of target genes and regulates their expression. Activates expression of NKX3-2 in the sclerotome. Activates expression of CDKN1A and CDKN2A in endothelial cells, acting as a regulator of vascular cell proliferation. While it activates CDKN1A in a DNA-dependent manner, it activates CDKN2A in a DNA-independent manner. Required for hematopoietic stem cell (HSCs) induction via its role in somitogenesis: specification of HSCs occurs via the deployment of a specific endothelial precursor population, which arises within a sub-compartment of the somite named endotome. |
| 関連疾患 | Klippel-Feil syndrome 2, autosomal recessive |
| 配列類似性 | Contains 1 homeobox DNA-binding domain. |
| 細胞内局在 | Nucleus. Cytoplasm. Localizes predominantly in the nucleus. |

画像



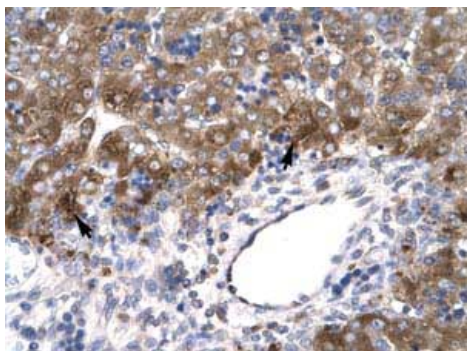
Anti-MOX1 antibody (ab23279) at 0.5 µg/ml + Jurkat cell lysate

Secondary

HRP conjugated anti-Rabbit IgG should be diluted in 1/50,000 - 100,000

Predicted band size: 28 kDa

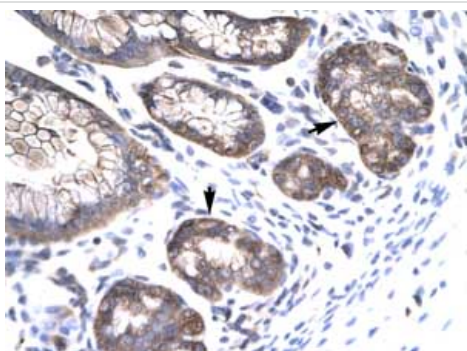
Observed band size: 32 kDa



Immunohistochemistry (Paraffin-embedded sections)

- MOX1 antibody (ab23279)

ab23279, at 4.0 - 8.0ug/ml staining human MOX1 in (human Liver) by Immunohistochemistry, Paraffin embedded tissue. Positive cells marked by arrows are hepatocytes. magnification 400 x.



Immunohistochemistry (Paraffin-embedded sections)

- MOX1 antibody (ab23279)

ab23279, at 4.0 - 8.0ug/ml dilution, staining human MOX1 in human stomach by Immunohistochemistry, Paraffin embedded tissue. Cells with positive staining, marked by arrows, are Epithelial cells of Fundic Gland. Magnification 400 x.

Please note: All products are "FOR RESEARCH USE ONLY AND ARE NOT INTENDED FOR DIAGNOSTIC OR THERAPEUTIC USE"

Our Abpromise to you: Quality guaranteed and expert technical support

- Replacement or refund for products not performing as stated on the datasheet
- Valid for 12 months from date of delivery
- Response to your inquiry within 24 hours
- We provide support in Chinese, English, French, German, Japanese and Spanish
- Extensive multi-media technical resources to help you
- We investigate all quality concerns to ensure our products perform to the highest standards

If the product does not perform as described on this datasheet, we will offer a refund or replacement. For full details of the Abpromise, please visit <http://www.abcam.co.jp/abpromise> or contact our technical team.

Terms and conditions

- Guarantee only valid for products bought direct from Abcam or one of our authorized distributors