


Product datasheet

Anti-MKS1 antibody ab101506

画像数 1

製品の概要

製品名	Anti-MKS1 antibody
製品の詳細	Rabbit polyclonal to MKS1
由来種	Rabbit
アプリケーション	適用あり: WB
種交差性	交差種: Human 交差が予測される動物種: Mouse, Rat, Cow 
免疫原	Recombinant fragment, corresponding to a region within amino acids 1-184 of Human MKS1 (AAH10061).
ポジティブ・コントロール	Jurkat whole cell lysate; A431 and Raji cell lysates

法規制情報

医薬用外毒物

製品の特性

製品の状態	Liquid
保存方法	Shipped at 4°C. Upon delivery aliquot. Store at -20°C or -80°C. Avoid freeze / thaw cycle.
バッファー	Preservative: 0.01% Thimerosal (merthiolate) Constituents: 20% Glycerol, 0.1M Tris, 0.1M Glycine, pH 7.0
精製度	Immunogen affinity purified
ポリ/モノ	ポリクローナル
アイソタイプ	IgG

アプリケーション

Our [Abpromise guarantee](#) covers the use of **ab101506** in the following tested applications.

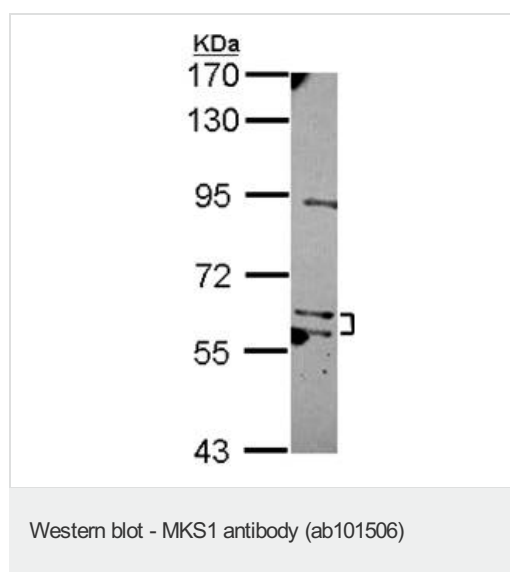
The application notes include recommended starting dilutions; optimal dilutions/concentrations should be determined by the end user.

アプリケーション	Abreviews	特記事項
WB		1/500 - 1/3000. Predicted molecular weight: 65 kDa.

ターゲット情報

機能	Component of the tectonic-like complex, a complex localized at the transition zone of primary cilia and acting as a barrier that prevents diffusion of transmembrane proteins between the cilia and plasma membranes. Involved in centrosome migration to the apical cell surface during early ciliogenesis. Required for ciliary structure and function, including a role in regulating length and appropriate number through modulating centrosome duplication. Required for cell branching morphology.
関連疾患	Meckel syndrome 1 Bardet-Biedl syndrome 13
配列類似性	Contains 1 B9 domain.
細胞内局在	Cytoplasm > cytoskeleton > cilium basal body. Cytoplasm > cytoskeleton > microtubule organizing center > centrosome. Localizes at the transition zone, a region between the basal body and the ciliary axoneme.

画像



Anti-MKS1 antibody (ab101506) at 1/2000 dilution + Jurkat whole cell lysate at 30 µg

Predicted band size: 65 kDa

10% SDS-PAGE

Please note: All products are "FOR RESEARCH USE ONLY AND ARE NOT INTENDED FOR DIAGNOSTIC OR THERAPEUTIC USE"

Our Abpromise to you: Quality guaranteed and expert technical support

- Replacement or refund for products not performing as stated on the datasheet
- Valid for 12 months from date of delivery
- Response to your inquiry within 24 hours
- We provide support in Chinese, English, French, German, Japanese and Spanish

- Extensive multi-media technical resources to help you
- We investigate all quality concerns to ensure our products perform to the highest standards

If the product does not perform as described on this datasheet, we will offer a refund or replacement. For full details of the Abpromise, please visit <http://www.abcam.co.jp/abpromise> or contact our technical team.

Terms and conditions

- Guarantee only valid for products bought direct from Abcam or one of our authorized distributors