


Product datasheet

Anti-MID2 antibody ab14749

画像数 2

製品の概要

製品名	Anti-MID2 antibody
製品の詳細	Goat polyclonal to MID2
アプリケーション	適用あり: IHC-P, ELISA, WB
種交差性	交差種: Mouse, Human 交差が予測される動物種: Monkey 
免疫原	Synthetic peptide: QESPYVSGMKTCH , corresponding to amino acids 703-715 of Human MID2. <a href="#">Run BLAST with</a> <a href="#">Run BLAST with</a>

製品の特性

製品の状態	Liquid
保存方法	Shipped at 4°C. Upon delivery aliquot and store at -20°C or -80°C. Avoid repeated freeze / thaw cycles.
バッファー	Preservative: 0.02% Sodium Azide Constituents: 0.5% BSA, Tris buffered saline
精製度	Immunogen affinity purified
特記事項 (精製)	Purified from goat serum by ammonium sulphate precipitation followed by antigen affinity chromatography using the immunizing peptide.
ポリモノ	ポリクローナル
アイソタイプ	IgG

アプリケーション

Our [Abpromise guarantee](#) covers the use of **ab14749** in the following tested applications.

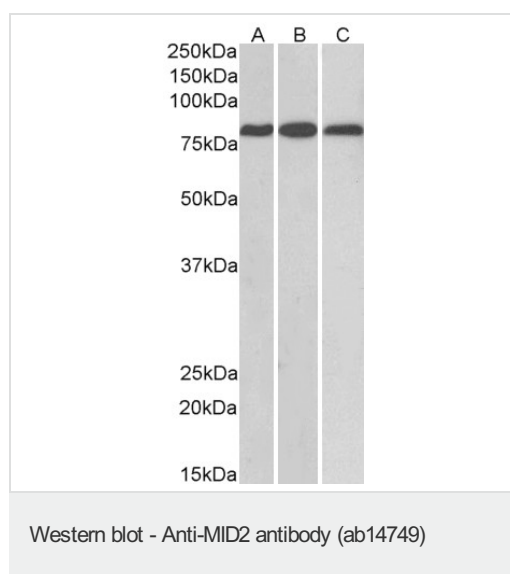
The application notes include recommended starting dilutions; optimal dilutions/concentrations should be determined by the end user.

アプリ ケーション	Abreviews	特記事項
IHC-P		Use a concentration of 5 - 10 µg/ml.
ELISA		Use at an assay dependent concentration.
WB		Use a concentration of 0.1 - 0.3 µg/ml. Predicted molecular weight: 81 kDa. Can be blocked with <a href="#">Human MID2 peptide (ab23250)</a> . Approx 80-85kDa band observed in Mouse and Rat Heart, and Rat Kidney lysates (calculated MW of 77.8kDa according to Mouse NP_035975.1 and 83.1kDa according to Rat NP_001178818.1).

## ターゲット情報

組織特異性	Low level in fetal kidney and lung, and in adult prostate, ovary and small intestine.
パスウェイ	Protein modification; protein ubiquitination.
配列類似性	Belongs to the TRIM/RBCC family. Contains 2 B box-type zinc fingers. Contains 1 B30.2/SPRY domain. Contains 1 COS domain. Contains 1 fibronectin type-III domain. Contains 1 RING-type zinc finger.
ドメイン	The tripartite motif (RBCC; RING- and B box-type zinc fingers and coiled coil domains) mediates dimerization. Associates with microtubules in a manner that is dependent on the C-terminal B30.2 domain.
翻訳後修飾	Phosphorylated on serine and threonine residues.
細胞内局在	Cytoplasm. Cytoplasm > cytoskeleton. Microtubule-associated.

## 画像



**All lanes** : Anti-MID2 antibody (ab14749) at 0.1 µg/ml

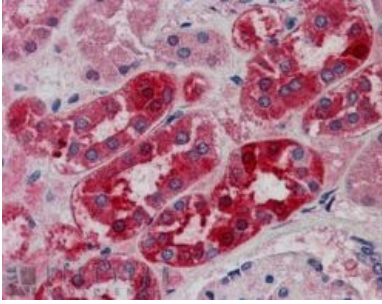
**Lane 1** : Mouse heart lysate

**Lane 2** : Rat heart lysate

**Lane 3** : Rat kidney lysate

Lysates/proteins at 35 µg per lane.

**Predicted band size** : 81 kDa



Immunohistochemistry (Formalin/PFA-fixed paraffin-embedded sections) - MID2 antibody (ab14749)

ab14749 at 5ug/ml staining MID2 in human kidney tissue section by Immunohistochemistry (Formalin/PFA fixed paraffin-embedded sections). Tissue underwent antigen retrieval in steam with citrate buffer (pH 6.0). The AP-staining procedure was used for detection.

**Please note:** All products are "FOR RESEARCH USE ONLY AND ARE NOT INTENDED FOR DIAGNOSTIC OR THERAPEUTIC USE"

### **Our Abpromise to you: Quality guaranteed and expert technical support**

- Replacement or refund for products not performing as stated on the datasheet
- Valid for 12 months from date of delivery
- Response to your inquiry within 24 hours
- We provide support in Chinese, English, French, German, Japanese and Spanish
- Extensive multi-media technical resources to help you
- We investigate all quality concerns to ensure our products perform to the highest standards

If the product does not perform as described on this datasheet, we will offer a refund or replacement. For full details of the Abpromise, please visit <http://www.abcam.co.jp/abpromise> or contact our technical team.

### **Terms and conditions**

- Guarantee only valid for products bought direct from Abcam or one of our authorized distributors