

Product datasheet

Anti-MHC class I + HLA B antibody [EP2624] ab110645

RabMAb[®]

画像数 2

製品の概要

製品名	Anti-MHC class I + HLA B antibody [EP2624]
製品の詳細	Rabbit monoclonal [EP2624] to MHC class I + HLA B
由来種	Rabbit
アプリケーション	適用あり: WB, IP 適用なし: Flow Cyt
種交差性	交差種: Human
免疫原	Synthetic peptide within Human HLA B. The exact sequence is proprietary.
ポジティブ・コントロール	Ramos, HL60, Jurkat and TF1 cell lysates Paraffin embedded Human tonsils
特記事項	Mouse, Rat: We have preliminary internal testing data to indicate this antibody may not react with these species. Please contact us for more information. Our RabMAb [®] technology is a patented hybridoma-based technology for making rabbit monoclonal antibodies. For details on our patents, please refer to RabMAb[®] patents

製品の特性

製品の状態	Liquid
保存方法	Shipped at 4°C. Store at -20°C. Stable for 12 months at -20°C.
バッファー	PBS 49%, Sodium azide 0.01%, Glycerol 50%, BSA 0.05%
精製度	Tissue culture supernatant
ポリ/モノ	モノクローナル
クローン名	EP2624
アイソタイプ	IgG

アプリケーション

Our [Abpromise guarantee](#) covers the use of **ab110645** in the following tested applications.

The application notes include recommended starting dilutions; optimal dilutions/concentrations should be determined by the end user.

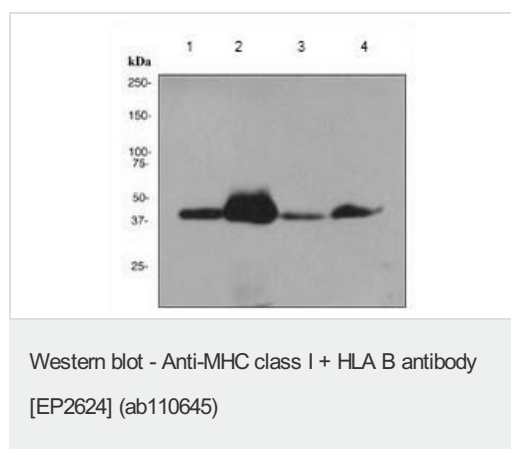
アプリケーション	Abreviews	特記事項
WB		1/1000 - 1/10000. Predicted molecular weight: 40 kDa.
IP		1/10 - 1/100.

追加情報 Is unsuitable for Flow Cyt.

ターゲット情報

細胞内局在 MHC class I: Cell Membrane; Type I membrane protein. HLA B: Membrane.

画像



All lanes : Anti-MHC class I + HLA B antibody [EP2624] (ab110645) at 1/1000 dilution

Lane 1 : Ramos cell lysate

Lane 2 : HL 60 cell lysate

Lane 3 : Jurkat cell lysate

Lane 4 : TF1 cell lysate

Lysates/proteins at 10 µg per lane.

Secondary

All lanes : Goat anti-rabbit HRP conjugated antibody at 1/2000 dilution

Predicted band size: 40 kDa



ab110645, at 1/100, staining HLA B in paraffin embedded Human tonsils by Immunohistochemistry.

Our Abpromise to you: Quality guaranteed and expert technical support

- Replacement or refund for products not performing as stated on the datasheet
- Valid for 12 months from date of delivery
- Response to your inquiry within 24 hours

- We provide support in Chinese, English, French, German, Japanese and Spanish
- Extensive multi-media technical resources to help you
- We investigate all quality concerns to ensure our products perform to the highest standards

If the product does not perform as described on this datasheet, we will offer a refund or replacement. For full details of the Abpromise, please visit <http://www.abcam.co.jp/abpromise> or contact our technical team.

Terms and conditions

- Guarantee only valid for products bought direct from Abcam or one of our authorized distributors