

Product datasheet

Anti-MD1 antibody ab45424

画像数 2

製品の概要

製品名	Anti-MD1 antibody
製品の詳細	Rabbit polyclonal to MD1
由来種	Rabbit
アプリケーション	適用あり: IHC-P, WB
種交差性	交差種: Mouse, Rat, Human
免疫原	Synthetic 15 amino acid peptide from near the center of human MD1
ポジティブ・コントロール	Daudi cell lysate.

製品の特性

製品の状態	Liquid
保存方法	Shipped at 4°C. Store at +4°C.
バッファー	Preservative: 0.02% Sodium Azide Constituents: PBS
精製度	Immunogen affinity purified
特記事項(精製)	This antibody is an immunoaffinity purified IgG
ポリ/モノ	ポリクローナル
アイソタイプ	IgG

アプリケーション

Our [Abpromise guarantee](#) covers the use of **ab45424** in the following tested applications.

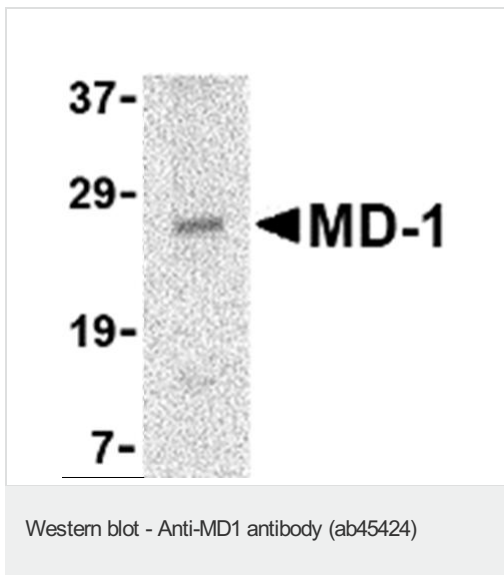
The application notes include recommended starting dilutions; optimal dilutions/concentrations should be determined by the end user.

アプリケーション	Abreviews	特記事項
IHC-P		Use a concentration of 2.5 µg/ml.
WB		Use a concentration of 1 - 2 µg/ml. Detects a band of approximately 27 kDa (predicted molecular weight: 18 kDa).

ターゲット情報

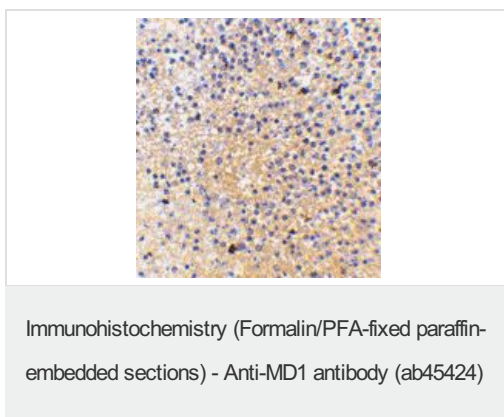
機能	May cooperate with CD180 and TLR4 to mediate the innate immune response to bacterial lipopolysaccharide (LPS) and cytokine production. Important for efficient CD180 cell surface expression.
組織特異性	Highly expressed in B-cells, monocytes and tonsil.
細胞内局在	Secreted > extracellular space. Associated with CD180 at the cell surface.

画像



Anti-MD1 antibody (ab45424) at 2 µg/ml +
Daudi cell lysate at 15 µg

Predicted band size: 18 kDa
Observed band size: 27 kDa



ab45424 at 2.5µg/ml staining MD1 in
human spleen tissue section by
Immunohistochemistry (Formalin/ PFA fixed
paraffin-embedded tissue sections).

Please note: All products are "FOR RESEARCH USE ONLY AND ARE NOT INTENDED FOR DIAGNOSTIC OR THERAPEUTIC USE"

Our Abpromise to you: Quality guaranteed and expert technical support

- Replacement or refund for products not performing as stated on the datasheet
- Valid for 12 months from date of delivery
- Response to your inquiry within 24 hours

- We provide support in Chinese, English, French, German, Japanese and Spanish
- Extensive multi-media technical resources to help you
- We investigate all quality concerns to ensure our products perform to the highest standards

If the product does not perform as described on this datasheet, we will offer a refund or replacement. For full details of the Abpromise, please visit <http://www.abcam.co.jp/abpromise> or contact our technical team.

Terms and conditions

- Guarantee only valid for products bought direct from Abcam or one of our authorized distributors