

Product datasheet

Anti-MCP1 antibody ab9899

画像数 1

製品の概要

製品名	Anti-MCP1 antibody
製品の詳細	Rabbit polyclonal to MCP1
由来種	Rabbit
アプリケーション	適用あり: ELISA, Neutralising, WB, ICC/IF
種交差性	交差種: Mouse
免疫原	Recombinant fragment, corresponding to amino acids 24/148 of Mouse MCP1 (Peptide available as ab9901 .)

特記事項

JE, also known as monocyte chemotactic protein (MCP-1), plays an important role in the inflammatory response of blood monocytes and tissue macrophages

製品の特性

製品の状態	Lyophilised: Reconstitute with 200µl of sterile water.
保存方法	Shipped at 4°C. Store at +4°C.
バッファー	PBS, pH 7.4, no preservative, sterile filtered
精製度	Immunogen affinity purified
一次抗体 備考	JE, also known as monocyte chemotactic protein (MCP-1), plays an important role in the inflammatory response of blood monocytes and tissue macrophages
ポリモノ	ポリクローナル
アイソタイプ	unknown
軽鎖の種類	unknown

アプリケーション

Our [Abpromise guarantee](#) covers the use of **ab9899** in the following tested applications.

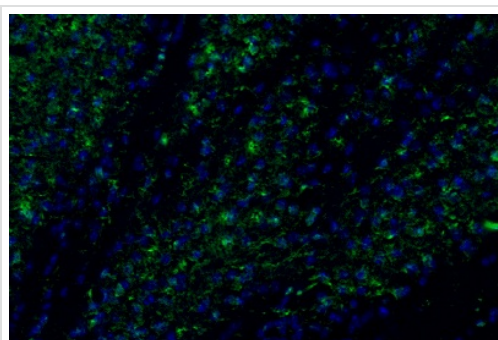
The application notes include recommended starting dilutions; optimal dilutions/concentrations should be determined by the end user.

アプリケーション	Abreviews	特記事項
ELISA		Use at an assay dependent concentration. To detect mJE by direct ELISA (using 100µl/well antibody solution) a concentration of at least 0.5µg/ml of this antibody is required. This antigen affinity purified antibody, in conjunction with compatible secondary reagents, allows the detection of 0.2 - 0.4 ng/well of recombinant mJE.
Neutralising		Use at an assay dependent concentration. To yield one-half maximal inhibition [ND50] of the biological activity of mJE (100 ng/ml), a concentration of 4.0 - 6.0 µg/ml of this antibody is required.
WB		Use at an assay dependent concentration. Can be blocked with Recombinant mouse MCP1 protein (ab9901) . To detect mJE by Western Blot analysis this antibody can be used at a concentration of 0.1 - 0.2 µg/ml. Used in conjunction with compatible secondary reagents the detection limit for recombinant mJE is 1.5 - 3.0 ng/lane, under either reducing or non-reducing conditions.
ICC/IF		Use a concentration of 1 µg/ml.

ターゲット情報

機能	Chemotactic factor that attracts monocytes and basophils but not neutrophils or eosinophils. Augments monocyte anti-tumor activity. Has been implicated in the pathogenesis of diseases characterized by monocytic infiltrates, like psoriasis, rheumatoid arthritis or atherosclerosis. May be involved in the recruitment of monocytes into the arterial wall during the disease process of atherosclerosis.
配列類似性	Belongs to the intercrine beta (chemokine CC) family.
翻訳後修飾	Processing at the N-terminus can regulate receptor and target cell selectivity. Deletion of the N-terminal residue converts it from an activator of basophil to an eosinophil chemoattractant.
細胞内局在	Secreted.

画像



Immunocytochemistry/ Immunofluorescence - Anti-MCP1 antibody (ab9899)

staining in colchicine injected mouse brain (including caudate putamen) tissue. The primary antibody was incubated at 1.0 ug/ml overnight at 4°C. This was followed by a peroxidase conjugated secondary antibody and then a fluorescein reagent. Optimal concentrations and conditions may vary.

Please note: All products are "FOR RESEARCH USE ONLY AND ARE NOT INTENDED FOR DIAGNOSTIC OR THERAPEUTIC USE"

Our Abpromise to you: Quality guaranteed and expert technical support

- Replacement or refund for products not performing as stated on the datasheet
- Valid for 12 months from date of delivery
- Response to your inquiry within 24 hours

- We provide support in Chinese, English, French, German, Japanese and Spanish
- Extensive multi-media technical resources to help you
- We investigate all quality concerns to ensure our products perform to the highest standards

If the product does not perform as described on this datasheet, we will offer a refund or replacement. For full details of the Abpromise, please visit <http://www.abcam.co.jp/abpromise> or contact our technical team.

Terms and conditions

- Guarantee only valid for products bought direct from Abcam or one of our authorized distributors