


Product datasheet

Anti-MCM4 antibody ab84153

1 References [画像数 2](#)

製品の概要

| | |
|--------------|--|
| 製品名 | Anti-MCM4 antibody |
| 製品の詳細 | Rabbit polyclonal to MCM4 |
| 由来種 | Rabbit |
| アプリケーション | 適用あり: IHC-P |
| 種交差性 | 交差種: Mouse, Human 交差が予測される動物種: Rabbit, Horse, Guinea pig, Cow, Chimpanzee, Rhesus monkey, Gorilla, Opossum, Orangutan, Elephant  |
| 免疫原 | Synthetic peptide corresponding to a region between residues 750 and 800 of Human MCM4 (NP_005905.2) |
| ポジティブ・コントロール | Human lung small cell carcinoma. Mouse squamous cell carcinoma. |

製品の特性

| | |
|--------|---|
| 製品の状態 | Liquid |
| 保存方法 | Shipped at 4°C. Upon delivery aliquot and store at -20°C. Avoid freeze / thaw cycles. |
| バッファー | Preservative: 0.09% Sodium Azide Constituents: 0.1% BSA, Tris buffered saline |
| 精製度 | Immunogen affinity purified |
| ポリ/モノ | ポリクローナル |
| アイソタイプ | IgG |

アプリケーション

Our [Abpromise guarantee](#) covers the use of **ab84153** in the following tested applications.

The application notes include recommended starting dilutions; optimal dilutions/concentrations should be determined by the end user.

| アプリケーション | Abreviews | 特記事項 |
|----------|-----------|------|
|----------|-----------|------|

IHC-P

追加情報

IHC-P: 1/100 - 1/500. Epitope exposure with citrate buffer will enhance staining.

Note: expected to work on frozen sections.

Not yet tested in other applications.

Optimal dilutions/concentrations should be determined by the end user.

ターゲット情報

機能

Acts as component of the MCM2-7 complex (MCM complex) which is the putative replicative helicase essential for 'once per cell cycle' DNA replication initiation and elongation in eukaryotic cells. The active ATPase sites in the MCM2-7 ring are formed through the interaction surfaces of two neighboring subunits such that a critical structure of a conserved arginine finger motif is provided in trans relative to the ATP-binding site of the Walker A box of the adjacent subunit. The six ATPase active sites, however, are likely to contribute differentially to the complex helicase activity.

配列類似性

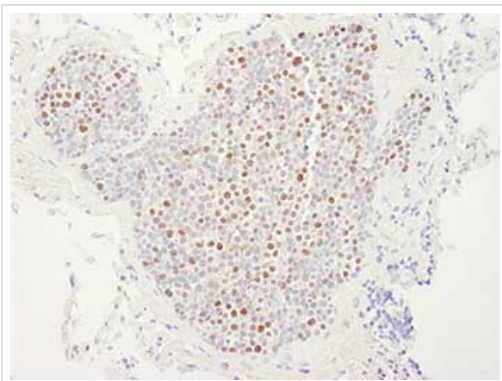
Belongs to the MCM family.

Contains 1 MCM domain.

細胞内局在

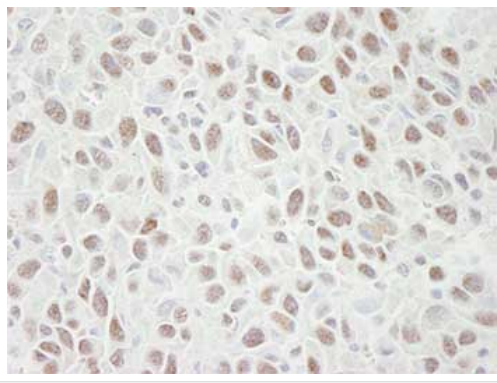
Nucleus.

画像



Immunohistochemistry analysis of formalin-fixed, paraffin-embedded Human lung small cell carcinoma tissue using 1/250 ab84153 followed by DAB staining.

Immunohistochemistry (Formalin/PFA-fixed paraffin-embedded sections) - Anti-MCM4 antibody (ab84153)



Immunohistochemistry analysis of formalin-fixed, paraffin-embedded Mouse squamous cell carcinoma tissue using 1/250 ab84153, followed by DAB staining.

Immunohistochemistry (Formalin/PFA-fixed paraffin-embedded sections) - Anti-MCM4 antibody (ab84153)

Please note: All products are "FOR RESEARCH USE ONLY AND ARE NOT INTENDED FOR DIAGNOSTIC OR THERAPEUTIC USE"

Our Abpromise to you: Quality guaranteed and expert technical support

- Replacement or refund for products not performing as stated on the datasheet
- Valid for 12 months from date of delivery
- Response to your inquiry within 24 hours
- We provide support in Chinese, English, French, German, Japanese and Spanish
- Extensive multi-media technical resources to help you
- We investigate all quality concerns to ensure our products perform to the highest standards

If the product does not perform as described on this datasheet, we will offer a refund or replacement. For full details of the Abpromise, please visit <http://www.abcam.co.jp/abpromise> or contact our technical team.

Terms and conditions

- Guarantee only valid for products bought direct from Abcam or one of our authorized distributors