

Product datasheet

Anti-MBD2 + MBD3 antibody ab3757

画像数 1

製品の概要

製品名	Anti-MBD2 + MBD3 antibody
製品の詳細	Rabbit polyclonal to MBD2 + MBD3
由来種	Rabbit
特異性	This antibody recognises the two Drosophila MBD 2 + 3 variants.
アプリケーション	適用あり: ICC/IF, WB
種交差性	交差種: Drosophila melanogaster
免疫原	Recombinant full length protein (Drosophila melanogaster).
特記事項	Methyl CpG binding domain proteins (MBDs) are a family of mammalian proteins that specifically bind methylated regions of DNA. There are two methyl CpG binding complexes, MeCP1 and MeCP2. MeCP2 is comprised of a single protein also denoted MeCP2. MeCP1 is composed of four different proteins termed MBD 1 (also known as PCM 1), MBD 2, MBD 3, and MBD 4 (also known as MED 1).

製品の特性

製品の状態	Liquid
保存方法	Shipped at 4°C. Store at +4°C short term (1-2 weeks). Upon delivery aliquot. Store at -20°C or -80°C. Avoid freeze / thaw cycle.
バッファー	serum with 0.02% sodium azide
精製度	Whole antiserum
一次抗体 備考	Methyl CpG binding domain proteins (MBDs) are a family of mammalian proteins that specifically bind methylated regions of DNA. There are two methyl CpG binding complexes, MeCP1 and MeCP2. MeCP2 is comprised of a single protein also denoted MeCP2. MeCP1 is composed of four different proteins termed MBD 1 (also known as PCM 1), MBD 2, MBD 3, and MBD 4 (also known as MED 1).
ポリ/モノ	ポリクローナル
アイソタイプ	IgG

アプリケーション

Our [Abpromise guarantee](#) covers the use of **ab3757** in the following tested applications.

The application notes include recommended starting dilutions; optimal dilutions/concentrations should be determined by the end user.

アプリケーション	Abreviews	特記事項
ICC/IF		Use at an assay dependent concentration.
WB		1/500. Detects a band of approximately 25,35 kDa (predicted molecular weight: 25,35 kDa). Detects two bands of approximately 25 kDa and 35 kDa which correspond to the predicted molecular weights of recombinant drosophila MBD 2 + 3 short and long forms, respectively.

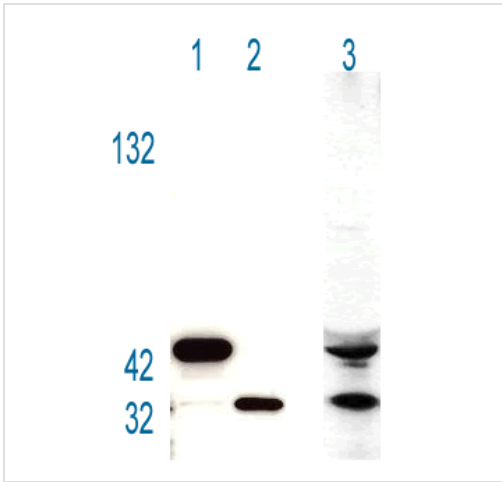
ターゲット情報

関連性

DNA methylation, or the addition of methyl groups to cytosine bases in the dinucleotide CpG, is imperative to proper development and regulates gene expression. The methylation pattern involves the enzymatic processes of methylation and demethylation. The demethylation enzyme was recently found to be a mammalian protein, which exhibits demethylase activity associated to a methyl-CpG-binding domain (MBD). The enzyme is able to revert methylated cytosine bases to cytosines within the particular dinucleotide sequence mCpG by catalyzing the cleaving of the methyl group as methanol. MeCP2 and MBD1 (PCM1) are first found to repress transcription by binding specifically to methylated DNA. MBD2 and MBD4 (also known as MED1) were later found to colocalize with foci of heavily methylated satellite DNA and believed to mediate the biological functions of the methylation signal. Surprisingly, MBD3 does not bind methylated DNA both in vivo and in vitro. MBD1, MBD2, MBD3, and MBD4 are found to be expressed in somatic tissues, but the expression of MBD1 and MBD2 is reduced or absent in embryonic stem cells, which are known to be deficient in MeCP1 activity. MBD4 have homology to bacterial base excision repair DNA N-glycosylases/lyases. In some microsatellite unstable tumors MBD4 is mutated at an exonic polynucleotide tract.

細胞内局在 Nuclear

画像



Western blot - MBD2 + MBD3 antibody (ab3757)

Rabbit polyclonal to Drosophila MBD 2 + 3 (at a 1/500 dilution):

1. Recombinant drosophila MBD 2 + 3 (long form)
2. Recombinant drosophila MBD 2 + 3d (short form)
3. Nuclear extract of Drosophila embryos where the two drosophila MBD 2 + 3 forms are detected.

Rabbit polyclonal to Drosophila MBD 2 + 3 (at a 1/500 dilution):

1. Recombinant drosophila MBD 2 + 3 (long form)
2. Recombinant drosophila MBD 2 + 3d (short form)
3. Nuclear extract of Drosophila embryos where the two drosophila MBD 2 + 3 forms are detected.

Please note: All products are "FOR RESEARCH USE ONLY AND ARE NOT INTENDED FOR DIAGNOSTIC OR THERAPEUTIC USE"

Our Abpromise to you: Quality guaranteed and expert technical support

- Replacement or refund for products not performing as stated on the datasheet
- Valid for 12 months from date of delivery
- Response to your inquiry within 24 hours
- We provide support in Chinese, English, French, German, Japanese and Spanish
- Extensive multi-media technical resources to help you
- We investigate all quality concerns to ensure our products perform to the highest standards

If the product does not perform as described on this datasheet, we will offer a refund or replacement. For full details of the Abpromise, please visit <http://www.abcam.co.jp/abpromise> or contact our technical team.

Terms and conditions

- Guarantee only valid for products bought direct from Abcam or one of our authorized distributors