

## Product datasheet

# Anti-MAP4K3 antibody ab103481

1 References [画像数 3](#)

### 製品の概要

製品名	Anti-MAP4K3 antibody
製品の詳細	Rabbit polyclonal to MAP4K3
由来種	Rabbit
アプリケーション	<b>適用あり:</b> WB, IHC-P, ICC/IF
種交差性	<b>交差種:</b> Human
免疫原	Recombinant Human MAP4K3.
ポジティブ・コントロール	HepG2 cell line lysates. Brain tissue. This antibody gave a positive result in IF/ICC when used in the following methanol fixed cell lines: MALME-3M.

### 製品の特性

製品の状態	Liquid
保存方法	Shipped at 4°C. Store at 4°C (up to 6 months). Store at -20°C long term.
バッファー	Preservative: 0.09% Sodium Azide Constituents: PBS
精製度	Immunogen affinity purified
特記事項(精製)	This antibody is purified through a protein A column, followed by protein affinity purification.
ポリ/モノ	ポリクローナル
アイソタイプ	IgG

### アプリケーション

Our [Abpromise guarantee](#) covers the use of **ab103481** in the following tested applications.

The application notes include recommended starting dilutions; optimal dilutions/concentrations should be determined by the end user.

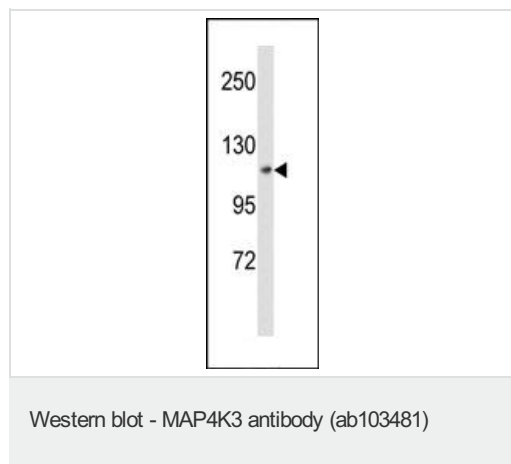
アプリケーション	Abreviews	特記事項
WB		1/100 - 1/500. Predicted molecular weight: 101 kDa.

アプリケーション	Abreviews	特記事項
IHC-P		1/50 - 1/100. Perform heat mediated antigen retrieval with citrate buffer pH 6 before commencing with IHC staining protocol.
ICC/IF		Use a concentration of 10 µg/ml.

## ターゲット情報

関連性	May play a role in the response to environmental stress. This gene encodes a member of the Ste20 family of serine/threonine protein kinases. The protein belongs to the subfamily that consists of members, such as germinal center kinase (GCK), that are characterized by an N-terminal catalytic domain and C-terminal regulatory domain. The protein specifically activates the c-Jun N-terminal kinase (JNK) signaling pathway.
細胞内局在	Cytoplasmic and Nuclear

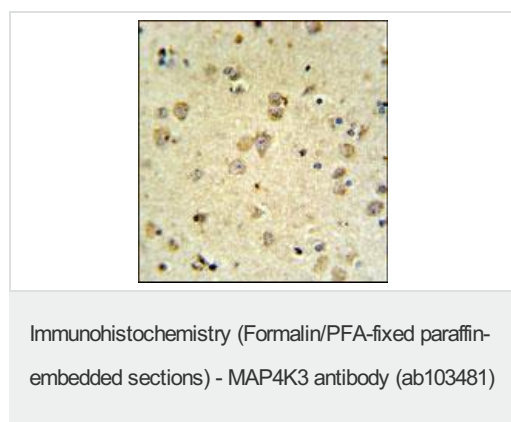
## 画像



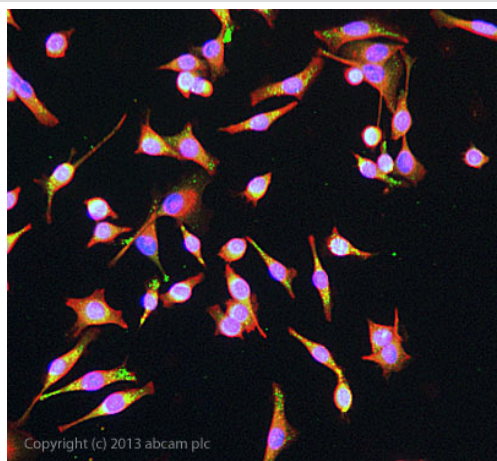
Anti-MAP4K3 antibody (ab103481) at 1/100 dilution + HepG2 cell line lysates at 35 µg

Developed using the ECL technique.

**Predicted band size:** 101 kDa



ab103481 at 1/50 dilution staining MAP4K3 in formalin-fixed and paraffin-embedded brain tissue by Immunohistochemistry (Formalin/PFA-fixed paraffin-embedded sections). Detection utilised DAB.



Immunocytochemistry/ Immunofluorescence - Anti-MAP4K3 antibody (ab103481)

ICC/IF image of ab103481 stained MALME-3M cells. The cells were 100% methanol fixed (5 min) and then incubated in 1%BSA / 10% normal goat serum / 0.3M glycine in 0.1% PBS-Tween for 1h to permeabilise the cells and block non-specific protein-protein interactions. The cells were then incubated with the antibody ab103481 at 10µg/ml overnight at +4°C. The secondary antibody (green) was DyLight® 488 goat anti- rabbit (ab96899) IgG (H+L) used at a 1/1000 dilution for 1h. Alexa Fluor® 594 WGA was used to label plasma membranes (red) at a 1/200 dilution for 1h. DAPI was used to stain the cell nuclei (blue) at a concentration of 1.43µM.

**Please note:** All products are "FOR RESEARCH USE ONLY AND ARE NOT INTENDED FOR DIAGNOSTIC OR THERAPEUTIC USE"

### Our Abpromise to you: Quality guaranteed and expert technical support

- Replacement or refund for products not performing as stated on the datasheet
- Valid for 12 months from date of delivery
- Response to your inquiry within 24 hours
- We provide support in Chinese, English, French, German, Japanese and Spanish
- Extensive multi-media technical resources to help you
- We investigate all quality concerns to ensure our products perform to the highest standards

If the product does not perform as described on this datasheet, we will offer a refund or replacement. For full details of the Abpromise, please visit <http://www.abcam.co.jp/abpromise> or contact our technical team.

### Terms and conditions

- Guarantee only valid for products bought direct from Abcam or one of our authorized distributors