

Product datasheet

Anti-MAP2 antibody [HM-2] ab11267

★★★★★ 6 Abreviews 61 References 画像数 3

製品の概要

製品名	Anti-MAP2 antibody [HM-2]
製品の詳細	Mouse monoclonal [HM-2] to MAP2
由来種	Mouse
アプリケーション	適用あり: ICC, IHC-Fr, ICC/IF, IHC-FrFI, WB, IHC-P, IHC-FoFr
種交差性	交差種: Mouse, Rat, Chicken, Cow, Human, Quail
免疫原	Other Immunogen Type corresponding to MAP2. HM-2 hybridoma produced by the fusion of mouse myeloma cells and splenocytes from mice immunized with rat brain microtubule associated proteins (MAPs).
ポジティブ・コントロール	Rat brain extract.
特記事項	Storage in frost-free freezers is not recommended. If slight turbidity occurs upon prolonged storage, clarify the solution by centrifugation before use. Working dilutions should be discarded if not used within 12 hours. Abcam is committed to meeting high standards of ethical manufacturing and has decided to discontinue this product by June 2019 as it has been generated by the ascites method. We are sorry for any inconvenience this may cause. We would recommend antibody ab32454 as a replacement.

製品の特性

製品の状態	Liquid
保存方法	Shipped at 4°C. Upon delivery aliquot and store at -20°C or -80°C. Avoid repeated freeze / thaw cycles.
バッファー	Preservative: 15mM Sodium Azide Constituents: 0.01M PBS, pH 7.4
精製度	Protein A purified
特記事項 (精製)	Purified from ascites. A combination of fractionation, ion-exchange chromatography and/or gel filtration chromatography is used to isolate the immunoglobulin.
ポリ/モノ	モノクローナル
クローン名	HM-2
アイソタイプ	IgG1

アプリケーション

Our [Abpromise guarantee](#) covers the use of **ab11267** in the following tested applications.

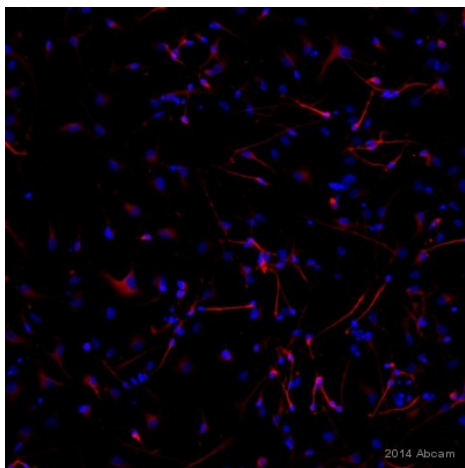
The application notes include recommended starting dilutions; optimal dilutions/concentrations should be determined by the end user.

アプリケーション	Abreviews	特記事項
ICC	★★★★★	Use at an assay dependent concentration.
IHC-Fr	★★★★★	Use at an assay dependent concentration.
ICC/IF	★★★★★	1/500. Fix cells in 4% paraformaldehyde/PBS for 45 min; then permeabilise cells with 0.2% Triton X-100 in PBS for 5 min (see Farah et al) OR fix in 4% paraformaldehyde (containing 0.2% picric acid in 0.1 M phosphate buffer, pH 6.9) for 15 min at room temperature (see O' Hare et al) .
IHC-FrFI	★★★★★	Use at an assay dependent concentration. PubMed: 24223856
WB	★★★★☆	Use a concentration of 1 - 2 µg/ml. Detects a band of approximately 280 kDa. (see Farah et al).
IHC-P		Use at an assay dependent concentration.
IHC-FoFr		1/500. PubMed: 20424326

ターゲット情報

機能	The exact function of MAP2 is unknown but MAPs may stabilize the microtubules against depolymerization. They also seem to have a stiffening effect on microtubules.
配列類似性	Contains 3 Tau/MAP repeats.
翻訳後修飾	Phosphorylated at serine residues in K-X-G-S motifs by MAP/microtubule affinity-regulating kinase (MARK1 or MARK2), causing detachment from microtubules, and their disassembly (By similarity). Isoform 2 is probably phosphorylated by PKA at Ser-323, Ser-354 and Ser-386 and by FYN at Tyr-67.
細胞内局在	Cytoplasm, cytoskeleton.

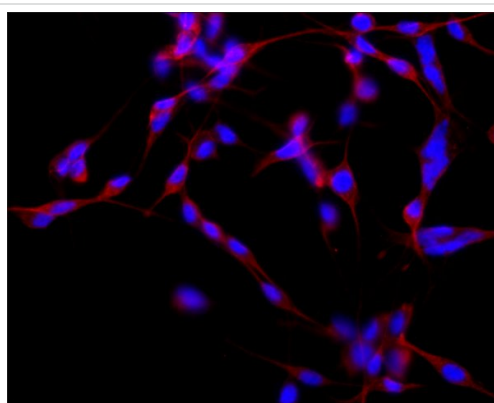
画像



Immunocytochemistry/ Immunofluorescence - Anti-MAP2 antibody [HM-2] (ab11267)

This image is courtesy of an Abreview submitted by Aleksandra Maruszak

ab11267 staining MAP2 in human hippocampal progenitor cells by ICC/IF (Immunocytochemistry/immunofluorescence). Cells were fixed with paraformaldehyde, permeabilized with 0.3% Triton X-100 and blocked with 5% serum for 1 hour at 18°C. Samples were incubated with the undiluted primary antibody for 12 hours at 4°C. An undiluted Alexa Fluor® 555-conjugated donkey anti-mouse IgG polyclonal was used as the secondary antibody.



Immunocytochemistry/ Immunofluorescence - Anti-MAP2 antibody [HM-2] (ab11267)

Immunocytochemical analysis of B35 cells labelling MAP2 with ab11267 at a concentration of 2 µg/mL. The secondary was developed using Goat anti-mouse IgG. Cells were counterstained with DAPI to stain nuclei.



Immunohistochemistry (Frozen sections) - Anti-MAP2 antibody [HM-2] (ab11267)

This image is courtesy of an Abreview submitted by Dr Grazyna Niewiadomska

ab11267 staining rat brain tissue sections by IHC-Fr. Sections were PFA fixed and permeabilized in TritonX100 prior to blocking with 3% BSA for 1 hour. The primary antibody was diluted 1/500 and incubated with the sample for 12 hours at 4°C. An Alexa Fluor® conjugated goat anti-mouse was used as the secondary antibody.

The image shows a cross section through the rat hippocampal CA1 area at magnification 200x. The anti-MAP2 staining is clearly visible in dendrites of pyramidal cells.

Our Abpromise to you: Quality guaranteed and expert technical support

- Replacement or refund for products not performing as stated on the datasheet
- Valid for 12 months from date of delivery
- Response to your inquiry within 24 hours

- We provide support in Chinese, English, French, German, Japanese and Spanish
- Extensive multi-media technical resources to help you
- We investigate all quality concerns to ensure our products perform to the highest standards

If the product does not perform as described on this datasheet, we will offer a refund or replacement. For full details of the Abpromise, please visit <http://www.abcam.co.jp/abpromise> or contact our technical team.

Terms and conditions

- Guarantee only valid for products bought direct from Abcam or one of our authorized distributors