

## Product datasheet

# Anti-MAGED1 antibody ab38492

### 画像数 2

#### 製品の概要

製品名	Anti-MAGED1 antibody
製品の詳細	Rabbit polyclonal to MAGED1
特異性	This antibody is specific for MAGED1.
アプリケーション	<b>適用あり:</b> IHC-P, WB, ELISA
種交差性	<b>交差種:</b> Human
免疫原	A KLH conjugated synthetic peptide (10-30 aa in length) in the region of 466~481 of human MAGED1.
ポジティブ・コントロール	A549 lysate and breast carcinoma tissue.

#### 製品の特性

製品の状態	Liquid
保存方法	Shipped at 4°C. Store at +4°C short term (1-2 weeks). Upon delivery aliquot. Store at -20°C long term.
バッファー	Preservative: 0.09% Sodium Azide Constituents: PBS
精製度	Protein G purified
特記事項 (精製)	This antibody is purified through a protein G column and eluted out with both high and low pH buffers and neutralized immediately after elution then followed by dialysis against PBS.
ポリモノ	ポリクローナル
アイソタイプ	IgG

#### アプリケーション

Our [Abpromise guarantee](#) covers the use of **ab38492** in the following tested applications.

The application notes include recommended starting dilutions; optimal dilutions/concentrations should be determined by the end user.

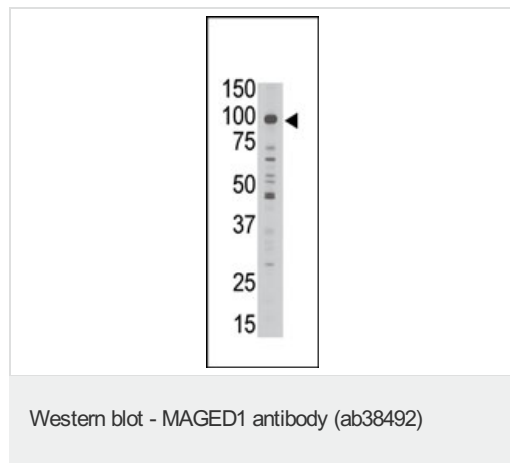
アプリケーション	Abreviews	特記事項
IHC-P		1/50 - 1/100.

アプリケーション	Abreviews	特記事項
WB		1/100 - 1/500. Detects a band of approximately 86 kDa (predicted molecular weight: 86 kDa).
ELISA		1/1000.

## ターゲット情報

<b>機能</b>	Involved in the apoptotic response after nerve growth factor (NGF) binding in neuronal cells. Inhibits cell cycle progression, and facilitates NGFR-mediated apoptosis. May act as a regulator of the function of DLX family members. May enhance ubiquitin ligase activity of RING-type zinc finger-containing E3 ubiquitin-protein ligases. Proposed to act through recruitment and/or stabilization of the Ubl-conjugating enzyme (E2) at the E3:substrate complex. Plays a role in the circadian rhythm regulation. May act as RORA co-regulator, modulating the expression of core clock genes such as ARNTL/BMAL1 and NFIL3, induced, or NR1D1, repressed.
<b>組織特異性</b>	Expressed in bone marrow stromal cells from both multiple myeloma patients and healthy donors. Seems to be ubiquitously expressed.
<b>配列類似性</b>	Contains 1 MAGE domain.
<b>細胞内局在</b>	Cytoplasm. Cell membrane. Nucleus. Expression shifts from the cytoplasm to the plasma membrane upon stimulation with NGF.

## 画像

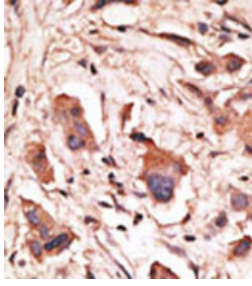


Anti-MAGED1 antibody (ab38492) at 1/100 dilution + A549 lysate

**Predicted band size** : 86 kDa

**Observed band size** : 86 kDa

**Additional bands at** : 30 kDa,45 kDa,50 kDa,55 kDa,60 kDa,65 kDa. We are unsure as to the identity of these extra bands.



Immunohistochemistry (Formalin/PFA-fixed paraffin-embedded sections) - MAGED1 antibody (ab38492)

Formalin-fixed and paraffin-embedded human breast cancer tissue reacted with ab38492, which was peroxidase-conjugated to the secondary antibody, followed by DAB staining. This data demonstrates the use of this antibody for immunohistochemistry.

**Please note:** All products are "FOR RESEARCH USE ONLY AND ARE NOT INTENDED FOR DIAGNOSTIC OR THERAPEUTIC USE"

### **Our Abpromise to you: Quality guaranteed and expert technical support**

- Replacement or refund for products not performing as stated on the datasheet
- Valid for 12 months from date of delivery
- Response to your inquiry within 24 hours
- We provide support in Chinese, English, French, German, Japanese and Spanish
- Extensive multi-media technical resources to help you
- We investigate all quality concerns to ensure our products perform to the highest standards

If the product does not perform as described on this datasheet, we will offer a refund or replacement. For full details of the Abpromise, please visit <http://www.abcam.co.jp/abpromise> or contact our technical team.

### **Terms and conditions**

- Guarantee only valid for products bought direct from Abcam or one of our authorized distributors