


Product datasheet

Anti-MAGE 1 antibody [SPM282] ab25834

画像数 1

製品の概要

製品名	Anti-MAGE 1 antibody [SPM282]
製品の詳細	Mouse monoclonal [SPM282] to MAGE 1
由来種	Mouse
特異性	ab25834 recognises MAGE-1.
アプリケーション	適用あり: ICC/IF, IHC-P, WB
種交差性	交差種: Human 交差が予測される動物種: Rat, Dog 
免疫原	Partially purified, full length recombinant human MAGE-1 protein
ポジティブ・コントロール	Colo32 cells Germ cells in testis.

製品の特性

製品の状態	Liquid
保存方法	Shipped at 4°C. Upon delivery aliquot and store at -20°C. Avoid freeze / thaw cycles.
バッファー	Preservative: 0.09% Sodium Azide Constituents: BSA, 10mM PBS, pH 7.4
精製度	Protein G purified
ポリモノ	モノクローナル
クローン名	SPM282
アイソタイプ	IgG1
軽鎖の種類	kappa

アプリケーション

Our [Abpromise guarantee](#) covers the use of **ab25834** in the following tested applications.

The application notes include recommended starting dilutions; optimal dilutions/concentrations should be determined by the end user.

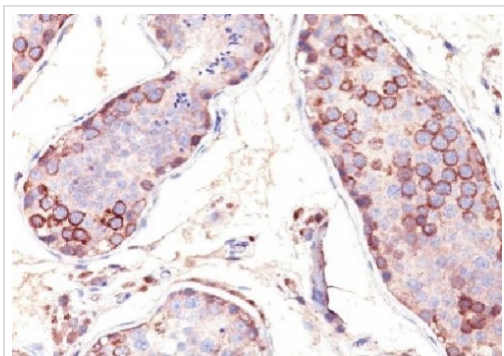
アプリケーション	Abreviews	特記事項
ICC/IF		Use at an assay dependent concentration.

アプリケーション	Abreviews	特記事項
IHC-P		1/25. Perform heat mediated antigen retrieval before commencing with IHC staining protocol.
WB		Use a concentration of 0.5 - 1 µg/ml. Predicted molecular weight: 44 kDa.

ターゲット情報

機能	May be involved in transcriptional regulation through interaction with SNW1 and recruiting histone deacetylase HDAC1. May inhibit notch intracellular domain (NICD) transactivation. May play a role in embryonal development and tumor transformation or aspects of tumor progression. Antigen recognized on a melanoma by autologous cytolytic T-lymphocytes.
組織特異性	Expressed in many tumors of several types, such as melanoma, head and neck squamous cell carcinoma, lung carcinoma and breast carcinoma, but not in normal tissues except for testes. Never expressed in kidney tumors, leukemias and lymphomas.
配列類似性	Contains 1 MAGE domain.
細胞内局在	Cytoplasm. Nucleus.

画像



Immunohistochemistry (Formalin/PFA-fixed paraffin-embedded sections) analysis of human testis tissue labelling MAGE 1 with ab25834.

Immunohistochemistry (Formalin/PFA-fixed paraffin-embedded sections) - Anti-MAGE 1 antibody [SPM282] (ab25834)

Please note: All products are "FOR RESEARCH USE ONLY AND ARE NOT INTENDED FOR DIAGNOSTIC OR THERAPEUTIC USE"

Our Abpromise to you: Quality guaranteed and expert technical support

- Replacement or refund for products not performing as stated on the datasheet
- Valid for 12 months from date of delivery
- Response to your inquiry within 24 hours
- We provide support in Chinese, English, French, German, Japanese and Spanish
- Extensive multi-media technical resources to help you

- We investigate all quality concerns to ensure our products perform to the highest standards

If the product does not perform as described on this datasheet, we will offer a refund or replacement. For full details of the Abpromise, please visit <http://www.abcam.co.jp/abpromise> or contact our technical team.

Terms and conditions

- Guarantee only valid for products bought direct from Abcam or one of our authorized distributors