


Product datasheet

Anti-Laminin antibody ab30320

12 References 画像数 2

製品の概要

製品名	Anti-Laminin antibody
製品の詳細	Rabbit polyclonal to Laminin
アプリケーション	適用あり: WB, ICC/IF, IHC-Fr, IHC-FoFr
種交差性	交差種: Mouse, Rat 交差が予測される動物種: Mammal 
免疫原	Full length native protein isolated from mouse EHS tumor(purified)
ポジティブ・コントロール	This antibody gave a positive signal in MEF1 cell line in IF/ICC.

法規制情報

**医薬用外毒物**

製品の特性

製品の状態	Liquid
保存方法	Shipped at 4°C. Upon delivery aliquot and store at -20°C. Avoid freeze / thaw cycles.
バッファー	Preservative: 0.01% Thimerosal (merthiolate) Constituents: 50% Glycerol
精製度	Whole antiserum
ポリ/モノ	ポリクローナル
アイソタイプ	IgG

アプリケーション

Our [Abpromise guarantee](#) covers the use of **ab30320** in the following tested applications.

The application notes include recommended starting dilutions; optimal dilutions/concentrations should be determined by the end user.

アプリケーション	Abreviews	特記事項
WB		1/1000 - 1/5000. Predicted molecular weight: 337 kDa.
ICC/IF		1/100 - 1/2500.
IHC-Fr		1/1000.

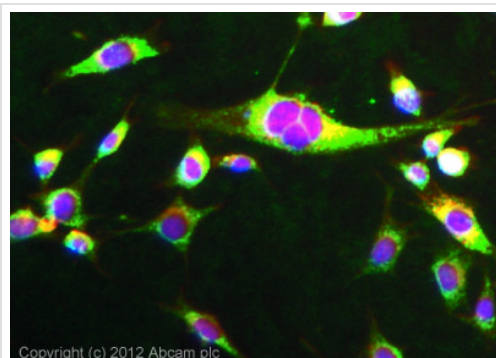
IHC-FoFr

1/1000.

## ターゲット情報

機能	Binding to cells via a high affinity receptor, laminin is thought to mediate the attachment, migration and organization of cells into tissues during embryonic development by interacting with other extracellular matrix components.
組織特異性	Broadly expressed in: skin, heart, lung, and the reproductive tracts.
配列類似性	Contains 11 laminin EGF-like domains. Contains 1 laminin IV type A domain. Contains 1 laminin N-terminal domain.
ドメイン	The alpha-helical domains I and II are thought to interact with other laminin chains to form a coiled coil structure. Domain IV is globular.
細胞内局在	Secreted > extracellular space > extracellular matrix > basement membrane.

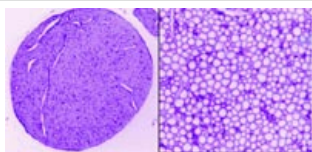
## Anti-Laminin antibody 画像



Immunocytochemistry/ Immunofluorescence - Anti-Laminin antibody (ab30320)

ICC/IF image of ab30320 stained MEF1 cells.

The cells were 4% formaldehyde fixed (10 min) and then incubated in 1%BSA / 10% normal goat serum / 0.3M glycine in 0.1% PBS-Tween for 1h to permeabilise the cells and block non-specific protein-protein interactions. The cells were then incubated with the antibody (ab30320, 5µg/ml) overnight at +4°C. The secondary antibody (green) was [ab96899](#), DyLight® 488 goat anti-rabbit IgG (H+L) used at a 1/250 dilution for 1h. Alexa Fluor® 594 WGA was used to label plasma membranes (red) at a 1/200 dilution for 1h. DAPI was used to stain the cell nuclei (blue) at a concentration of 1.43µM.



Immunohistochemistry (Frozen sections) - Anti-Laminin antibody (ab30320)

Rat peripheral nerve (low and high magnification; formalin fixed, frozen sections). Immuno-FITC stain (color inverted) with 1:1000 anti-Laminin1 antibody (ab30320).

## Our Abpromise to you: Quality guaranteed and expert technical support

---

- Replacement or refund for products not performing as stated on the datasheet
- Valid for 12 months from date of delivery
- Response to your inquiry within 24 hours
  
- We provide support in Chinese, English, French, German, Japanese and Spanish
- Extensive multi-media technical resources to help you
- We investigate all quality concerns to ensure our products perform to the highest standards

If the product does not perform as described on this datasheet, we will offer a refund or replacement. For full details of the Abpromise, please visit <http://www.abcam.co.jp/abpromise> or contact our technical team.

## Terms and conditions

---

- Guarantee only valid for products bought direct from Abcam or one of our authorized distributors