

Product datasheet

Anti-Lambda Light chain antibody [HP6054], prediluted ab17112

画像数 1

製品の概要

製品名	Anti-Lambda Light chain antibody [HP6054], prediluted
製品の詳細	Mouse monoclonal [HP6054] to Lambda Light chain, prediluted
由来種	Mouse
アプリケーション	適用あり: IHC-Fr, IHC-P
種交差性	交差種: Human 非交差種: Rat
免疫原	Purified human IgG myeloma proteins covalently linked to polyaminostyrene micro beads.
ポジティブ・コントロール	Tonsil
特記事項	This antibody stains B cell follicles in human lymphoid tissues. The mantle zone shows a mosaic pattern of labeling while the germinal centers show a coarse meshwork pattern of staining. Lambda light chain antibody can be used for the identification of leukemias, plasmacytomas and certain non-Hodgkin's lymphomas.

製品の特性

製品の状態	Prediluted
保存方法	Shipped at 4°C. Store at +4°C.
バッファー	Preservative: 0.05% Sodium Azide Constituents: Inert stabilizer
精製度	Protein A purified
一次抗体 備考	This antibody stains B cell follicles in human lymphoid tissues. The mantle zone shows a mosaic pattern of labeling while the germinal centers show a coarse meshwork pattern of staining. Lambda light chain antibody can be used for the identification of leukemias, plasmacytomas and certain non-Hodgkin's lymphomas.
ポリ/モノ	モノクローナル
クローン名	HP6054
アイソタイプ	IgG2a
軽鎖の種類	kappa

アプリケーション

Our [Abpromise guarantee](#) covers the use of **ab17112** in the following tested applications.

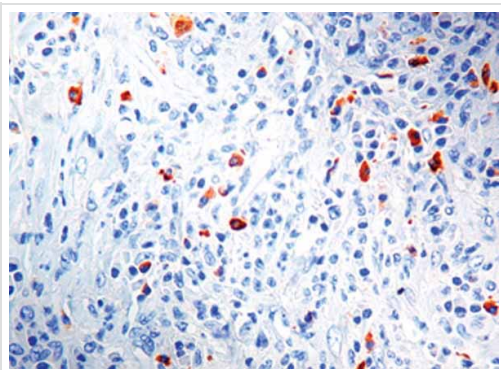
The application notes include recommended starting dilutions; optimal dilutions/concentrations should be determined by the end user.

アプリケーション	Abreviews	特記事項
IHC-Fr		1/1. Acetone fixed. Prediluted and ready to use. An incubation period of 30 minutes at room temperature is recommended.
IHC-P		1/1. Perform heat mediated antigen retrieval with citrate buffer pH 6 before commencing with IHC staining protocol. Prediluted and ready to use. An incubation period of 30 minutes at room temperature is recommended. Formalin fixed paraffin embedded tissue sections require high temperature antigen unmasking with 10 mM citrate buffer, pH 6.0 prior to immunostaining.

ターゲット情報

関連性	All five immunoglobulin classes share the same basic four polypeptide chain structure of two heavy-chains and two light chains. There are five heavy chain types, and two light-chain types (Kappa and Lambda) both having a molecular weight of 22.5kDa. Any heavy-chain type can associate with either light-chain type, but on any immunoglobulin molecule both light-chains are of the same type. Kappa and Lambda consist of a variable region and a constant region and can easily be differentiated by the antigenic properties of the constant region. The ratio of Kappa to Lambda is 70:30 , the vast majority of which is bound to heavy-chain in immunoglobulin. In normal individuals low levels of free light-chain are present in serum (kappa, 1.6-15.2 mg/L; Lambda, 0.4-4.2mg/L), with the occurrence of multiple myeloma or other B-cell malignancies these levels can be greatly elevated and can be found at high levels in the urine (Bence-Jones proteins).
細胞内局在	Cytoplasmic

画像



Immunohistochemical analysis of formalin-fixed paraffin-embedded human tonsil tissue sections, labelling Lambda Light Chain with ab17112.

Immunohistochemistry (Formalin/PFA-fixed paraffin-embedded sections) - Anti-Lambda Light chain antibody [HP6054], prediluted (ab17112)

Please note: All products are "FOR RESEARCH USE ONLY AND ARE NOT INTENDED FOR DIAGNOSTIC OR THERAPEUTIC USE"

Our Abpromise to you: Quality guaranteed and expert technical support

- Replacement or refund for products not performing as stated on the datasheet
- Valid for 12 months from date of delivery
- Response to your inquiry within 24 hours
- We provide support in Chinese, English, French, German, Japanese and Spanish
- Extensive multi-media technical resources to help you
- We investigate all quality concerns to ensure our products perform to the highest standards

If the product does not perform as described on this datasheet, we will offer a refund or replacement. For full details of the Abpromise, please visit <http://www.abcam.co.jp/abpromise> or contact our technical team.

Terms and conditions

- Guarantee only valid for products bought direct from Abcam or one of our authorized distributors