

## Product datasheet

# Anti-LIX1 antibody ab107300

### 画像数 1

#### 製品の概要

|              |  |
|--------------|--|
| 製品名          | Anti-LIX1 antibody   |
| 製品の詳細        | Rabbit polyclonal to LIX1  |
| 由来種          | Rabbit   |
| アプリケーション     | 適用あり: WB   |
| 種交差性         | 交差種: Mouse, Human  |
| 免疫原          | Synthetic peptide conjugated to KLH, between amino acids 224-254 from the C-terminal region of human LIX1 (NP_694966.3). |
| ポジティブ・コントロール | Mouse heart tissue lysate  |

#### 製品の特性

|          |   |
|----------|---|
| 製品の状態    | Liquid  |
| 保存方法     | Shipped at 4°C. Store at 4°C (up to 6 months). Store at -20°C long term.                    |
| バッファー    | Preservative: 0.09% Sodium Azide<br>Constituents: PBS                                       |
| 精製度      | Immunogen affinity purified   |
| 特記事項(精製) | ab107300 is purified through a protein A column, followed by peptide affinity purification. |
| ポリ/モノ    | ポリクローナル   |
| アイソタイプ   | IgG   |

#### アプリケーション

Our [Abpromise guarantee](#) covers the use of **ab107300** in the following tested applications.

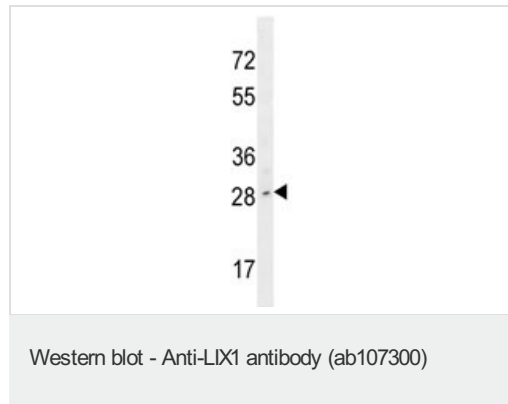
The application notes include recommended starting dilutions; optimal dilutions/concentrations should be determined by the end user.

| アプリケーション | Abreviews | 特記事項   |
|----------|-----------|--|
| WB       |           | 1/100 - 1/500. Predicted molecular weight: 32 kDa. |

## 配列類似性

Belongs to the LIX1 family.

## 画像



Anti-LIX1 antibody (ab107300) at 1/100 dilution + Mouse heart tissue lysate at 35 µg

**Predicted band size:** 32 kDa

**Please note:** All products are "FOR RESEARCH USE ONLY AND ARE NOT INTENDED FOR DIAGNOSTIC OR THERAPEUTIC USE"

## Our Abpromise to you: Quality guaranteed and expert technical support

- Replacement or refund for products not performing as stated on the datasheet
- Valid for 12 months from date of delivery
- Response to your inquiry within 24 hours
- We provide support in Chinese, English, French, German, Japanese and Spanish
- Extensive multi-media technical resources to help you
- We investigate all quality concerns to ensure our products perform to the highest standards

If the product does not perform as described on this datasheet, we will offer a refund or replacement. For full details of the Abpromise, please visit <http://www.abcam.co.jp/abpromise> or contact our technical team.

## Terms and conditions

- Guarantee only valid for products bought direct from Abcam or one of our authorized distributors