

## Product datasheet

# Anti-LIM Kinase 1 (phospho T508) antibody ab38508

★★★★☆ 1 Abreviews 8 References 画像数 3

### 製品の概要

製品名	Anti-LIM Kinase 1 (phospho T508) antibody
製品の詳細	Rabbit polyclonal to LIM Kinase 1 (phospho T508)
由来種	Rabbit
特異性	This antibody is specific for LIM Kinase only when phosphorylated at threonine 508. It recognizes both LIMK1 and LIMK2 from human, mouse, and rat.
アプリケーション	<b>適用あり:</b> WB, IHC-P, ELISA, ICC/IF
種交差性	<b>交差種:</b> Mouse, Rat, Human
免疫原	Synthetic phosphopeptide derived from Human LIM Kinase around the phosphorylation site of threonine 508.
ポジティブ・コントロール	IHC-P: Human breast carcinoma tissue slides. WB: COLO and MCF7 cell extracts.

### 製品の特性

製品の状態	Liquid
保存方法	Shipped at 4°C. Upon delivery aliquot and store at -20°C. Avoid freeze / thaw cycles.
バッファー	Preservative: 0.02% Sodium Azide Constituents: 50% Glycerol, PBS (without Mg <sup>2+</sup> and Ca <sup>2+</sup> ), 150mM Sodium chloride, pH 7.4
精製度	Immunogen affinity purified
特記事項 (精製)	The antibody was affinity purified from rabbit antiserum by affinity chromatography using epitope specific phosphopeptide. The antibody against non phosphopeptide was removed by chromatography using non phosphopeptide corresponding to the phosphorylation site.
ポリ/モノ	ポリクローナル
アイソタイプ	IgG

### アプリケーション

Our [Abpromise guarantee](#) covers the use of **ab38508** in the following tested applications.

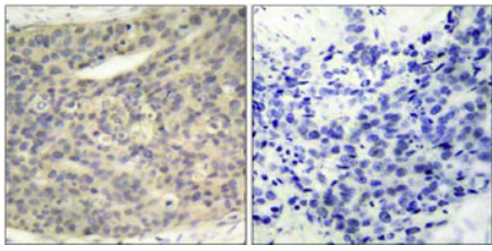
The application notes include recommended starting dilutions; optimal dilutions/concentrations should be determined by the end user.

アプリケーション	Abreviews	特記事項
WB	★★★★☆	1/500 - 1/1000. Detects a band of approximately 65 kDa (predicted molecular weight: 73 kDa).
IHC-P		1/50 - 1/100.
ELISA		1/10000.
ICC/IF		1/100. PubMed: 19208621

## ターゲット情報

機能	Protein kinase which regulates actin filament dynamics. Phosphorylates and inactivates the actin binding/depolymerizing factor cofilin, thereby stabilizing the actin cytoskeleton. Stimulates axonal outgrowth and may be involved in brain development. Isoform 3 has a dominant negative effect on actin cytoskeletal changes.
組織特異性	Highest expression in both adult and fetal nervous system. Detected ubiquitously throughout the different regions of adult brain, with highest levels in the cerebral cortex. Expressed to a lesser extent in heart and skeletal muscle.
関連疾患	Note=LIMK1 is located in the Williams-Beuren syndrome (WBS) critical region. WBS results from a hemizygous deletion of several genes on chromosome 7q11.23, thought to arise as a consequence of unequal crossing over between highly homologous low-copy repeat sequences flanking the deleted region.
配列類似性	Belongs to the protein kinase superfamily. TKL Ser/Thr protein kinase family. Contains 2 LIM zinc-binding domains. Contains 1 PDZ (DHR) domain. Contains 1 protein kinase domain.
翻訳後修飾	Autophosphorylated. Phosphorylated on serine and/or threonine residues by ROCK1. May be dephosphorylated and inactivated by SSH1. Ubiquitinated. 'Lys-48'-linked polyubiquitination by RNF6 leads to proteasomal degradation through the 26S proteasome, modulating LIMK1 levels in the growth cone and its effect on axonal outgrowth. Also polyubiquitinated by RLIM.
細胞内局在	Cytoplasm. Cell projection > growth cone.

## 画像

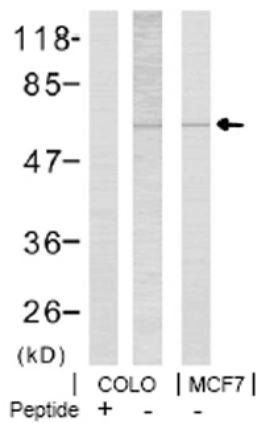


Immunohistochemistry (Formalin/PFA-fixed paraffin-embedded sections) - Anti-LIM Kinase 1 (phospho T508) antibody (ab38508)

ab38508 at a 1:50 dilution staining LIM Kinase in Human breast carcinoma tissue using Immunohistochemistry, Paraffin Embedded Tissue.

Left image : untreated.

Right image : treated with phosphopeptide.



Western blot - Anti-LIM Kinase 1 (phospho T508) antibody (ab38508)

**All lanes** : Anti-LIM Kinase 1 (phospho T508) antibody (ab38508) at 1/500 dilution

**Lane 1** : Extract of COLO cells + peptide.

**Lane 2** : Extract of COLO cells.

**Lane 3** : Extract of MCF7 cells.

Lysates/proteins at 30 µg per lane.

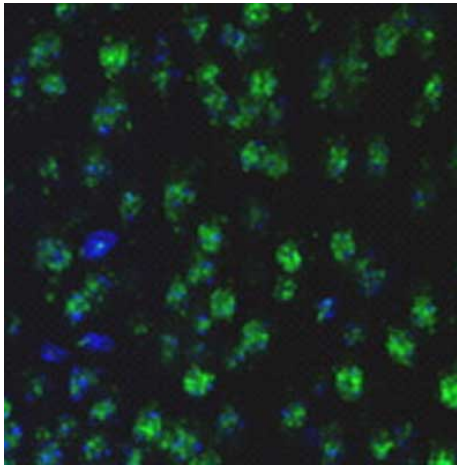
#### Secondary

**All lanes** : Alkaline Phosphatase AffiniPure Goat Anti-Rabbit IgG (H+L)

**Predicted band size:** 73 kDa

**Observed band size:** 65 kDa

Lanes can be loaded with 5-30µg of total protein. The arrow next to the image points to LIM Kinase (phospho T508).



ab38508 staining LIM Kinase 1 in mouse brain tissue by Immunohistochemistry (Formalin/PFA-fixed paraffin-embedded sections).

bdKO mice were anesthetized and transcardially perfused with PBS, followed by 4% paraformaldehyde (PFA) prior to brain dissection. Brains were then postfixed in 4% PFA for 2 days, embedded in paraffin and sectioned.

Immunohistochemistry (Formalin/PFA-fixed paraffin-embedded sections) - Anti-LIM Kinase 1 (phospho T508) antibody (ab38508)

Image from Mbkalled MH et al, Development. 2010 Jul;137(14):2365-74. Epub 2010 Jun 9, Fig 6. DOI: 10.1242/dev.047605.

**Please note:** All products are "FOR RESEARCH USE ONLY AND ARE NOT INTENDED FOR DIAGNOSTIC OR THERAPEUTIC USE"

### Our Abpromise to you: Quality guaranteed and expert technical support

- Replacement or refund for products not performing as stated on the datasheet
- Valid for 12 months from date of delivery
- Response to your inquiry within 24 hours
- We provide support in Chinese, English, French, German, Japanese and Spanish
- Extensive multi-media technical resources to help you
- We investigate all quality concerns to ensure our products perform to the highest standards

If the product does not perform as described on this datasheet, we will offer a refund or replacement. For full details of the Abpromise, please visit <http://www.abcam.co.jp/abpromise> or contact our technical team.

### Terms and conditions

- Guarantee only valid for products bought direct from Abcam or one of our authorized distributors