


Product datasheet

Anti-LILRB1 antibody ab77291

画像数 1

製品の概要

製品名	Anti-LILRB1 antibody
製品の詳細	Rabbit polyclonal to LILRB1
アプリケーション	適用あり: WB
種交差性	交差種: Human 交差が予測される動物種: Chimpanzee 
免疫原	Synthetic peptide conjugated to KLH derived from within residues 600 to the C-terminus of Human LILRB1. Immunogen の所有権に関して
ポジティブ・コントロール	Bone Marrow (Human) Tissue Lysate - adult normal tissue; Spleen (Human) Tissue Lysate - adult normal tissue; Thymus (Human) Tissue Lysate - adult normal tissue

製品の特性

製品の状態	Liquid
保存方法	Shipped at 4°C. Store at +4°C short term (1-2 weeks). Upon delivery aliquot. Store at -20°C or -80°C. Avoid freeze / thaw cycle.
バッファー	Preservative: 0.02% Sodium Azide Constituents: 1% BSA, PBS, pH 7.4
精製度	Immunogen affinity purified
ポリ/モノ	ポリクローナル
アイソタイプ	IgG

アプリケーション

Our [Abpromise guarantee](#) covers the use of **ab77291** in the following tested applications.

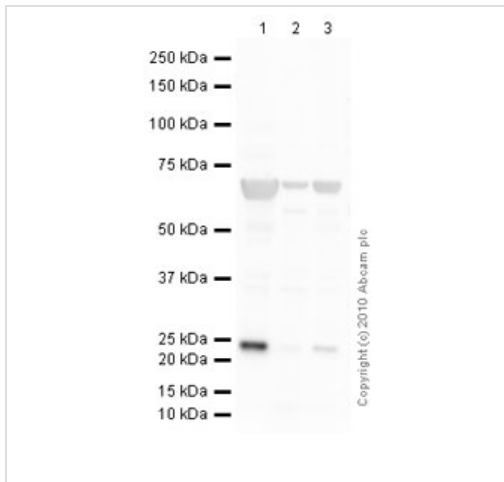
The application notes include recommended starting dilutions; optimal dilutions/concentrations should be determined by the end user.

アプリケーション	Abreviews	特記事項
WB		Use a concentration of 1 µg/ml. Detects a band of approximately 71 kDa (predicted molecular weight: 71 kDa).

ターゲット情報

機能	Receptor for class I MHC antigens. Recognizes a broad spectrum of HLA-A, HLA-B, HLA-C and HLA-G alleles. Receptor for H301/UL18, a human cytomegalovirus class I MHC homolog. Ligand binding results in inhibitory signals and down-regulation of the immune response. Engagement of LILRB1 present on natural killer cells or T-cells by class I MHC molecules protects the target cells from lysis. Interaction with HLA-B or HLA-E leads to inhibition of the signal triggered by FCER1A and inhibits serotonin release. Inhibits FCGR1A-mediated phosphorylation of cellular proteins and mobilization of intracellular calcium ions.
組織特異性	Expressed predominantly on B-cells and monocytes, and at lower levels on dendritic cells. Detected on a low percentage of T-cells and natural killer (NK) cells.
配列類似性	Contains 4 Ig-like C2-type (immunoglobulin-like) domains.
ドメイン	Contains 4 copies of a cytoplasmic motif that is referred to as the immunoreceptor tyrosine-based inhibitor motif (ITIM). This motif is involved in modulation of cellular responses. The phosphorylated ITIM motif can bind the SH2 domain of several SH2-containing phosphatases.
翻訳後修飾	Phosphorylated on tyrosine residues. Dephosphorylated by PTPN6.
細胞内局在	Membrane.

画像



Western blot - LILRB1 antibody (ab77291)

All lanes : Anti-LILRB1 antibody (ab77291) at 1 µg/ml

Lane 1 : Bone Marrow (Human) Tissue Lysate - adult normal tissue

Lane 2 : Human spleen tissue lysate - total protein (ab29699)

Lane 3 : Human thymus tissue lysate - total protein (ab30146)

Lysates/proteins at 10 µg per lane.

Secondary

Goat polyclonal Secondary Antibody to Rabbit IgG - H&L (HRP), pre-adsorbed at 1/5000 dilution

Developed using the ECL technique

Performed under reducing conditions.

Predicted band size : 71 kDa

Observed band size : 71 kDa

Additional bands at : 24 kDa. We are unsure as to the identity of these extra bands.

Exposure time : 5 minutes

Please note: All products are "FOR RESEARCH USE ONLY AND ARE NOT INTENDED FOR DIAGNOSTIC OR THERAPEUTIC USE"

Our Abpromise to you: Quality guaranteed and expert technical support

- Replacement or refund for products not performing as stated on the datasheet
- Valid for 12 months from date of delivery
- Response to your inquiry within 24 hours
- We provide support in Chinese, English, French, German, Japanese and Spanish
- Extensive multi-media technical resources to help you
- We investigate all quality concerns to ensure our products perform to the highest standards

If the product does not perform as described on this datasheet, we will offer a refund or replacement. For full details of the Abpromise, please visit <http://www.abcam.co.jp/abpromise> or contact our technical team.

Terms and conditions

- Guarantee only valid for products bought direct from Abcam or one of our authorized distributors