

Product datasheet

Anti-LATS1 +LATS2 antibody ab70565

★★★★☆ 2 Abreviews 5 References 画像数 3

製品の概要

製品名	Anti-LATS1 +LATS2 antibody
製品の詳細	Rabbit polyclonal to LATS1 +LATS2
由来種	Rabbit
アプリケーション	適用あり: IHC-P, WB, IP
種交差性	交差種: Mouse, Human 交差が予測される動物種: Rabbit, Horse, Chicken, Guinea pig, Cow, Dog, Turkey, Pig, Chimpanzee, Gorilla, Orangutan, Xenopus tropicalis, Platypus
免疫原	Synthetic peptide corresponding to Human LATS1 +LATS2 (N terminal).
ポジティブ・コントロール	Whole cell lysate from HeLa cells.

製品の特性

製品の状態	Liquid
保存方法	Shipped at 4°C. Upon delivery aliquot and store at -20°C. Avoid freeze / thaw cycles.
バッファー	Preservative: 0.09% Sodium Azide Constituents: 8mM PBS, 60mM Citrate, 150mM Tris, pH 7-8
精製度	Immunogen affinity purified
ポリ/モノ	ポリクローナル
アイソタイプ	IgG

アプリケーション

Our [Abpromise guarantee](#) covers the use of **ab70565** in the following tested applications.

The application notes include recommended starting dilutions; optimal dilutions/concentrations should be determined by the end user.

アプリケーション	Abreviews	特記事項
IHC-P		Use a concentration of 2 µg/ml. Perform heat mediated antigen retrieval before commencing with IHC staining protocol.

アプリケーション	Abreviews	特記事項
WB	★★★★☆	1/1000 - 1/5000. Detects a band of approximately 150 kDa (predicted molecular weight: 120 kDa).
IP		Use at 2-5 µg/mg of lysate.

ターゲット情報

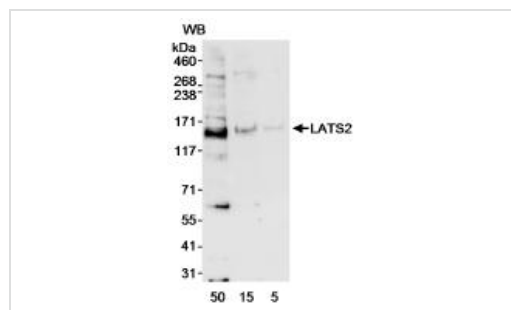
関連性

Negative regulator of YAP1 in the Hippo signaling pathway that plays a pivotal role in organ size control and tumor suppression by restricting proliferation and promoting apoptosis. The core of this pathway is composed of a kinase cascade wherein MST1/MST2, in complex with its regulatory protein SAV1, phosphorylates and activates LATS1/2 in complex with its regulatory protein MOB1, which in turn phosphorylates and inactivates YAP1 oncoprotein and WWTR1/TAZ. Phosphorylation of YAP1 by LATS2 inhibits its translocation into the nucleus to regulate cellular genes important for cell proliferation, cell death, and cell migration. Acts as a tumor suppressor which plays a critical role in centrosome duplication, maintenance of mitotic fidelity and genomic stability. Negatively regulates G1/S transition by down-regulating cyclin E/CDK2 kinase activity. Negative regulator of the androgen receptor.

細胞内局在

Cytoplasm; cytoskeleton; centrosome.

画像



Western blot - Anti-LATS1 +LATS2 antibody (ab70565)

All lanes : Anti-LATS1 +LATS2 antibody (ab70565) at 0.4 µg/ml

Lane 1 : HeLa cell whole lysate at 50 µg

Lane 2 : HeLa cell whole lysate at 15 µg

Lane 3 : HeLa cell whole lysate at 5 µg

Predicted band size: 120 kDa

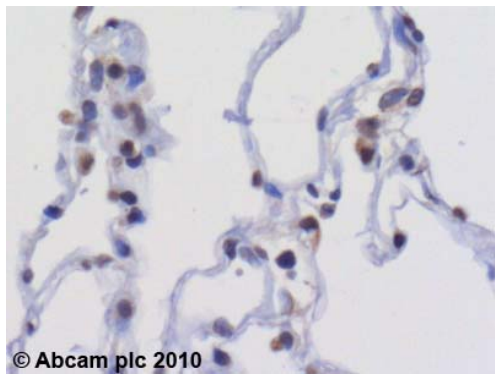
Observed band size: 150 kDa

Exposure time: 30 seconds



Immunoprecipitation - Anti-LATS1 +LATS2 antibody (ab70565)

Detection of human LATS2 by Immunoprecipitation in HeLa whole cell lysate (1 mg, 1/4 of immunoprecipitate loaded/lane), using ab70565 at 3 µg/mg of lysate. Subsequent blotting of immunoprecipitate for the detection of LATS2 was performed using 1 µg/ml of ab70565. Detection was by chemiluminescence.



Immunohistochemistry (Formalin/PFA-fixed paraffin-embedded sections) - Anti-LATS1 +LATS2 antibody (ab70565)

ab70565 (2µg/ml) staining LATS2 in human lung using an automated system (DAKO Autostainer Plus). Using this protocol there is strong nuclear staining in pneumocytes. Sections were rehydrated and antigen retrieved with the Dako 3-in-1 AR buffer citrate pH 6.0 in a DAKO PT Link. Slides were peroxidase blocked in 3% H₂O₂ in methanol for 10 minutes. They were then blocked with Dako Protein block for 10 minutes (containing casein 0.25% in PBS) then incubated with primary antibody for 20 minutes and detected with Dako Envision Flex amplification kit for 30 minutes. Colorimetric detection was completed with Diaminobenzidine for 5 minutes. Slides were counterstained with Haematoxylin and coverslipped under DePeX. Please note that, for manual staining, optimization of primary antibody concentration and incubation time is recommended. Signal amplification may be required.

Please note: All products are "FOR RESEARCH USE ONLY AND ARE NOT INTENDED FOR DIAGNOSTIC OR THERAPEUTIC USE"

Our Abpromise to you: Quality guaranteed and expert technical support

- Replacement or refund for products not performing as stated on the datasheet
- Valid for 12 months from date of delivery
- Response to your inquiry within 24 hours
- We provide support in Chinese, English, French, German, Japanese and Spanish
- Extensive multi-media technical resources to help you
- We investigate all quality concerns to ensure our products perform to the highest standards

If the product does not perform as described on this datasheet, we will offer a refund or replacement. For full details of the Abpromise, please visit <http://www.abcam.co.jp/abpromise> or contact our technical team.

Terms and conditions

- Guarantee only valid for products bought direct from Abcam or one of our authorized distributors