

## Product datasheet

# Anti-LAT antibody ab59229

画像数 1

### 製品の概要

製品名	Anti-LAT antibody
製品の詳細	Rabbit polyclonal to LAT
特異性	ab59229 detects endogenous levels of total LAT protein.
アプリケーション	適用あり: ELISA, WB
種交差性	交差種: Mouse, Human 交差が予測される動物種: Rat
免疫原	Synthetic non-phosphopeptide derived from human LAT around the phosphorylation site of tyrosine 191 (R-E-Y <sup>P</sup> -V-N).
ポジティブ・コントロール	NIH 3T3 cell extracts.

### 製品の特性

製品の状態	Liquid
保存方法	Shipped at 4°C. Store at -20°C. Stable for 12 months at -20°C.
バッファー	Preservative: 0.02% Sodium Azide Constituents: 50% Glycerol, PBS (without Mg <sup>2+</sup> and Ca <sup>2+</sup> ), 150mM Sodium chloride, pH 7.4
精製度	Immunogen affinity purified
特記事項 (精製)	ab59229 was affinity-purified from rabbit antiserum by affinity-chromatography using epitope-specific immunogen.
ポリ/モノ	ポリクローナル
アイソタイプ	IgG

### アプリケーション

Our [Abpromise guarantee](#) covers the use of **ab59229** in the following tested applications.

The application notes include recommended starting dilutions; optimal dilutions/concentrations should be determined by the end user.

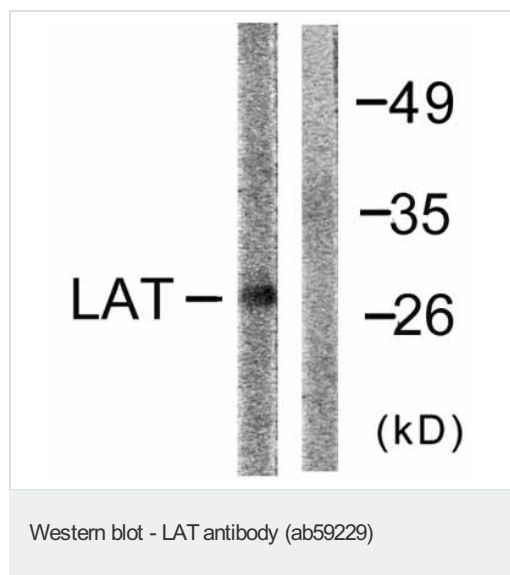
アプリケーション	Abreviews	特記事項
ELISA		1/5000.

アプリケーション	Abreviews	特記事項
WB		1/500 - 1/1000. Detects a band of approximately 28 kDa (predicted molecular weight: 28 kDa).

## ターゲット情報

<b>機能</b>	Required for TCR (T-cell antigen receptor)- and pre-TCR-mediated signaling, both in mature T-cells and during their development. Involved in FCGR3 (low affinity immunoglobulin gamma Fc region receptor III)-mediated signaling in natural killer cells and FCER1 (high affinity immunoglobulin epsilon receptor)-mediated signaling in mast cells. Couples activation of these receptors and their associated kinases with distal intracellular events such as mobilization of intracellular calcium stores, PKC activation, MAPK activation or cytoskeletal reorganization through the recruitment of PLCG1, GRB2, GRAP2, and other signaling molecules.
<b>組織特異性</b>	Expressed in thymus, T-cells, NK cells, mast cells and, at lower levels, in spleen. Present in T-cells but not B-cells (at protein level).
<b>翻訳後修飾</b>	Phosphorylated on tyrosines by ZAP-70 upon TCR activation, or by SYK upon other immunoreceptor activation; which leads to the recruitment of multiple signaling molecules. Is one of the most prominently tyrosine-phosphorylated proteins detected following TCR engagement. May be dephosphorylated by PTPRJ. Palmitoylation of Cys-26 and Cys-29 is required for raft targeting and efficient phosphorylation.
<b>細胞内局在</b>	Cell membrane. Present in lipid rafts.

## 画像



**All lanes** : Anti-LAT antibody (ab59229) at 1/500 dilution

**Lane 1** : NIH 3T3 cell extract

**Lane 2** : NIH 3T3 cell extract with immunising peptide

**Predicted band size** : 28 kDa

**Observed band size** : 28 kDa

**Please note:** All products are "FOR RESEARCH USE ONLY AND ARE NOT INTENDED FOR DIAGNOSTIC OR THERAPEUTIC USE"

## Our Abpromise to you: Quality guaranteed and expert technical support

- Replacement or refund for products not performing as stated on the datasheet
- Valid for 12 months from date of delivery

- Response to your inquiry within 24 hours
- We provide support in Chinese, English, French, German, Japanese and Spanish
- Extensive multi-media technical resources to help you
- We investigate all quality concerns to ensure our products perform to the highest standards

If the product does not perform as described on this datasheet, we will offer a refund or replacement. For full details of the Abpromise, please visit <http://www.abcam.co.jp/abpromise> or contact our technical team.

#### **Terms and conditions**

---

- Guarantee only valid for products bought direct from Abcam or one of our authorized distributors