

Product datasheet

Anti-LAMTOR1 antibody ab121157

画像数 3

製品の概要

製品名	Anti-LAMTOR1 antibody
製品の詳細	Rabbit polyclonal to LAMTOR1
由来種	Rabbit
アプリケーション	適用あり: ICC/IF, IHC-P, WB
種交差性	交差種: Mouse, Rat, Human
免疫原	Recombinant fragment, corresponding to amino acids 9-156 of Human LAMTOR1.
ポジティブ・コントロール	Human rectum tissue; RT4, U251 MG and Human liver lysates; A431 cells.

製品の特性

製品の状態	Liquid
保存方法	Shipped at 4°C. Store at -20°C.
精製度	Immunogen affinity purified
ポリ/モノ	ポリクローナル
アイソタイプ	IgG

アプリケーション

Our [Abpromise guarantee](#) covers the use of **ab121157** in the following tested applications.

The application notes include recommended starting dilutions; optimal dilutions/concentrations should be determined by the end user.

アプリケーション	Abreviews	特記事項
ICC/IF		Use a concentration of 1 - 4 µg/ml. Using PFA/Triton X-100 fixation.
IHC-P		1/200 - 1/500. Perform heat mediated antigen retrieval with citrate buffer pH 6 before commencing with IHC staining protocol.
WB		1/250 - 1/500.

ターゲット情報

機能

Regulator of the TOR pathway, a signaling cascade that promotes cell growth in response to growth factors, energy levels, and amino acids. As part of the Ragulator complex, recruits the Rag GTPases and the mTORC1 complex to lysosomes, a key step in activation of the TOR signaling cascade by amino acids. Directly responsible for anchoring the Ragulator complex to membranes. Also required for late endosomes/lysosomes biogenesis it may regulate both the recycling of receptors through endosomes and the MAPK signaling pathway through recruitment of some of its components to late endosomes. May be involved in cholesterol homeostasis regulating LDL uptake and cholesterol release from late endosomes/lysosomes. May also play a role in RHOA activation.

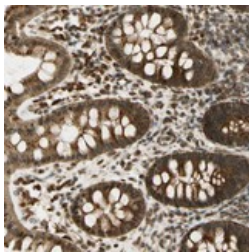
配列類似性

Belongs to the LAMTOR1 family.

細胞内局在

Late endosome membrane. Lysosome membrane. Cell membrane.

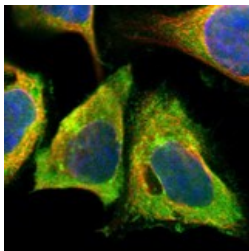
画像



ab121157 at 1/350 dilution staining
LAMTOR1 in Paraffin-embedded Human
Rectum tissue by Immunohistochemistry.

Note: strong cytoplasmic positivity, with a
granular pattern, in glandular cells.

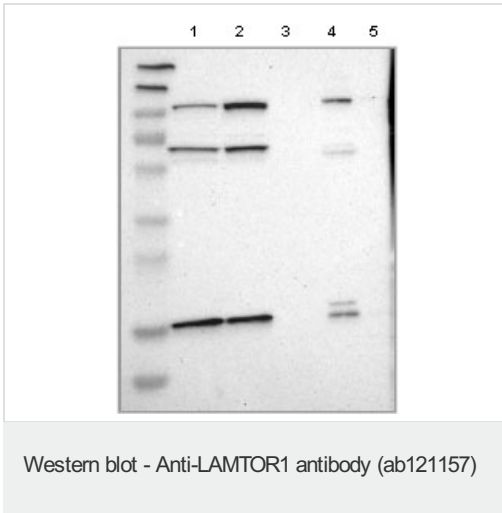
Immunohistochemistry (Formalin/PFA-fixed paraffin-
embedded sections) - Anti-LAMTOR1 antibody
(ab121157)



ab121157 at 4 µg/ml staining LAMTOR1
(green staining) in A431 cells, using
PFA/Triton X-100 fixation by
Immunofluorescence.

Note: positivity in plasma membrane & golgi
apparatus.

Immunocytochemistry/ Immunofluorescence - Anti-
LAMTOR1 antibody (ab121157)



All lanes : Anti-LAMTOR1 antibody
(ab121157) at 1/250 dilution

Lane 1 : RT4 lysate

Lane 2 : U251 MG
lysate

Lane 3 : Human plasma

Lane 4 : Human liver lysate

Lane 5 : Human tonsil lysate

Marker [kDa] 230, 130, 95, 72, 56, 36, 28, 17,
11

Please note: All products are "FOR RESEARCH USE ONLY AND ARE NOT INTENDED FOR DIAGNOSTIC OR THERAPEUTIC USE"

Our Abpromise to you: Quality guaranteed and expert technical support

- Replacement or refund for products not performing as stated on the datasheet
- Valid for 12 months from date of delivery
- Response to your inquiry within 24 hours
- We provide support in Chinese, English, French, German, Japanese and Spanish
- Extensive multi-media technical resources to help you
- We investigate all quality concerns to ensure our products perform to the highest standards

If the product does not perform as described on this datasheet, we will offer a refund or replacement. For full details of the Abpromise, please visit <http://www.abcam.co.jp/abpromise> or contact our technical team.

Terms and conditions

- Guarantee only valid for products bought direct from Abcam or one of our authorized distributors