

Product datasheet

L-Lactate Assay Kit (Colorimetric/Fluorometric) ab65330

9 References 画像数 6

製品の概要

<b>製品名</b>	L-Lactate Assay Kit (Colorimetric/Fluorometric)
<b>サンプルの種類</b>	Cell culture supernatant, Urine, Serum, Plasma, Other biological fluids, Cell Lysate, Tissue Lysate
<b>アッセイタイプ</b>	Quantitative
<b>検出感度</b>	> 0.001 mM
<b>検出範囲</b>	0.001 mM - 10 mM
<b>全工程の試験時間</b>	0h 40m
<b>種交差性</b>	交差種: Mammal
<b>製品の概要</b>	<p>L-Lactate Assay Kit (Colorimetric/Fluorometric) (ab65330) is an assay where lactate specifically reacts with a enzyme mix to generate a product, which interacts with lactate probe to produce color (570 nm) and fluorescence (at Ex/Em = 535/587 nm). The kit provides a convenient means for detecting L(+)-Lactate in biological samples such as in blood circulation, in cells, in culture mediums, in fermentation mediums, etc. There is no need for pretreatment or purification of samples.</p> <p>Visit our <a href="#">FAQs page</a> for tips and troubleshooting.</p> <p>Review our <a href="#">Metabolism Assay Guide</a> to learn about assays for metabolites, metabolic enzymes, mitochondrial function, and oxidative stress, and also about how to assay metabolic function in live cells using your plate reader.</p>
<b>特記事項</b>	L(+)-Lactate is the major stereo-isomer of lactate formed in human intermediary metabolism and is present in blood. D(-)-Lactate is also present but only at about 1-5% of the concentration of L(+)-Lactate.
<b>アプリケーション</b>	<b>適用あり:</b> Functional Studies

法規制情報

**医薬用外毒物**

製品の特性

## 保存方法

Store at -20°C. Please refer to protocols.

内容	ラベル	100 tests
L(+)-Lactate Standard (100 nmol/μl)	Yellow	1 x 100μl
Lactate Assay Buffer	WM	1 x 25ml
Lactate Enzyme Mix (lyophilized)	Green	1 vial
Lactate Probe (in DMSO, anhydrous)	Red	1 x 200μl

## 関連性

Lactate ( $\text{CH}_3\text{CH}(\text{OH})\text{COO}^-$ ) plays important roles in many biological processes. Abnormal high concentration of lactate has been related to disease states such as diabetes and lactate acidosis, etc. L(+)-Lactate is the major stereoisomer of lactate formed in human intermediary metabolism and is present in blood. The lactate to pyruvate ratio reflects the redox state of the cell and describes the balance between  $\text{NAD}^+$  and  $\text{NADH}$ , which is dependent on the interconversion of lactate and pyruvate via lactate dehydrogenase (LDH).

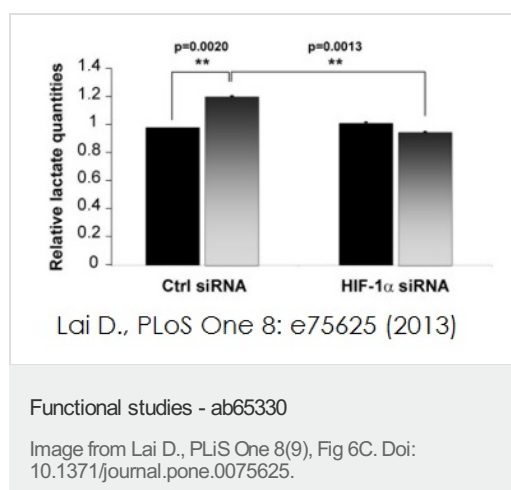
## アプリケーション

Our [Abpromise guarantee](#) covers the use of **ab65330** in the following tested applications.

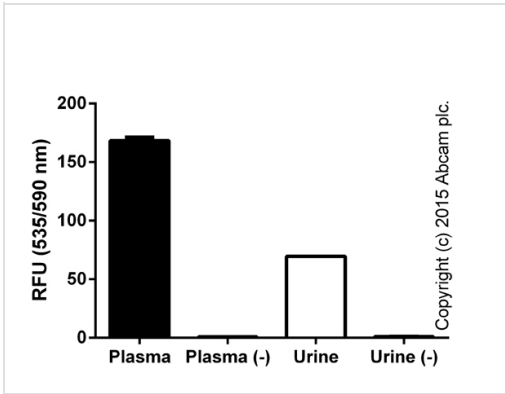
The application notes include recommended starting dilutions; optimal dilutions/concentrations should be determined by the end user.

アプリケーション	Abreviews	特記事項
Functional Studies		Use at an assay dependent dilution.

## 画像

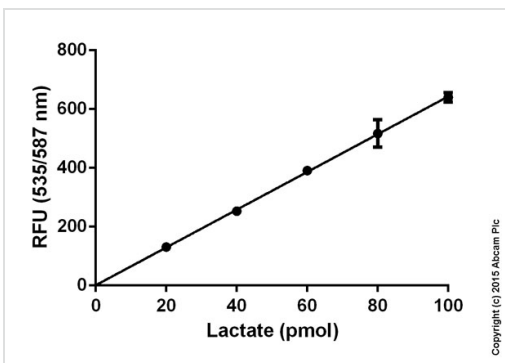


HaCaT cells are grown in normoxia for 3 days after infection and medium was tested to determine lactate concentration using L-Lactate assay kit (ab65330). HaCaT cells were infected with AdGFP-18E2 or AdGFP, transfected with Ctrl or HIF-1 $\alpha$  siRNA.



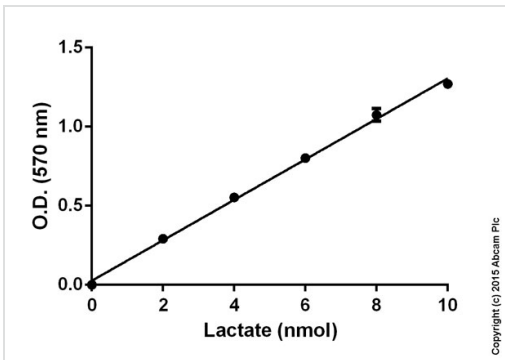
Relative signal (RFU) in unfiltered human plasma (dilution 1:200) and mouse urine (dilution 1:200), comparing L-lactate signals with background readings ((-); no enzyme) after 10 minutes of incubation (duplicates +/- SD).

Functional Assay: L-Lactate Assay Kit  
(Colorimetric/Fluorometric) (ab65330)



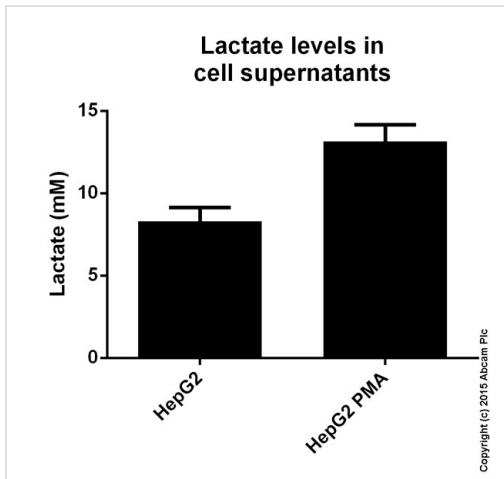
Standard curve: mean of duplicates (+/- SD) with background reads subtracted

Functional Studies - L-Lactate Assay Kit (ab65330)



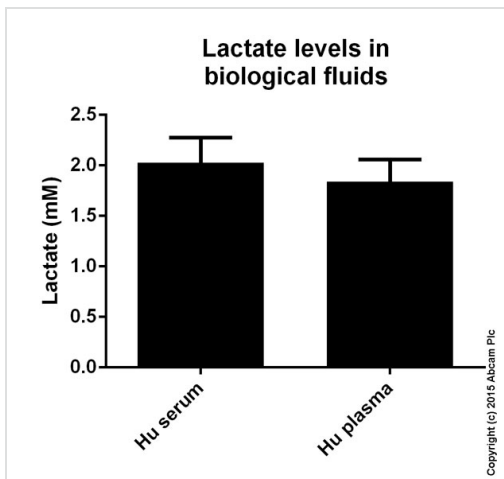
Standard curve: mean of duplicates (+/- SD) with background reads subtracted

Functional Studies - L-Lactate Assay Kit (ab65330)



Lactate measured in cell culture supernatants showing quantity ( $\mu\text{mol}$ ) per mL of tested sample. Samples were diluted 40-160 fold and measured fluorometrically.

Functional Studies - L-Lactate Assay Kit (ab65330)



Lactate measured in biological fluids showing quantity ( $\mu\text{mol}$ ) per mL of tested sample. Samples were diluted 10-40 fold and measured fluorometrically.

Functional Studies - L-Lactate Assay Kit (ab65330)

**Please note:** All products are "FOR RESEARCH USE ONLY AND ARE NOT INTENDED FOR DIAGNOSTIC OR THERAPEUTIC USE"

### Our Abpromise to you: Quality guaranteed and expert technical support

- Replacement or refund for products not performing as stated on the datasheet
- Valid for 12 months from date of delivery
- Response to your inquiry within 24 hours
- We provide support in Chinese, English, French, German, Japanese and Spanish
- Extensive multi-media technical resources to help you
- We investigate all quality concerns to ensure our products perform to the highest standards

If the product does not perform as described on this datasheet, we will offer a refund or replacement. For full details of the Abpromise, please visit <http://www.abcam.co.jp/abpromise> or contact our technical team.

### Terms and conditions

- Guarantee only valid for products bought direct from Abcam or one of our authorized distributors