

## Product datasheet

# Anti-Kv4.3 antibody ab123347

### 画像数 1

#### 製品の概要

製品名	Anti-Kv4.3 antibody
製品の詳細	Rabbit polyclonal to Kv4.3
由来種	Rabbit
アプリケーション	適用あり: WB
種交差性	交差種: Human
免疫原	Synthetic peptide conjugated to KLH, corresponding to a region within N terminal amino acids 12-41 of Human Kv4.3 (NP_751948.1, NP_004971.2).
ポジティブ・コントロール	CEM cell line lysates.

#### 製品の特性

製品の状態	Liquid
保存方法	Shipped at 4°C. Store at 4°C (up to 6 months). Store at -20°C long term.
バッファー	Preservative: 0.09% Sodium azide Constituent: 99% PBS
精製度	Immunogen affinity purified
特記事項(精製)	ab123347 is purified through a protein A column, followed by peptide affinity purification.
ポリ/モノ	ポリクローナル
アイソタイプ	IgG

#### アプリケーション

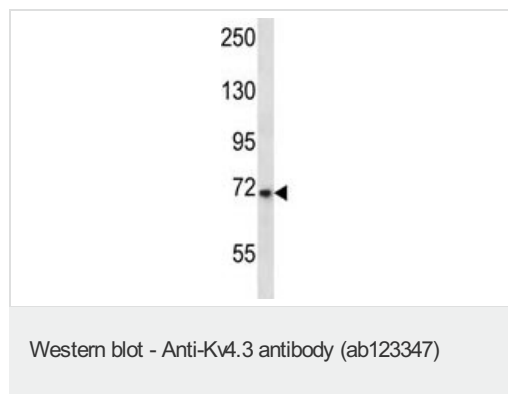
Our [Abpromise guarantee](#) covers the use of **ab123347** in the following tested applications.

The application notes include recommended starting dilutions; optimal dilutions/concentrations should be determined by the end user.

アプリケーション	Abreviews	特記事項
WB		1/100 - 1/500. Predicted molecular weight: 73 kDa.

機能	Pore-forming (alpha) subunit of voltage-gated rapidly inactivating A-type potassium channels. May contribute to I(To) current in heart and I(Sa) current in neurons. Channel properties are modulated by interactions with other alpha subunits and with regulatory subunits.
組織特異性	Highly expressed in heart and brain, in particular in cortex, cerebellum, amygdala and caudate nucleus. Detected at lower levels in liver, skeletal muscle, kidney and pancreas. Isoform 1 predominates in most tissues. Isoform 1 and isoform 2 are detected at similar levels in brain, skeletal muscle and pancreas.
配列類似性	Belongs to the potassium channel family. D (Shal) (TC 1.A.1.2) subfamily. Kv4.3/KCND3 subfamily.
ドメイン	The segment S4 is probably the voltage-sensor and is characterized by a series of positively charged amino acids at every third position.
細胞内局在	Membrane. Cell membrane > sarcolemma.

## 画像



Anti-Kv4.3 antibody (ab123347) at 1/100 dilution + CEM cell line lysates at 35 µg

**Predicted band size:** 73 kDa

**Please note:** All products are "FOR RESEARCH USE ONLY AND ARE NOT INTENDED FOR DIAGNOSTIC OR THERAPEUTIC USE"

## Our Abpromise to you: Quality guaranteed and expert technical support

- Replacement or refund for products not performing as stated on the datasheet
- Valid for 12 months from date of delivery
- Response to your inquiry within 24 hours
- We provide support in Chinese, English, French, German, Japanese and Spanish
- Extensive multi-media technical resources to help you
- We investigate all quality concerns to ensure our products perform to the highest standards

If the product does not perform as described on this datasheet, we will offer a refund or replacement. For full details of the Abpromise, please visit <http://www.abcam.co.jp/abpromise> or contact our technical team.

## Terms and conditions

- Guarantee only valid for products bought direct from Abcam or one of our authorized distributors