

Product datasheet

Anti-KRTAP27-1 antibody ab121678

画像数 1

製品の概要

| | |
|--------------|--|
| 製品名 | Anti-KRTAP27-1 antibody |
| 製品の詳細 | Rabbit polyclonal to KRTAP27-1 |
| 由来種 | Rabbit |
| アプリケーション | 適用あり: IHC-P |
| 種交差性 | 交差種: Human |
| 免疫原 | antigen sequence: PSHCHSLRS FHNAPPLSAI THGTNPITFE DRLCLPSSFH SRTCFLDNFQ ETCNETTSCQ MTNCEQDLFT DDSCVQSNCF PGVV, corresponding to N terminal amino acids 2-85 of Human KRTAP27-1. Run BLAST with ExPASy Run BLAST with NCBI |
| ポジティブ・コントロール | Human prostate tissue. |

製品の特性

| | |
|--------|---|
| 製品の状態 | Liquid |
| 保存方法 | Shipped at 4°C. Upon delivery aliquot and store at -20°C. Avoid freeze / thaw cycles. |
| バッファー | pH: 7.20 Preservative: 0.02% Sodium azide Constituents: 59% PBS, 40% Glycerol |
| 精製度 | Immunogen affinity purified |
| ポリ/モノ | ポリクローナル |
| アイソタイプ | IgG |

アプリケーション

Our [Abpromise guarantee](#) covers the use of **ab121678** in the following tested applications.

The application notes include recommended starting dilutions; optimal dilutions/concentrations should be determined by the end user.

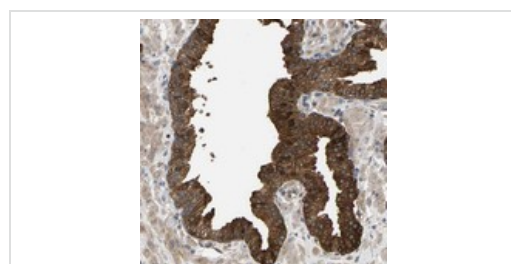
| アプリケーション | Abreviews | 特記事項 |
|----------|-----------|------|
|----------|-----------|------|

| アプリケーション | Abreviews | 特記事項 |
|----------|-----------|---|
| IHC-P | | 1/200 - 1/500. Perform heat mediated antigen retrieval with citrate buffer pH 6 before commencing with IHC staining protocol. |

ターゲット情報

| | |
|--------------|--|
| 機能 | In the hair cortex, hair keratin intermediate filaments are embedded in an interfilamentous matrix, consisting of hair keratin-associated proteins (KRTAP), which are essential for the formation of a rigid and resistant hair shaft through their extensive disulfide bond cross-linking with abundant cysteine residues of hair keratins. The matrix proteins include the high-sulfur and high-glycine-tyrosine keratins. |
| 配列類似性 | Belongs to the PMG family. |

画像



ab121678 at 1/200 dilution staining KRTAP27-1 in Paraffin-embedded Human prostate tissue by Immunohistochemistry.

Immunohistochemistry (Formalin/PFA-fixed paraffin-embedded sections) - Anti-KRTAP27-1 antibody (ab121678)

Please note: All products are "FOR RESEARCH USE ONLY AND ARE NOT INTENDED FOR DIAGNOSTIC OR THERAPEUTIC USE"

Our Abpromise to you: Quality guaranteed and expert technical support

- Replacement or refund for products not performing as stated on the datasheet
- Valid for 12 months from date of delivery
- Response to your inquiry within 24 hours
- We provide support in Chinese, English, French, German, Japanese and Spanish
- Extensive multi-media technical resources to help you
- We investigate all quality concerns to ensure our products perform to the highest standards

If the product does not perform as described on this datasheet, we will offer a refund or replacement. For full details of the Abpromise, please visit <http://www.abcam.co.jp/abpromise> or contact our technical team.

Terms and conditions

- Guarantee only valid for products bought direct from Abcam or one of our authorized distributors