

Product datasheet

Anti-KRT75 antibody ab94853

画像数 1

製品の概要

製品名	Anti-KRT75 antibody
製品の詳細	Rabbit polyclonal to KRT75
由来種	Rabbit
アプリケーション	適用あり: WB
種交差性	交差種: Human 交差が予測される動物種: Mouse, Rat, Cat, Pig
免疫原	Synthetic peptide corresponding to a region within N terminal amino acids 1-50 (MSRQSSITFQ SGSRRGFSTT SAITPAAGRS RFSSVSVARS AAGSGGLGRI) of Human KRT75 (NP_004684). Run BLAST with ExPASy Run BLAST with NCBI
ポジティブ・コントロール	HT1080 cell lysate

製品の特性

製品の状態	Liquid
保存方法	Shipped at 4°C. Upon delivery aliquot and store at -20°C. Avoid repeated freeze / thaw cycles.
バッファー	Preservative: None Constituents: 2% Sucrose, PBS
精製度	Immunogen affinity purified
ポリ/モノ	ポリクローナル
アイソタイプ	IgG

アプリケーション

Our [Abpromise guarantee](#) covers the use of **ab94853** in the following tested applications.

The application notes include recommended starting dilutions; optimal dilutions/concentrations should be determined by the end user.

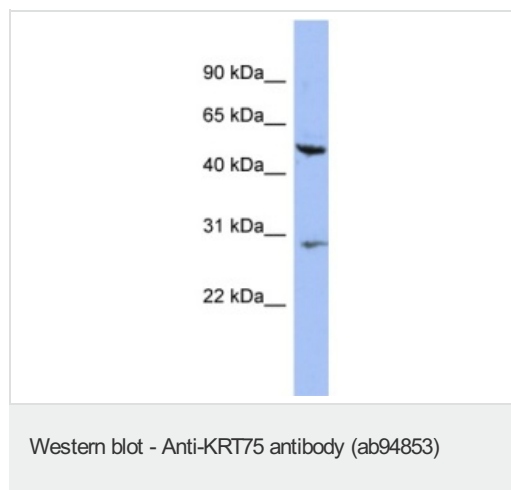
アプリケーション	Abreviews	特記事項
----------	-----------	------

アプリケーション	Abreviews	特記事項
WB		Use a concentration of 1 µg/ml. Predicted molecular weight: 60 kDa. Good results were obtained when blocked with 5% non-fat dry milk in 0.05% PBS-T.

ターゲット情報

機能	Plays a central role in hair and nail formation. Essential component of keratin intermediate filaments in the companion layer of the hair follicle.
組織特異性	Highly expressed in hair follicles from scalp. Specifically expressed in the of the hair companion layer follicle, a single layered band of flat and vertically oriented cells between the cuboidal outer root sheath (ORS) cells and the inner root sheath (IRS) that stretches from the lowermost bulb region to the isthmus of the follicle. Also expressed in medullated hairs. In nails, it is almost exclusively present in the nail bed (at protein level).
関連疾患	Defects in KRT75 may be a cause of loose anagen hair syndrome (LAHS) [MIM:600628]. In LAHS, anagen hairs are easily pulled from the scalp. The hair is relatively sparse and does not grow long. Hair of fair color and hair shafts of reduced caliber, and an early age of onset are features. Usually the hairs are not fragile and there are no areas of breakage.
配列類似性	Belongs to the intermediate filament family.

画像



Anti-KRT75 antibody (ab94853) at 1 µg/ml (in 5% skim milk / PBS buffer) + HT1080 cell lysate at 10 µg

Secondary

HRP conjugated anti-Rabbit IgG at 1/50000 dilution

Predicted band size: 60 kDa

Gel concentration: 12%

Please note: All products are "FOR RESEARCH USE ONLY AND ARE NOT INTENDED FOR DIAGNOSTIC OR THERAPEUTIC USE"

Our Abpromise to you: Quality guaranteed and expert technical support

- Replacement or refund for products not performing as stated on the datasheet
- Valid for 12 months from date of delivery

- Response to your inquiry within 24 hours
- We provide support in Chinese, English, French, German, Japanese and Spanish
- Extensive multi-media technical resources to help you
- We investigate all quality concerns to ensure our products perform to the highest standards

If the product does not perform as described on this datasheet, we will offer a refund or replacement. For full details of the Abpromise, please visit <http://www.abcam.co.jp/abpromise> or contact our technical team.

Terms and conditions

- Guarantee only valid for products bought direct from Abcam or one of our authorized distributors