

## Product datasheet

# Anti-KLHL3 antibody ab86390

1 References [画像数 1](#)

### 製品の概要

製品名	Anti-KLHL3 antibody
製品の詳細	Rabbit polyclonal to KLHL3
アプリケーション	<b>適用あり:</b> WB
種交差性	<b>交差種:</b> Human <b>交差が予測される動物種:</b> Mouse, Rat, Rabbit, Horse, Chicken, Guinea pig, Cow, Cat, Dog, Zebrafish
免疫原	Synthetic peptide from within residues: YVVGDDGSC NLASVEYYP VTDKWTLPT NMSTGRSYAG VAVIHKSL, corresponding to internal sequence amino acids 540-587 of Human KLHL3 (NP_059111) <a href="#">Run BLAST with ExPASy</a> <a href="#">Run BLAST with NCBI</a>
ポジティブ・コントロール	HepG2 cell lysate

### 製品の特性

製品の状態	Liquid
保存方法	Shipped at 4°C. Upon delivery aliquot and store at -20°C. Avoid repeated freeze / thaw cycles.
バッファー	Preservative: None Constituents: 2% Sucrose, PBS
精製度	Immunogen affinity purified
ポリ/モノ	ポリクローナル
アイソタイプ	IgG

### アプリケーション

Our [Abpromise guarantee](#) covers the use of **ab86390** in the following tested applications.

The application notes include recommended starting dilutions; optimal dilutions/concentrations should be determined by the end user.

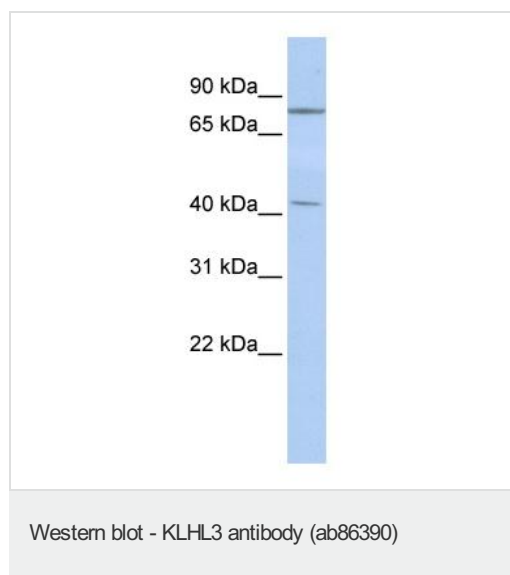
アプリケーション	Abreviews	特記事項

アプリケーション	Abreviews	特記事項
WB		Use a concentration of 1 µg/ml. Predicted molecular weight: 65 kDa. Good results were obtained when blocked with 5% non-fat dry milk in 0.05% PBS-T.

## ターゲット情報

<b>関連性</b>	KLHL3 protein contains a poxvirus and zinc finger domain at the N-terminus and six tandem repeats (kelch repeats) at the C-terminus. At the amino acid level, KLHL3 shares 77% similarity with <i>Drosophila</i> kelch and 89% similarity with Mayven (KLHL2), another human kelch homolog. At least three isoforms are produced and may be the result of alternative promoter usage. The KLHL3 maps within the smallest commonly deleted segment in myeloid leukemias characterized by a deletion of 5q; however, no inactivating mutations of KLHL3 could be detected in malignant myeloid disorders with loss of 5q.
<b>細胞内局在</b>	Cytoplasmic and cytoskeleton.

## 画像



Anti-KLHL3 antibody (ab86390) at 1 µg/ml +  
HepG2 cell lysate at 10 µg

### Secondary

HRP conjugated anti-Rabbit IgG at 1/50000  
dilution

**Predicted band size** : 65 kDa

**Observed band size** : 75 kDa

**Additional bands at** : 42 kDa. We are  
unsure as to the identity of these extra bands.

**Please note:** All products are "FOR RESEARCH USE ONLY AND ARE NOT INTENDED FOR DIAGNOSTIC OR THERAPEUTIC USE"

## Our Abpromise to you: Quality guaranteed and expert technical support

- Replacement or refund for products not performing as stated on the datasheet
- Valid for 12 months from date of delivery
- Response to your inquiry within 24 hours
- We provide support in Chinese, English, French, German, Japanese and Spanish
- Extensive multi-media technical resources to help you
- We investigate all quality concerns to ensure our products perform to the highest standards

If the product does not perform as described on this datasheet, we will offer a refund or replacement. For full details of the Abpromise, please visit <http://www.abcam.co.jp/abpromise> or contact our technical team.

## Terms and conditions

---

- Guarantee only valid for products bought direct from Abcam or one of our authorized distributors